

PRODUCT INFORMATION

Clone ID	Warning: Undefined variable \$hasAttributeValueDescription in C:\wwwroot\mirror\dimabio.com\wp-content\plugins\woocommerce-print-products\publicclass-woocommerce-print-products-public.php on line 2806 DM70
Target	2B4
Synonyms	CD244;2B4;SLAMF4;NKR2B4;NAIL;h2B4
Host Species	Rabbit
Description	Anti-2B4 antibody(DM70); Rabbit mAb
Delivery	3-4 weeks
Uniprot ID	Q9BZW8
IgG type	Rabbit IgG
Clonality	Monoclonal
Reactivity	Human
Applications	ELISA; Flow Cyt
Recommended Dilutions	ELISA 1:5000-10000; Flow Cyt 1:100
Purification	Purified from cell culture supernatant by affinity chromatography
Formulation & Reconstitution	Lyophilized from sterile PBS, pH 7.4. Normally 5% - 8% trehalose is added as protectants before lyophilization. Please see Certificate of Analysis for specific instructions of reconstitution.
Yefel Storage	Store at -20°C to -80°C for 12 months in lyophilized form. After reconstitution, if not intended for use within a month, aliquot and store at -80°C (Avoid repeated freezing and thawing). Lyophilized proteins are shipped at ambient temperature.
Background	This gene encodes a cell surface receptor expressed on natural killer (NK) cells (and some T cells) that mediate non-major histocompatibility complex (MHC) restricted killing. The interaction between NK-cell and target cells via this receptor is thought to modulate NK-cell cytolytic activity. Alternatively spliced transcript variants encoding different isoforms have been found for this gene.
Usage	Research use only
Conjugate	Unconjugated
DIMA Disclaimer	All DIMA recombinant antibodies are genuinely generated by DIMA Biotech. They are all under patent application. Any protein sequencing or reverse engineering attempt is prohibited. We are actively scrutinizing all patent application to ensure no IP infringement.

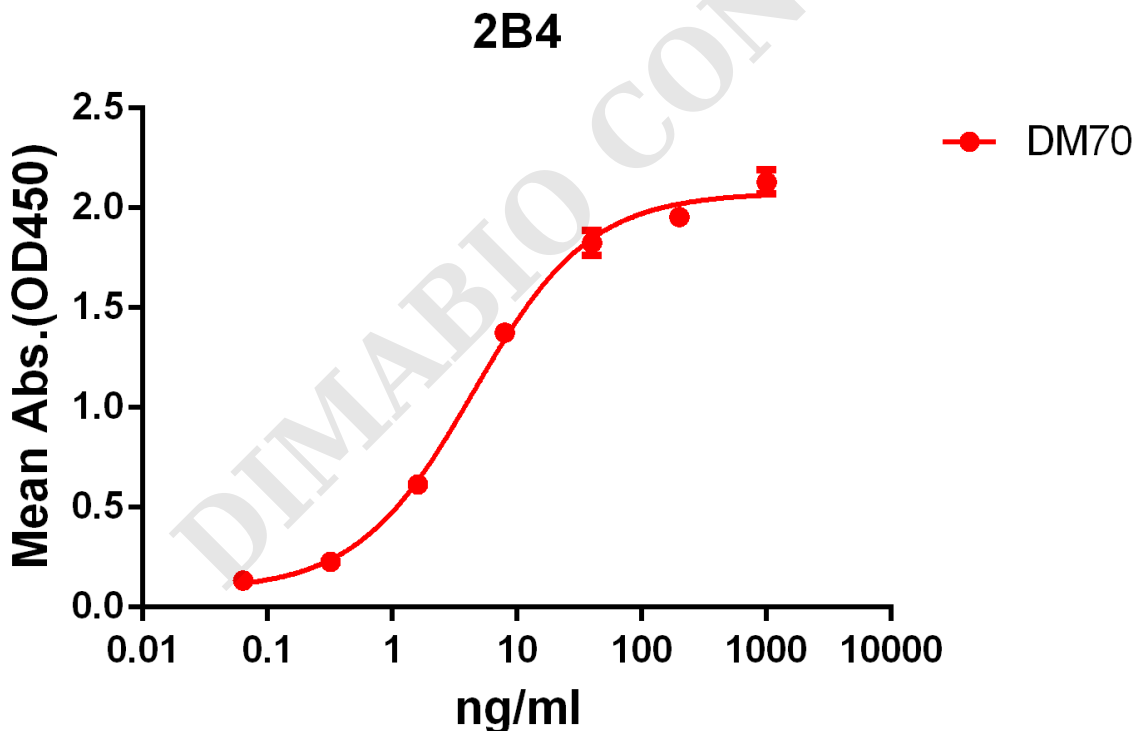


Figure 1. ELISA plate pre-coated by 2 µg/ml (100 µl/well) Human 2B4 protein, mFc-His tagged protein PME100010[getskuurl=] can bind Rabbit anti-2B4 monoclonal antibody (clone: DM70) in a linear range of 1-100 ng/ml.



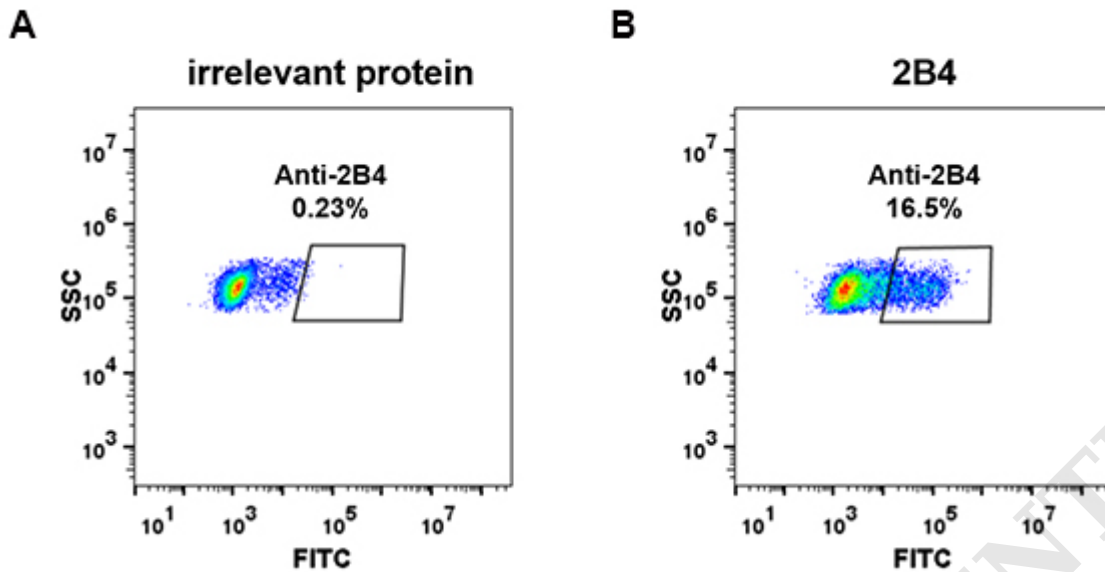


Figure 2. HEK293 cell line transfected with irrelevant protein (A) and human 2B4 (B) were surface stained with Rabbit anti-2B4 monoclonal antibody $1\mu\text{g/ml}$ (clone: DM70) followed by Alexa 488-conjugated anti-rabbit IgG secondary antibody.

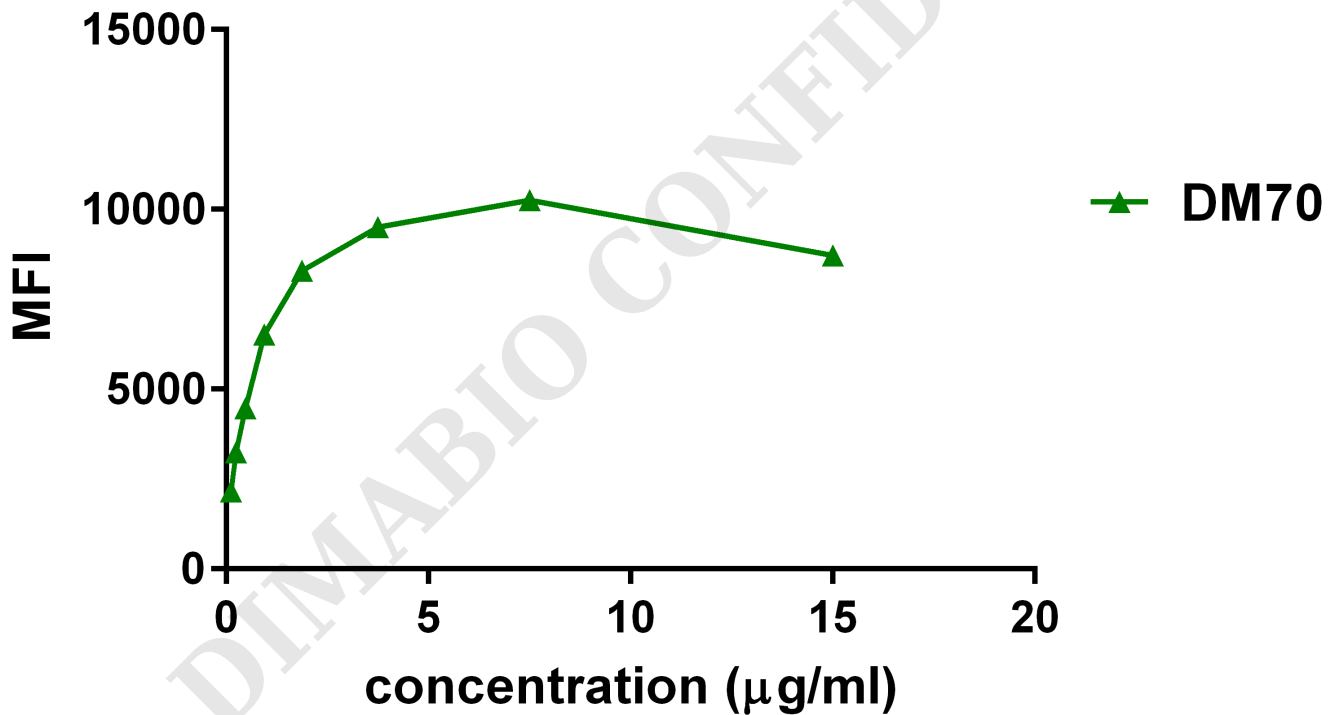


Figure 3. Flow cytometry data of serially titrated Rabbit anti-2B4 monoclonal antibody (clone: DM70) on THP-1 cells. The Y-axis represents the mean fluorescence intensity (MFI) while the X-axis represents the concentration of IgG used.



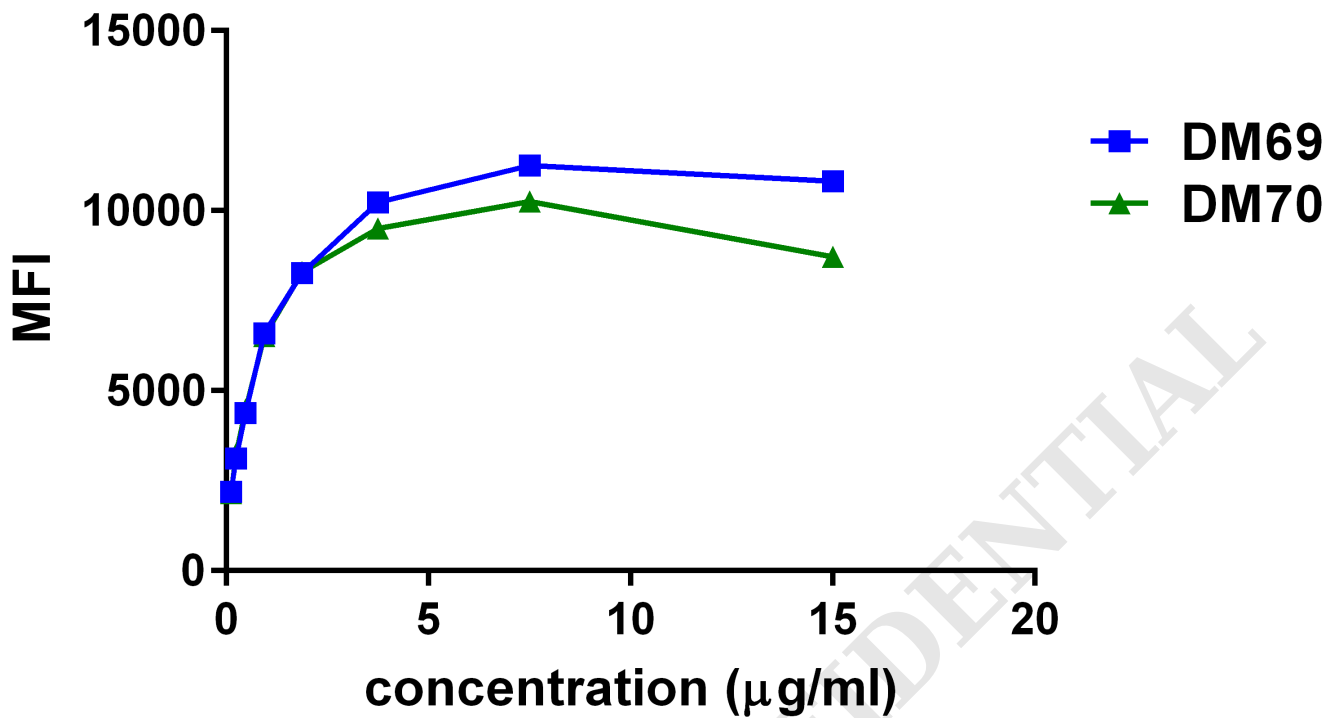


Figure 4. Affinity ranking of different Rabbit anti-2B4 mAb clones by titration of different concentration onto THP-1 cells. The Y-axis represents the mean fluorescence intensity (MFI) while the X-axis represents the concentration of IgG used.

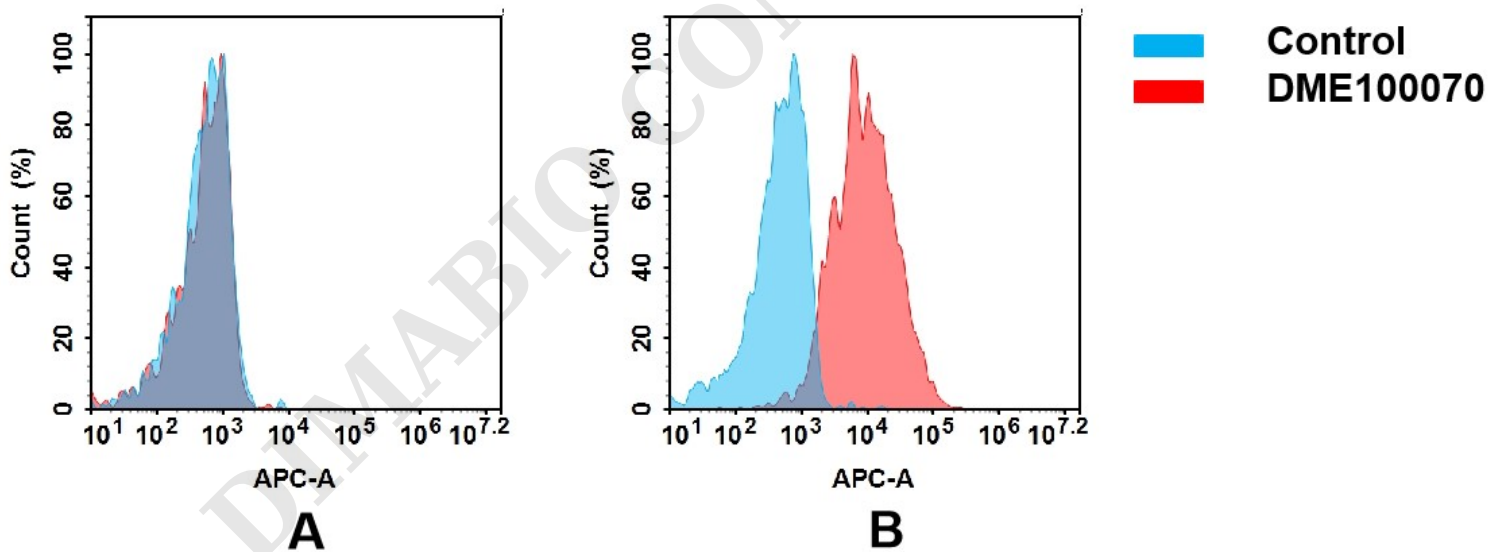


Figure 5. Flow cytometry analysis of antigen binding of rabbit anti-human 2B4 mAb(DME100070).

(A) DME100070 does not bind to CHO-S cells that do not express 2B4.

(B) A clear peak shift of DME100070 was seen compared to the control when incubated with 2B4-expressing THP-1 cells, indicating strong binding of DME100070 to 2B4. Antibodies were incubated at 5 µg/mL.

