

**PRODUCT INFORMATION**

<b>Common Name</b>	IMGC 936,IMGC-936,IMGC936
<b>Synonyms</b>	CORD9;MCMP;MDC9;Mltng
<b>Applications</b>	ELISA, Flow Cyt
<b>Recommended Dilutions</b>	ELISA 1:5000-10000, Flow Cyt 1:100
<b>Formulation &amp; Reconstitution</b>	Lyophilized from sterile PBS, pH 7.4. Normally 5% - 8% trehalose is added as protectants before lyophilization. Please see Certificate of Analysis for specific instructions of reconstitution.
<b>Host Species</b>	Humanized
<b>IgG type</b>	IgG1(K97R,M135Y,S137T,T139E,S325C)
<b>Reactivity</b>	Human
<b>Target</b>	ADAM9
<b>Uniprot ID</b>	Q13443
<b>Description</b>	Anti-ADAM9(izeltabart biosimilar) mAb
<b>Delivery</b>	In Stock
<b>Storage &amp; Shipping</b>	Store at -20°C to -80°C for 12 months in lyophilized form. After reconstitution, if not intended for use within a month, aliquot and store at -80°C (Avoid repeated freezing and thawing). Lyophilized antibodies are shipped at ambient temperature.
<b>Background</b>	Research grade biosimilar. Not for use in therapeutic or diagnostic procedures for humans or animals.
<b>Usage</b>	Research use only
<b>Conjugate</b>	Unconjugated
<b>DIMA Disclaimer</b>	All DIMA recombinant antibodies are genuinely generated by DIMA Biotech. They are all under patent application. Any protein sequencing or reverse engineering attempt is prohibited. We are actively scrutinizing all patent application to ensure no IP infringement.



## Anti-ADAM9(izeltabart biosimilar) mAb ELISA

0.2  $\mu$ g of Human ADAM9, His tagged protein per well

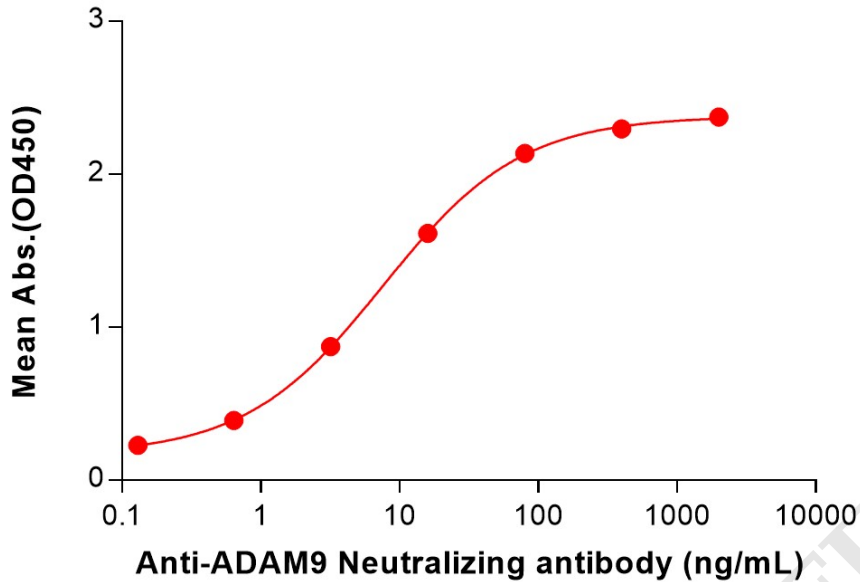


Figure 1. ELISA plate pre-coated by 2  $\mu$ g/mL (100  $\mu$ L/well) Human ADAM9 Protein, His Tag (PME100901) can bind Anti-ADAM9(izeltabart biosimilar) mAb (BME100230) in a linear range of 0.64-80 ng/mL.

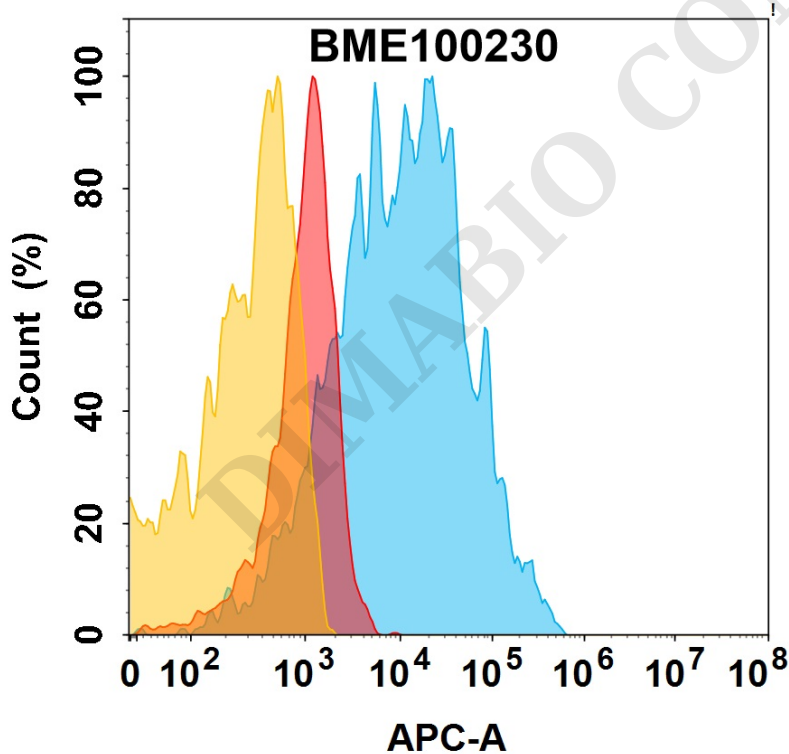


Figure 2. ADAM9 protein is highly expressed on the surface of Expi293 cell membrane. Flow cytometry analysis with 1  $\mu$ g/mL Anti-ADAM9(izeltabart biosimilar) mAb (BME100230) on Expi293 cells transfected with Human ADAM9 protein (Blue histogram) or Expi293 transfected with irrelevant protein (Red histogram).

