

PRODUCT INFORMATION

Common Name	Warning: Undefined variable \$hasAttributeValueDescription in C:\wwwroot\mirror.dimabio.com\wp-content\plugins\woocommerce-print-products\publicclass-woocommerce-print-products-public.php on line 2806 2857916, GSK2857916, J6M0, J6M0-mcMMAF, Unconjugated mAb
Synonyms	Warning: Undefined variable \$hasAttributeValueDescription in C:\wwwroot\mirror.dimabio.com\wp-content\plugins\woocommerce-print-products\publicclass-woocommerce-print-products-public.php on line 2806 CD269, TNFRSF17, BCM, BCMA
Conjugate	Unconjugated
Applications	ELISA; Flow Cyt
Recommended Dilutions	ELISA 1:5000-10000; Flow Cyt 1:100
Formulation & Reconstitution	Lyophilized from sterile PBS, pH 7.4. Normally 5% - 8% trehalose is added as protectants before lyophilization. Please see Certificate of Analysis for specific instructions of reconstitution.
Host Species	Humanized
IgG type	Human IgG1 - kappa
Reactivity	Human
Target	BCMA
Uniprot ID	Q02223
Description	Anti-BCMA (belantamab biosimilar) mAb
Delivery	In Stock
Yefei Storage	Store at -20°C to -80°C for 12 months in lyophilized form. After reconstitution, if not intended for use within a month, aliquot and store at -80°C (Avoid repeated freezing and thawing). Lyophilized proteins are shipped at ambient temperature.
Background	Research grade biosimilar. Not for use in therapeutic or diagnostic procedures for humans or animals. Our unconjugated biosimilar monoclonal antibodies (mAbs) are based on the sequences outlined in relevant patents or scientific publications. These antibodies are in their native, unconjugated form, meaning they do not contain any payload or therapeutic agent attached. They are designed for use in research and development, and their performance has been tested as standalone molecules through comprehensive QC tests.
Usage	Research use only

Anti-BCMA (belantamab biosimilar) mAb ELISA

0.2 µg of Human BCMA, mFc tagged protein per well

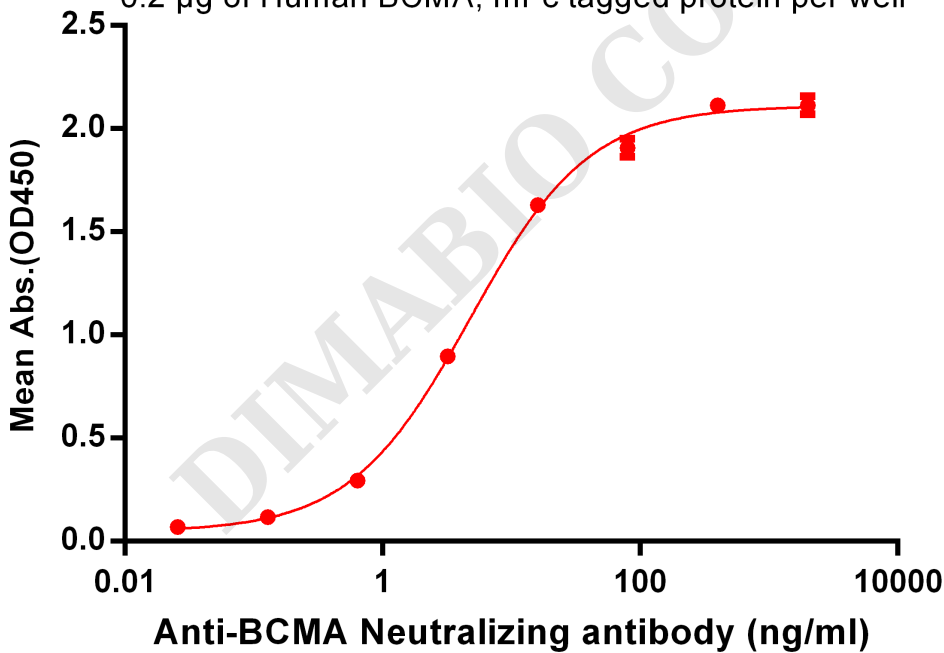


Figure 1. ELISA plate pre-coated by 2 µg/ml (100 µl/well) Human BCMA, mFc tagged protein PME100035 can bind Anti-BCMA Neutralizing antibody in a linear range of 0.64-80.0 ng/ml



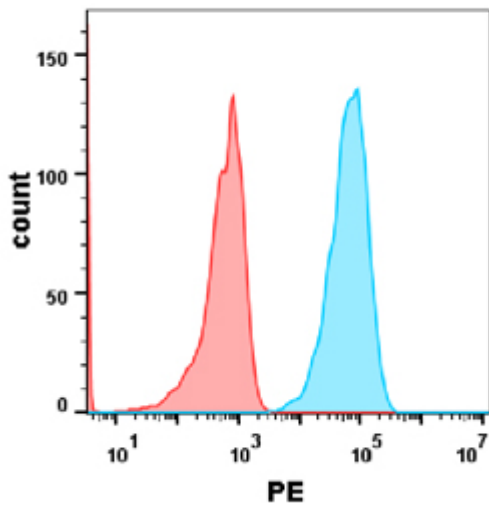


Figure 2. Flow cytometry analysis with Anti-BCMA mAb 1 μ g/ml(belantamab) on K562 cells (Red histogram) or human BCMA positive K562 cells (Blue histogram).Human BCMA positive K562 cells were generated by human BCMA lentivirally transduced into K562 cell line and selected for monoclonal

DIMABIO CONFIDENTIAL

