

PRODUCT INFORMATION

Common Name	Warning: Undefined variable \$hasAttributeValueDescription in C:\wwwroot\mirror.dimabio.com\wp-content\plugins\woocommerce-print-products\public\class-woocommerce-print-products-public.php on line 2806 BlueBird HuC11D5.3 (bb2121)
Synonyms	Warning: Undefined variable \$hasAttributeValueDescription in C:\wwwroot\mirror.dimabio.com\wp-content\plugins\woocommerce-print-products\public\class-woocommerce-print-products-public.php on line 2806 CD269;TNFRSF17;BCM;BCMA
Conjugate	Unconjugated
Applications	ELISA; Flow Cyt
Recommended Dilutions	ELISA 1:5000-10000; Flow Cyt 1:100
Formulation & Reconstitution	Lyophilized from sterile PBS, pH 7.4. Normally 5% - 8% trehalose is added as protectants before lyophilization. Please see Certificate of Analysis for specific instructions of reconstitution.
Host Species	Humanized
IgG type	Human IgG1 - kappa
Reactivity	Human
Target	BCMA
Uniprot ID	Q02223
Description	Anti-BCMA (biosimilar) mAb
Delivery	In Stock
Yefei_Storage	Store at -20°C to -80°C for 12 months in lyophilized form. After reconstitution, if not intended for use within a month, aliquot and store at -80°C (Avoid repeated freezing and thawing). Lyophilized proteins are shipped at ambient temperature.
Background	Research grade biosimilar. Not for use in therapeutic or diagnostic procedures for humans or animals.
Usage	Research use only

Anti-BCMA mAb ELISA

0.2 µg of Human BCMA, hFc-His Tagged protein per well

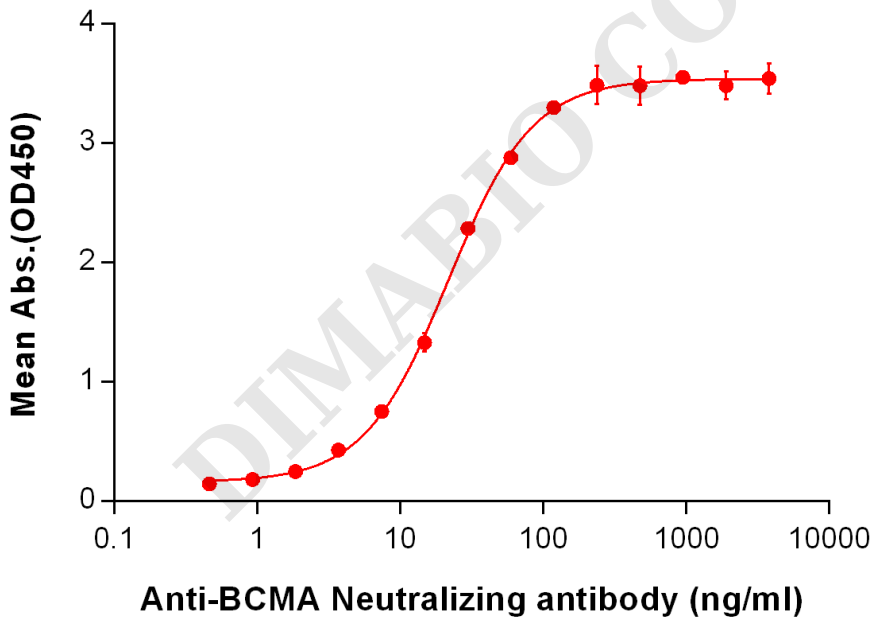


Figure 1. ELISA plate pre-coated by 2µg/ml (100µl/well) Human BCMA, hFc-His Tag PME100001 can bind Anti-BCMA (Neutralizing antibody clone huC11D5.3) in a linear range of 3.71-22.29 ng/ml.



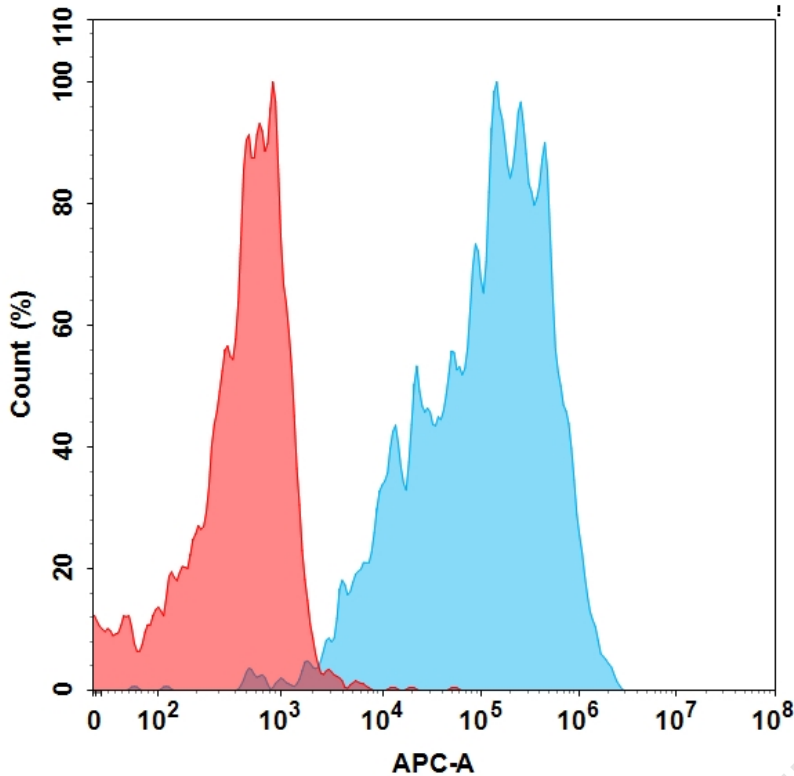


Figure 2. Flow cytometry analysis with 15 $\mu\text{g}/\text{mL}$ Anti-BCMA mAb (BME100016) on HEK293 cells transfected with Human BCMA protein (Blue histogram) or HEK293 transfected with irrelevant protein (Red histogram).

Anti-BCMA (biosimilar) mAb ELISA

0.2 μg of Human BCMA, mFc tagged protein per well

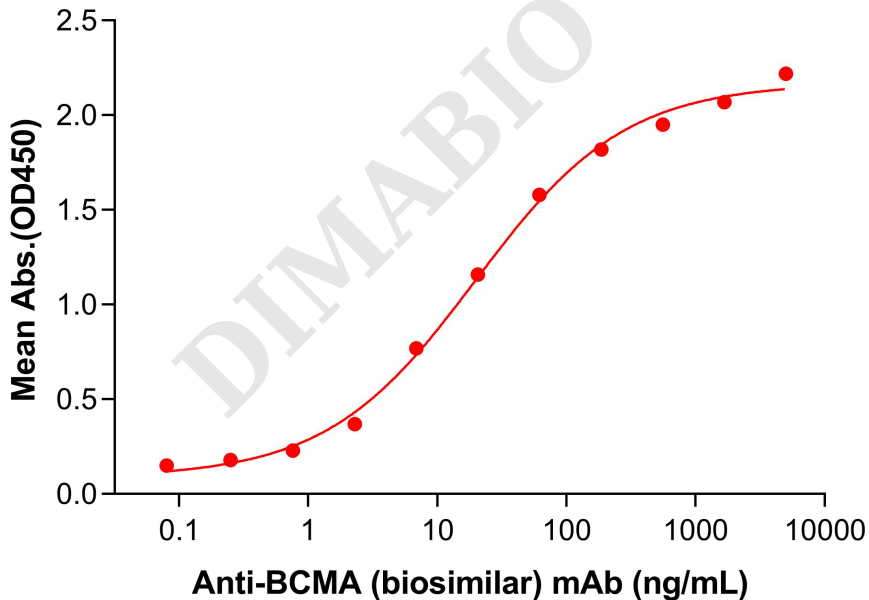


Figure 3. ELISA plate pre-coated by 2 $\mu\text{g}/\text{mL}$ (100 $\mu\text{L}/\text{well}$) Human BCMA Protein, mFc Tag (PME100035) can bind Anti-BCMA (biosimilar) mAb (BME100016) in a linear range of 2.29–61.73 ng/mL.

