

PRODUCT INFORMATION

Common Name	Warning: Undefined variable \$hasAttributeValueDescription in C:\wwwroot\mirror\dimabio.com\wp-content\plugins\woocommerce-print-products\publicclass\woocommerce-print-products-public.php on line 2806 J5004
Conjugate	Unconjugated
Synonyms	BTLA;CD272
Applications	ELISA; Flow Cyt
Recommended Dilutions	ELISA 1:5000-10000; Flow Cyt 1:100
Formulation & Reconstitution	Lyophilized from sterile PBS, pH 7.4. Normally 5 % - 8% trehalose is added as protectants before lyophilization. Please see Certificate of Analysis for specific instructions of reconstitution.
Host Species	Chimeric
IgG type	Human IgG4 - Kappa
Reactivity	Human
Target	BTLA
Uniprot ID	Q7Z6A9
Description	Anti-BTLA (icatolimab biosimilar)mAb
Delivery	In Stock
Yefei Storage	Store at -20°C to -80°C for 12 months in lyophilized form. After reconstitution, if not intended for use within a month, aliquot and store at -80°C (Avoid repeated freezing and thawing). Lyophilized proteins are shipped at ambient temperature.
Background	Research grade biosimilar. Not for use in therapeutic or diagnostic procedures for humans or animals.
Usage	Research use only

Anti-BTLA (icatolimab biosimilar) mAb ELISA

0.1 µg of Human BTLA, His Tagged protein per well

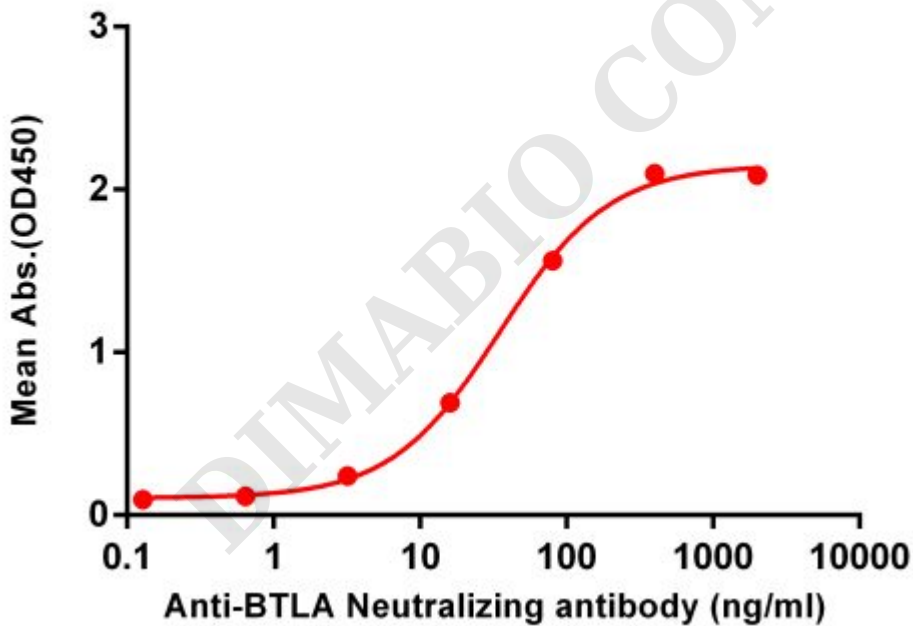


Figure 1. ELISA plate pre-coated by 1 µg/ml (100 µl/well) Human BTLA , His tagged protein ([getskuurl sku="PME100524"]) can bind Anti-BTLA Neutralizing antibody (BME100054) in a linear range of 1-100 ng/ml.



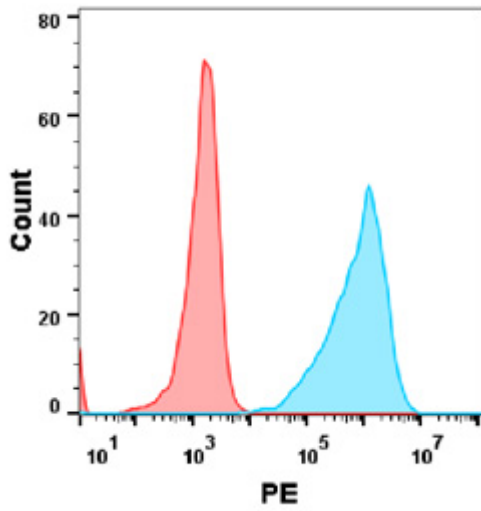


Figure 2. Flow cytometry analysis with Anti-BTLA mAb 1 μ g/ml (icatolimab) on HEK293 cells transfected with human BTLA (Blue histogram) or HEK293 transfected with irrelevant protein (Red histogram).

DIMABIO CONFIDENTIAL

