

PRODUCT INFORMATION

| | |
|---|---|
| Clone ID | 4E1 |
| Target | Canine PD-1 |
| Synonyms | PD1; PDCD1; CD279; SLEB2; hPD-1; hPD-l; hSLE1 |
| Host Species | Rabbit |
| Description | Anti-Canine PD-1 antibody(4E1), Rabbit mAb |
| Delivery | In Stock |
| Uniprot ID | NP_001301026.1 |
| IgG type | Rabbit IgG |
| Clonality | Monoclonal |
| Reactivity | Canine |
| Applications | ELISA |
| Recommended Dilutions | ELISA 1/5000-10000 |
| Purification | Purified from cell culture supernatant by affinity chromatography |
| Formulation & Reconstitution | Lyophilized from sterile PBS, pH 7.4. Normally 5 % - 8% trehalose is added as protectants before lyophilization. Please see Certificate of Analysis for specific instructions of reconstitution. |
| Storage & Shipping | Store at -20°C to -80°C for 12 months in lyophilized form. After reconstitution, if not intended for use within a month, aliquot and store at -80°C (Avoid repeated freezing and thawing). Lyophilized proteins are shipped at ambient temperature. |
| Background | Programmed cell death protein 1 (PDCD1) is an immune-inhibitory receptor expressed in activated T cells; it is involved in the regulation of T-cell functions, including those of effector CD8+ T cells. In addition, this protein can also promote the differentiation of CD4+ T cells into T regulatory cells. PDCD1 is expressed in many types of tumors including melanomas, and has demonstrated to play a role in anti-tumor immunity. Moreover, this protein has been shown to be involved in safeguarding against autoimmunity, however, it can also contribute to the inhibition of effective anti-tumor and anti-microbial immunity. [provided by RefSeq, Aug 2020] |
| Usage | Research use only |
| Conjugate | Unconjugated |
| DIMA Disclaimer | All DIMA recombinant antibodies are genuinely generated by DIMA Biotech. They are all under patent application. Any protein sequencing or reverse engineering attempt is prohibited. We are actively scrutinizing all patent application to ensure no IP infringement. |



Canine PD-1 competitive ELISA

0.1 μ g of Canine PD-1, His Tagged protein per well

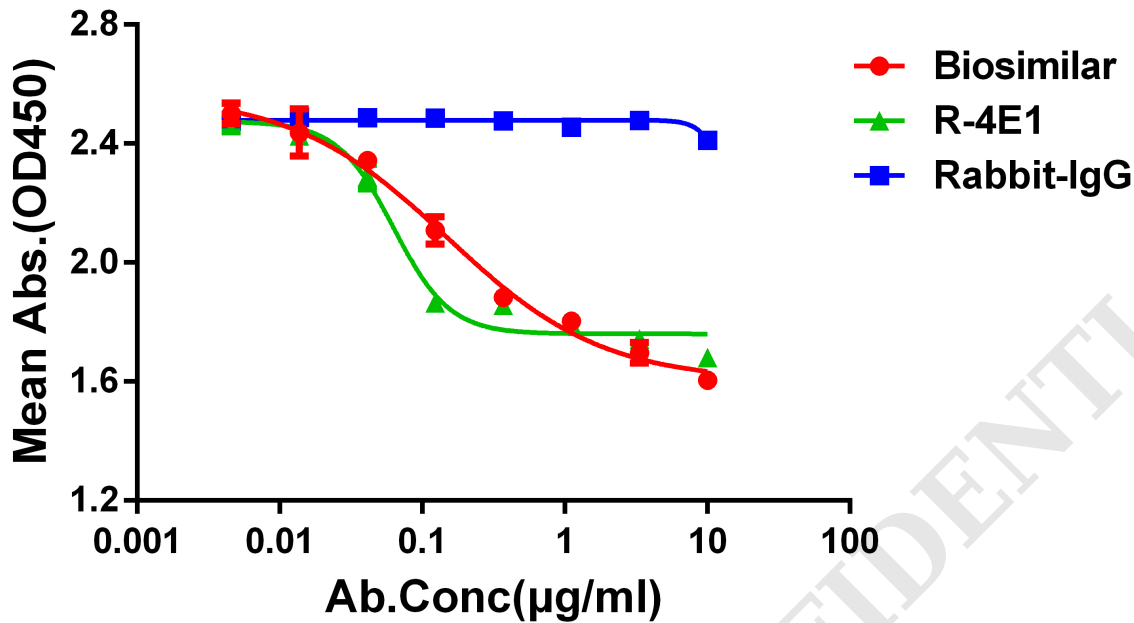


Figure 1. Elisa plates were pre-coated with His Tagged Canine PD-1 protein (0.1 μ g/per well). 0.2 μ g of Canine PDL1, hFc Tagged protein and serial dilutions of anti-Canine PD-1 monoclonal antibody were added, and Goat anti Human IgG(Horseradish Peroxidase Conjugate) was used as the secondary antibody. From the above data, the biosimilar(Red) and clone 4E1(Green) have good competitive activity, and Rabbit IgG(Blue) was used as the Isotype Control.

