

PRODUCT INFORMATION

Common Name	4F12
Synonyms	PD1, PDCD1, CD279, SLEB2, hPD-1, hPD-l, hSLE1
Applications	ELISA, Flow Cyt
Recommended Dilutions	ELISA 1:5000-10000, Flow Cyt 1:100
Formulation & Reconstitution	Lyophilized from sterile PBS, pH 7.4. Normally 5% - 8% trehalose is added as protectants before lyophilization. Please see Certificate of Analysis for specific instructions of reconstitution.
Host Species	Chimeric Rabbit
IgG type	IgG
Reactivity	Canine
Target	PD-1
Uniprot ID	NP_001301026.1
Description	Anti-Canine PD-1(INTERVET 4F12) mAb
Delivery	In Stock
Storage & Shipping	Store at -20°C to -80°C for 12 months in lyophilized form. After reconstitution, if not intended for use within a month, aliquot and store at -80°C (Avoid repeated freezing and thawing). Lyophilized antibodies are shipped at ambient temperature.
Background	Research grade biosimilar. Not for use in therapeutic or diagnostic procedures for humans or animals.
Usage	Research use only
Conjugate	Unconjugated
DIMA Disclaimer	All DIMA recombinant antibodies are genuinely generated by DIMA Biotech. They are all under patent application. Any protein sequencing or reverse engineering attempt is prohibited. We are actively scrutinizing all patent application to ensure no IP infringement.



Anti-Canine PD-1(INTERVET 4F12) mAb ELISA

0.2 μ g of Canine PD-1, His tagged protein per well

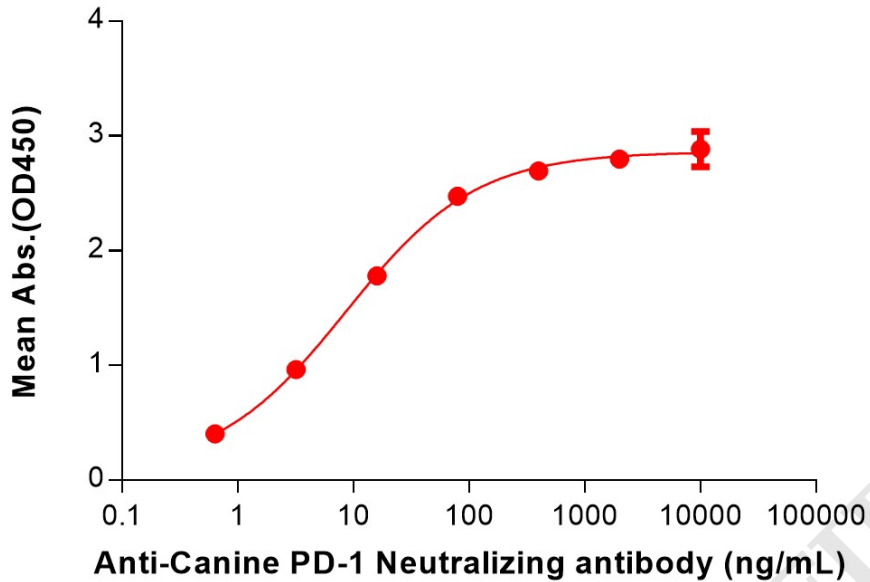


Figure 1. ELISA plate pre-coated by 2 μ g/mL (100 μ L/well) Canine PD-1 Protein, His Tag (PME-D100005) can bind Anti-Canine PD-1(INTERVET 4F12) mAb (BME100202) in a linear range of 0.64-80 ng/mL.

Anti-Canine PD-1(INTERVET 4F12) mAb ELISA

0.2 μ g of Canine PD-1, hFc tagged protein per well

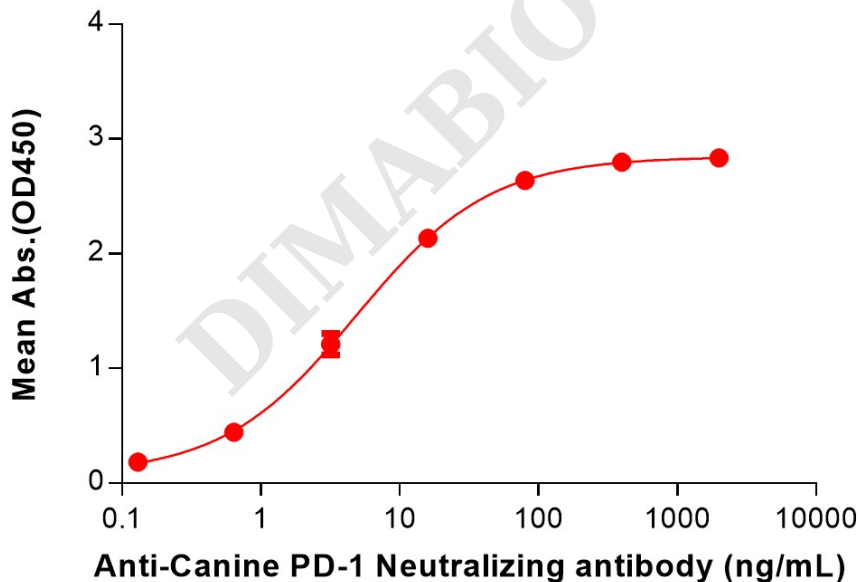


Figure 2. ELISA plate pre-coated by 2 μ g/mL (100 μ L/well) Canine PD-1 Protein, hFc Tag (PME-D100008) can bind Anti-Canine PD-1(INTERVET 4F12) mAb (BME100202) in a linear range of 0.64-80 ng/mL.



Anti-Canine PD-1(INTERVET 4F12) mAb ELISA

0.2 µg of Canine PD-1, mFc tagged protein per well

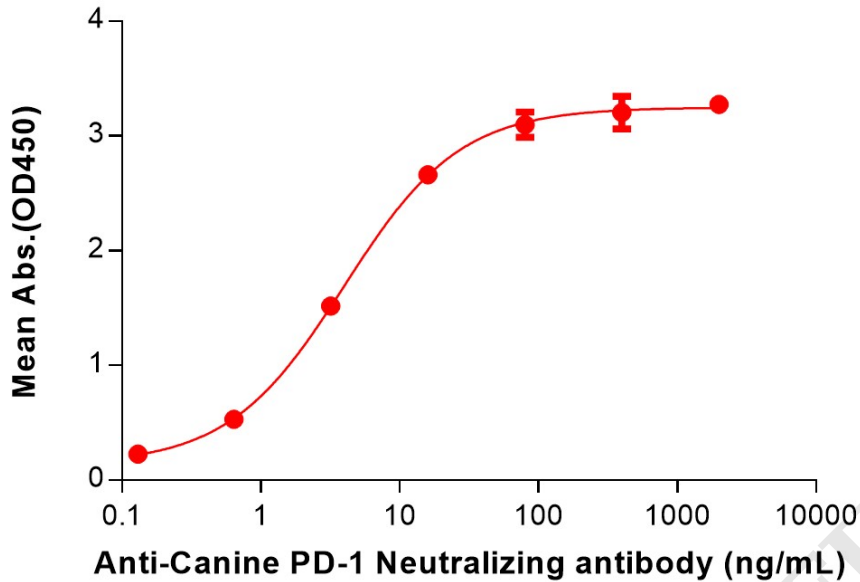


Figure 3. ELISA plate pre-coated by 2 µg/mL (100 µL/well) Canine PD-1 Protein, mFc Tag (PME-D100006) can bind Anti-Canine PD-1(INTERVET 4F12) mAb (BME100202) in a linear range of 0.64-80 ng/mL.

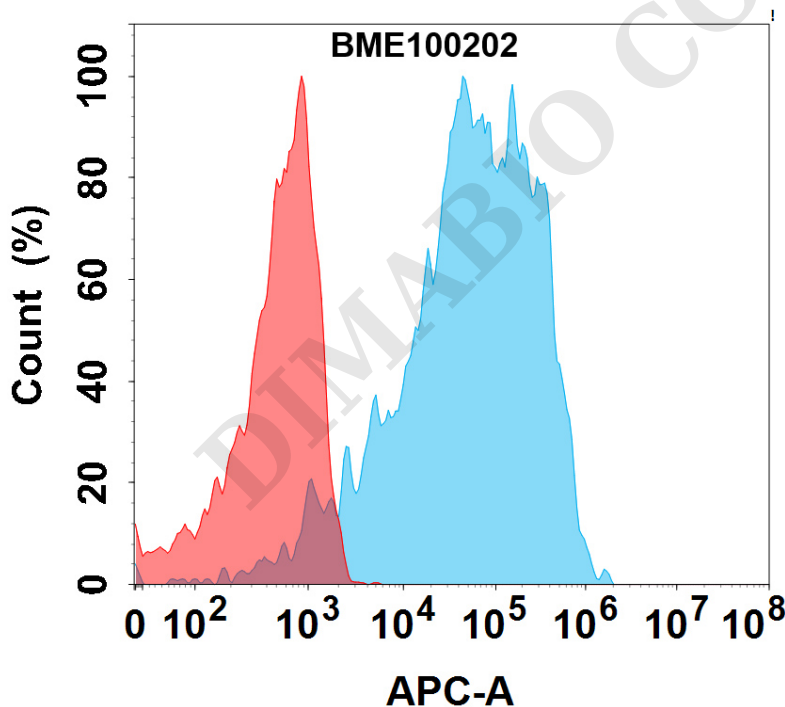


Figure 4. Flow cytometry analysis with 1µg/mL Anti-Canine PD-1(INTERVET 4F12) mAb (BME100202) on Expi293 cells transfected with Canine PD-1 protein (Blue histogram) or Expi293 transfected with irrelevant protein (Red histogram).

