

PRODUCT INFORMATION

Common Name	Warning: Undefined variable \$hasAttributeValueDescription in C:\wwwroot\mirror.dimabio.com\wp-content\plugins\woocommerce-print-products\publicclass-woocommerce-print-products-public.php on line 2806 CNT0 888
Synonyms	Warning: Undefined variable \$hasAttributeValueDescription in C:\wwwroot\mirror.dimabio.com\wp-content\plugins\woocommerce-print-products\publicclass-woocommerce-print-products-public.php on line 2806 HC111MCP-1MCP-1
Conjugate	Unconjugated
Applications	ELISA; Flow Cyt
Recommended Dilutions	ELISA 1:5000-10000; Flow Cyt 1:100
Formulation & Reconstitution	Lyophilized from sterile PBS, pH 7.4. Normally 5% - 8% trehalose is added as protectants before lyophilization. Please see Certificate of Analysis for specific instructions of reconstitution.
Host Species	Homo sapiens
IgG type	Human IgG1 - kappa
Reactivity	Human
Target	CCL2
Uniprot ID	P13500
Description	Anti-CCL2(carlumab biosimilar) mAb
Delivery	In Stock
Yefei_Storage	Store at -20°C to -80°C for 12 months in lyophilized form. After reconstitution, if not intended for use within a month, aliquot and store at -80°C (Avoid repeated freezing and thawing). Lyophilized proteins are shipped at ambient temperature.
Background	Research grade biosimilar. Not for use in therapeutic or diagnostic procedures for humans or animals.
Usage	Research use only

Anti-CCL2 (carlumab biosimilar) mAb ELISA

0.2 μ g of Human CCL2, hFc tagged protein per well

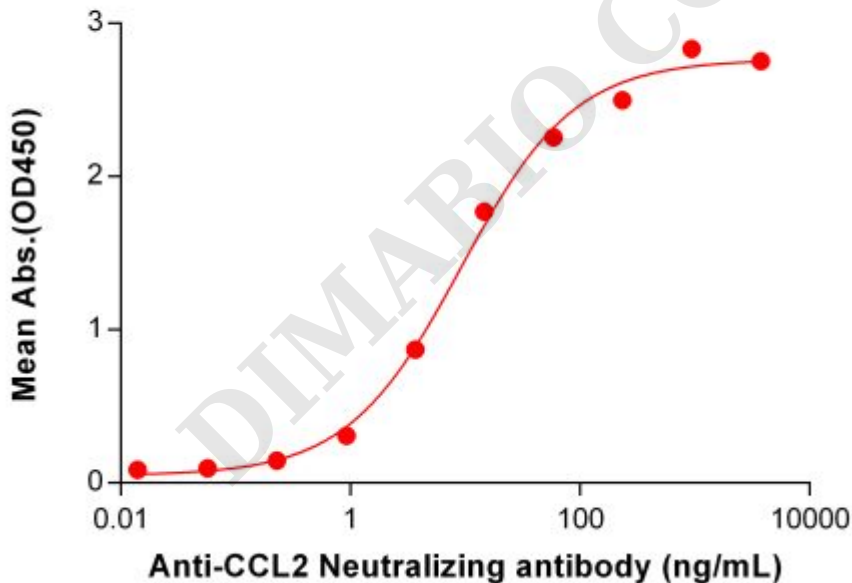


Figure 1. ELISA plate pre-coated by 2 μ g/mL (100 μ L/well) Human CCL2 Protein, hFc Tag (PME100919) can bind Anti-CCL2 Neutralizing antibody (BME100125) in a linear range of 0.92-234.38 ng/mL. In order to specifically detect BME100125, mouse anti-human Fab-specific antibody was used as detection antibody.



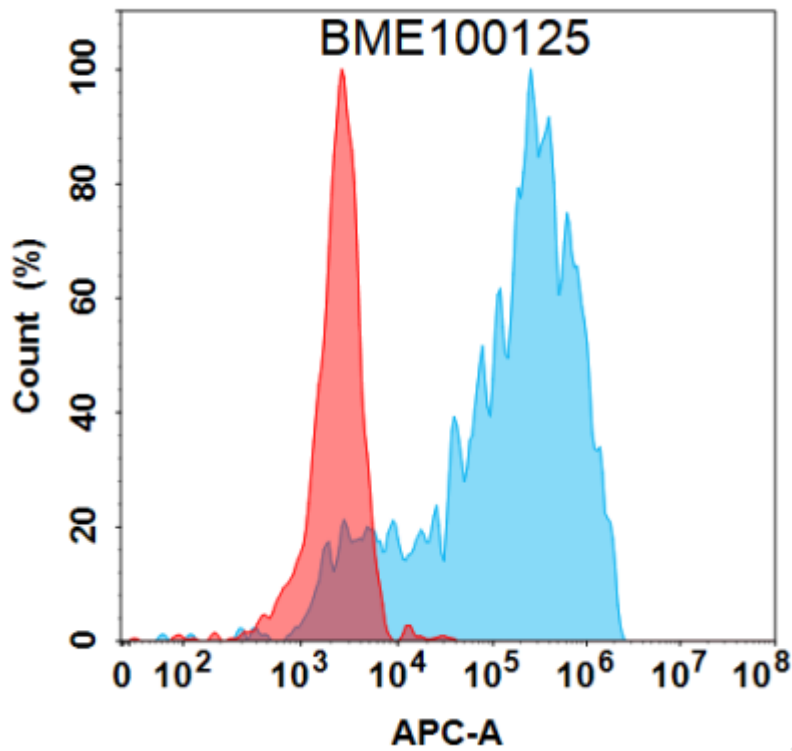


Figure 2. Flow cytometry analysis under cell membrane permeable condition with 1 $\mu\text{g}/\text{mL}$ Anti-CCL2 (carlumab biosimilar) mAb (BME100125) on HEK293 cells transfected with Human CCL2 protein (Blue histogram) or HEK293 transfected with irrelevant protein (Red histogram).

DIMABIO CONFIDENTIAL

