

PRODUCT INFORMATION

Common Name	4A19, BMS-986340
Synonyms	CC-CKR-8;CCR-8;CDw198;CKRL1;CMKBR8;CMKBRL2;CY6;GPCRY6;TER1
Applications	ELISA; Flow Cyt
Recommended Dilutions	ELISA 1:5000-10000; Flow Cyt 1:100
Formulation & Reconstitution	Lyophilized from sterile PBS, pH 7.4. Normally 5 % - 8% trehalose is added as protectants before lyophilization. Please see Certificate of Analysis for specific instructions of reconstitution.
Host Species	Humanized
IgG type	IgG1
Reactivity	Human
Target	CCR8
Uniprot ID	P51685
Description	Anti-CCR8(BMS 986340) mAb
Delivery	In Stock
Storage & Shipping	Store at -20°C to -80°C for 12 months in lyophilized form. After reconstitution, if not intended for use within a month, aliquot and store at -80°C (Avoid repeated freezing and thawing). Lyophilized proteins are shipped at ambient temperature.
Background	Research grade biosimilar. Not for use in therapeutic or diagnostic procedures for humans or animals.
Usage	Research use only
Conjugate	Unconjugated
DIMA Disclaimer	All DIMA recombinant antibodies are genuinely generated by DIMA Biotech. They are all under patent application. Any protein sequencing or reverse engineering attempt is prohibited. We are actively scrutinizing all patent application to ensure no IP infringement.

Anti-CCR8 (BMS 986340) mAb ELISA

0.2 µg of Human CCR8, mFc tagged protein per well

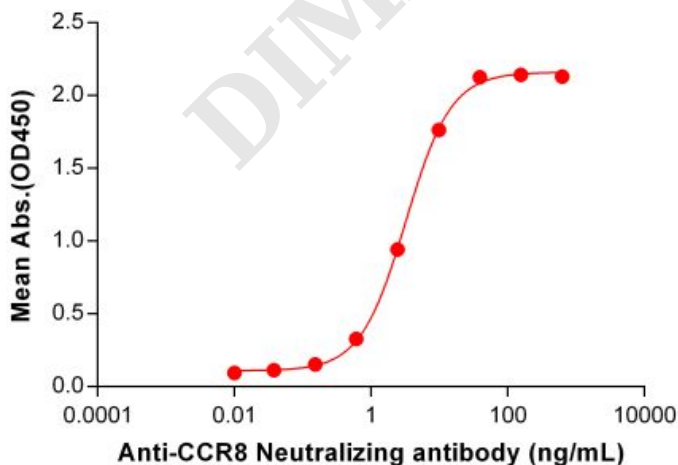


Figure 1. ELISA plate pre-coated by 2 µg/mL (100 µL/well) Human CCR8 Protein, mFc Tag (PME101103) can bind Anti-CCR8 Neutralizing antibody (BME100115) in a linear range of 0.15-39.06 ng/mL.



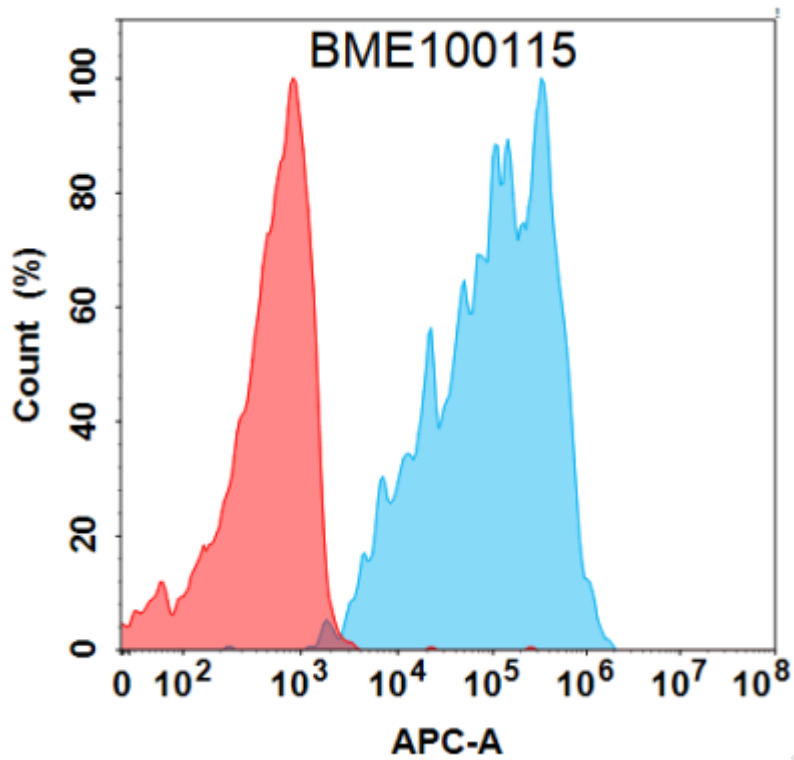


Figure 2. Flow cytometry analysis with 1 $\mu\text{g}/\text{mL}$ Anti-CCR8 (BMS 986340) mAb (BME100115) on Expi293 cells transfected with Human CCR8 protein (Blue histogram) or Expi293 transfected with irrelevant protein (Red histogram).

