

PRODUCT INFORMATION

Common Name	Warning: Undefined variable \$hasAttributeValueDescription in C:\wwwroot\mirror\dimabio.com\wp-content\plugins\woocommerce-print-products\public\class-woocommerce-print-products-public.php on line 2806 CSL324, CSL-324, CSL 324, G-CSFR
Conjugate	Unconjugated
Synonyms	CSF3R; GCSFR; G-CSF receptor; G-CSF-R
Applications	ELISA, Flow Cyt
Recommended Dilutions	ELISA 1:5000-10000, Flow Cyt 1:100
Formulation & Reconstitution	Lyophilized from sterile PBS, pH 7.4. Normally 5 % - 8% trehalose is added as protectants before lyophilization. Please see Certificate of Analysis for specific instructions of reconstitution.
Host Species	Homo sapiens
IgG type	Human IgG4 - Kappa
Reactivity	Human
Target	CD114
Uniprot ID	Q99062
Description	Anti-CD114(Anumigilimab biosimilar) mAb
Delivery	In Stock
Yefei Storage	Store at -20°C to -80°C for 12 months in lyophilized form. After reconstitution, if not intended for use within a month, aliquot and store at -80°C (Avoid repeated freezing and thawing). Lyophilized antibodies are shipped at ambient temperature.
Background	Research grade biosimilar. Not for use in therapeutic or diagnostic procedures for humans or animals.
Usage	Research use only

Anti-CD114(Anumigilimab biosimilar) mAb ELISA

0.5 µg of Human CD114, His tagged protein per well

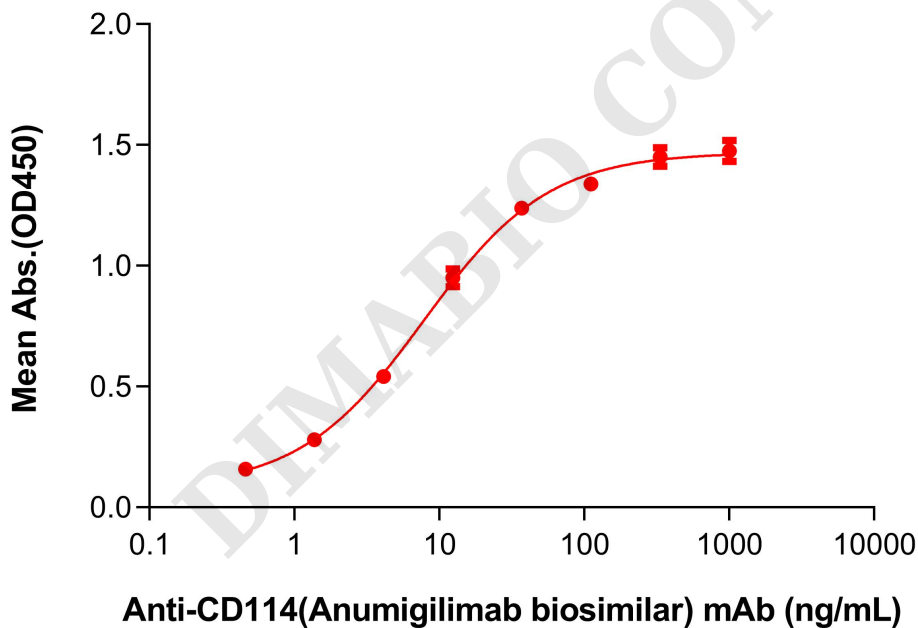


Figure 1. ELISA plate pre-coated by 5 µg/mL (100 µL/well) Human CD114 protein, His Tag (PME100083) can bind Anti-CD114(Anumigilimab biosimilar) mAb (BME100280) in a linear range of 1.37-111.11 ng/mL.



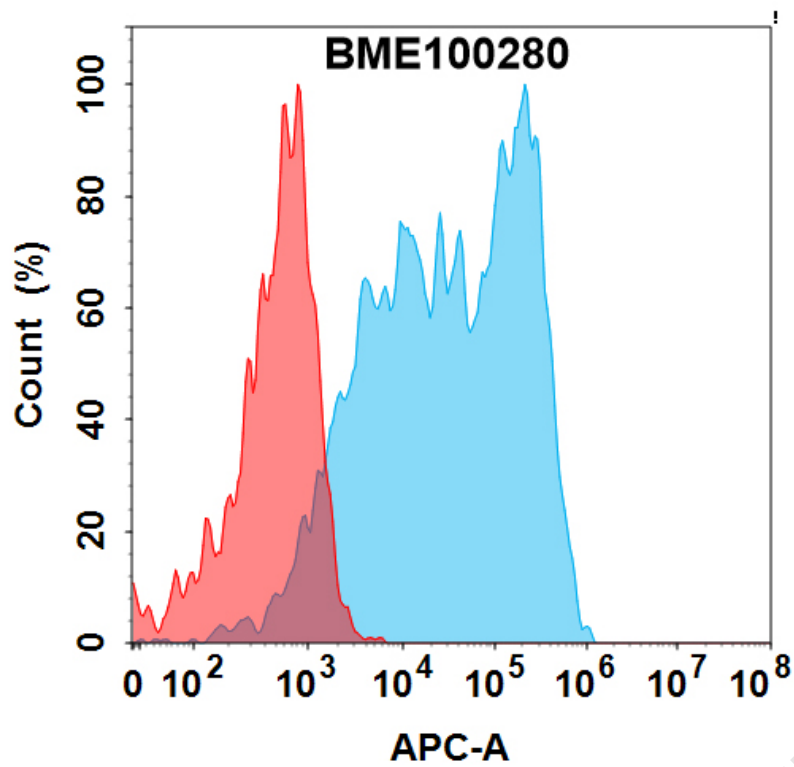


Figure 2. Flow cytometry analysis with 1 µg/mL Anti-CD114(Anumigilimab biosimilar) mAb (BME100280) on HEK293 cells transfected with Human CD114 protein (Blue histogram) or HEK293 transfected with irrelevant protein (Red histogram).

DIMABIO CONFIDENTIAL

