

**PRODUCT INFORMATION**

<b>Clone ID</b>	DM31
<b>Target</b>	CD123
<b>Synonyms</b>	IL3R; IL3RA; IL-3Ra; IL-3R-alpha; IL3RAY; IL3RX; IL3RY; CD123 antigen; CD123; hIL3Ra; hIL-3Ra; MGC34174; IL-3 R alpha
<b>Host Species</b>	Rabbit
<b>Description</b>	Anti-CD123 antibody(DM31); Rabbit mAb
<b>Delivery</b>	In Stock
<b>Uniprot ID</b>	P26951
<b>IgG type</b>	Rabbit IgG
<b>Clonality</b>	Monoclonal
<b>Reactivity</b>	Human
<b>Applications</b>	ELISA; Flow Cyt
<b>Recommended Dilutions</b>	ELISA 1:5000-10000; Flow Cyt 1:100
<b>Purification</b>	Purified from cell culture supernatant by affinity chromatography
<b>Formulation &amp; Reconstitution</b>	Lyophilized from sterile PBS, pH 7.4. Normally 5 % - 8% trehalose is added as protectants before lyophilization. Please see Certificate of Analysis for specific instructions of reconstitution.
<b>Storage &amp; Shipping</b>	Store at -20°C to -80°C for 12 months in lyophilized form. After reconstitution, if not intended for use within a month, aliquot and store at -80°C (Avoid repeated freezing and thawing). Lyophilized proteins are shipped at ambient temperature.
<b>Background</b>	Interleukin 3 receptor alpha (low affinity) (IL3RA); also known as CD123 (Cluster of Differentiation 123) is a 70-kD glycoprotein member of the hematopoietin receptor superfamily. This protein associates with a beta subunit common to the receptors for IL-5 and granulocyte-macrophage colony-stimulating factor (GM-CSF) to form a high-affinity receptor for IL-3. The interleukin-3 receptor a chain (CD123) has been identified as a potential immunotherapeutic target because it is overexpressed in AML compared with normal hematopoietic stem cells.
<b>Usage</b>	Research use only
<b>Conjugate</b>	Unconjugated
<b>DIMA Disclaimer</b>	All DIMA recombinant antibodies are genuinely generated by DIMA Biotech. They are all under patent application. Any protein sequencing or reverse engineering attempt is prohibited. We are actively scrutinizing all patent application to ensure no IP infringement.



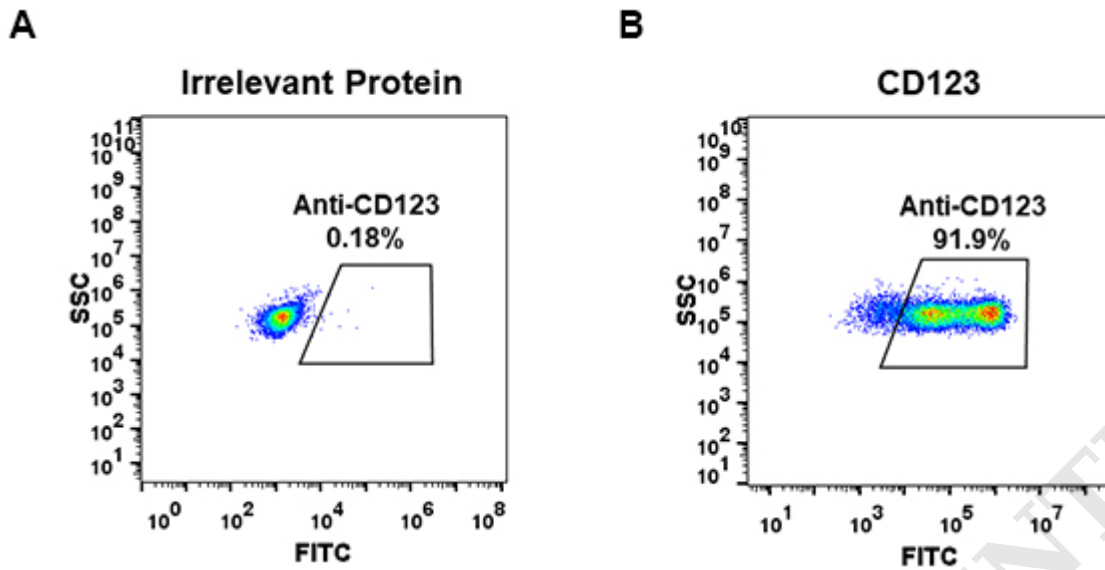


Figure 1. Expi 293 cell line transfected with irrelevant protein (left) and human CD123(right) were surface stained with Rabbit anti-CD123 monoclonal antibody  $1\mu\text{g/ml}$  ( clone: DM31) followed by Alexa 488-conjugated anti-rabbit IgG secondary antibody.

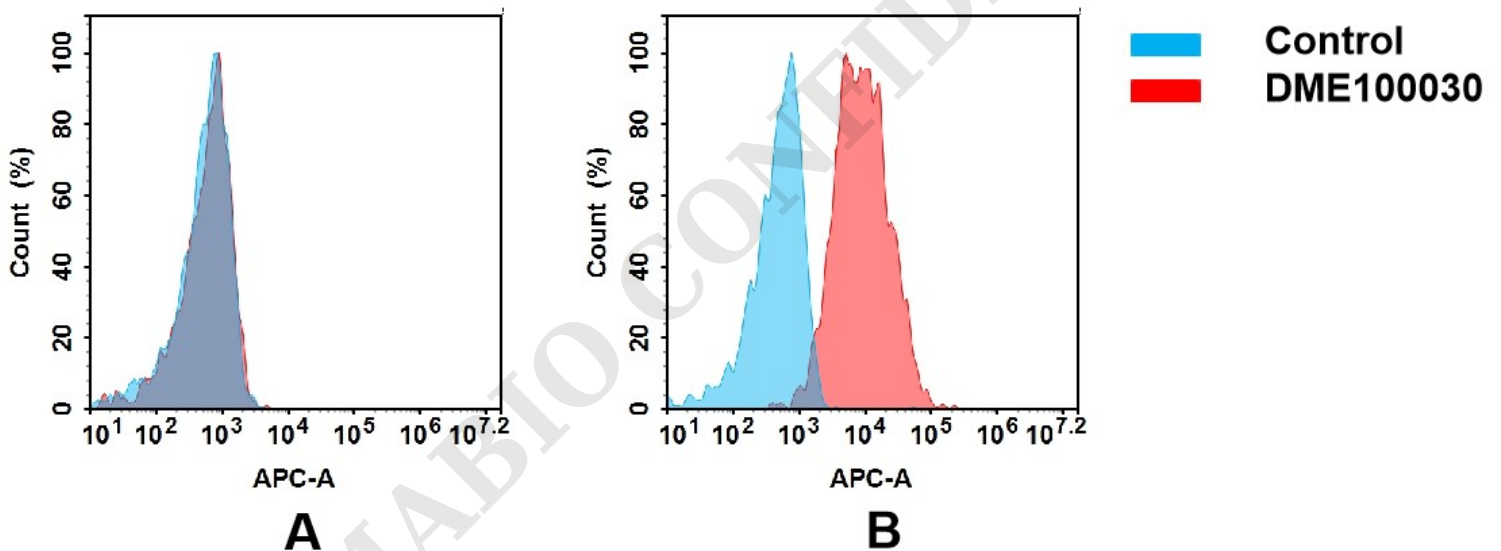


Figure 2. Flow cytometry analysis of antigen binding of rabbit anti-human CD123 mAb(DME100030).

(A) DME100030 does not bind to CHO-S cells that do not express CD123.

(B) A clear peak shift of DME100030 was seen compared to the control when incubated with CD123-expressing THP-1 cells, indicating strong binding of DME100030 to CD123. Antibodies were incubated at  $5\mu\text{g/mL}$ .

