

PRODUCT INFORMATION

| | |
|---|--|
| Clone ID | Warning: Undefined variable \$hasAttributeValueDescription in C:\wwwroot\mirror.dimabio.com\wp-content\plugins\woocommerce-print-products\publicclass-woocommerce-print-products-public.php on line 2806 DM33 |
| Target | CD123 |
| Synonyms | IL3R; IL3RA; IL-3Ra; IL-3R-alpha; IL3RAY; IL3RX; IL3RY; CD123 antigen; CD123; hIL3Ra; MGC34174; IL-3 R alpha |
| Host Species | Rabbit |
| Description | Anti-CD123 antibody(DM33); Rabbit mAb |
| Delivery | In Stock |
| Uniprot ID | P26951 |
| IgG type | Rabbit IgG |
| Clonality | Monoclonal |
| Reactivity | Human |
| Applications | ELISA; Flow Cyt |
| Recommended Dilutions | ELISA 1:5000-10000; Flow Cyt 1:100 |
| Purification | Purified from cell culture supernatant by affinity chromatography |
| Formulation & Reconstitution | Lyophilized from sterile PBS, pH 7.4. Normally 5% - 8% trehalose is added as protectants before lyophilization. Please see Certificate of Analysis for specific instructions of reconstitution. |
| Yefei Storage | Store at -20°C to -80°C for 12 months in lyophilized form. After reconstitution, if not intended for use within a month, aliquot and store at -80°C (Avoid repeated freezing and thawing). Lyophilized proteins are shipped at ambient temperature. |
| Background | Interleukin 3 receptor alpha (low affinity) (IL3RA), also known as CD123 (Cluster of Differentiation 123) is a 70-kD glycoprotein member of the hematopoietin receptor superfamily. This protein associates with a beta subunit common to the receptors for IL-?? |
| Usage | Research use only |
| Conjugate | Unconjugated |
| DIMA Disclaimer | All DIMA recombinant antibodies are genuinely generated by DIMA Biotech. They are all under patent application. Any protein sequencing or reverse engineering attempt is prohibited. We are actively scrutinizing all patent application to ensure no IP infringement. |

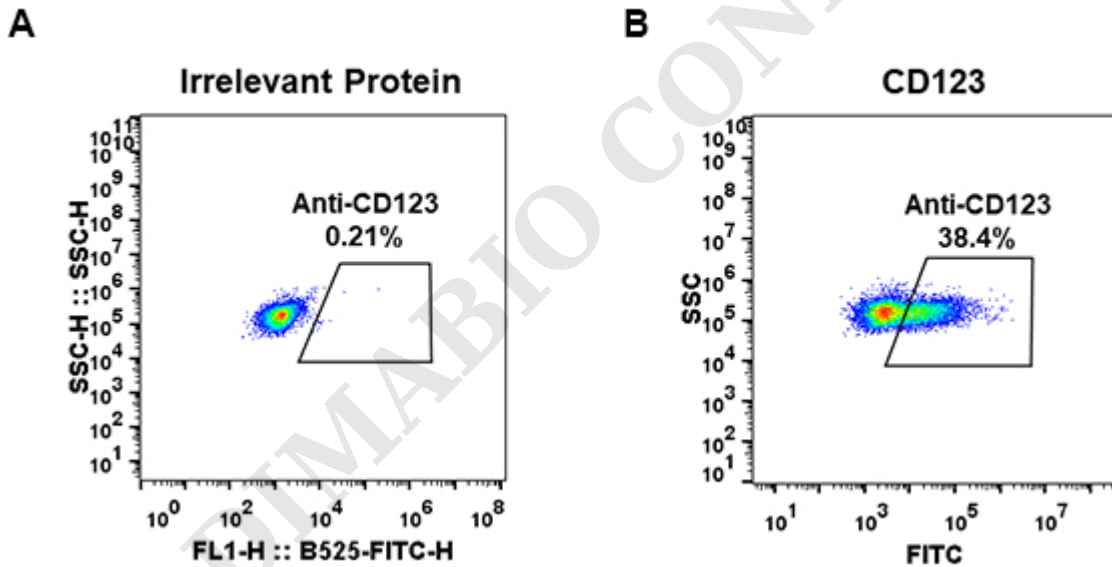


Figure 1. HEK293 cell line transfected with irrelevant protein (left) and human CD123(right) were surface stained with Rabbit anti-CD123 monoclonal antibody 1 μ g/ml (clone: DM33) followed by Alexa 488-conjugated anti-rabbit IgG secondary antibody.



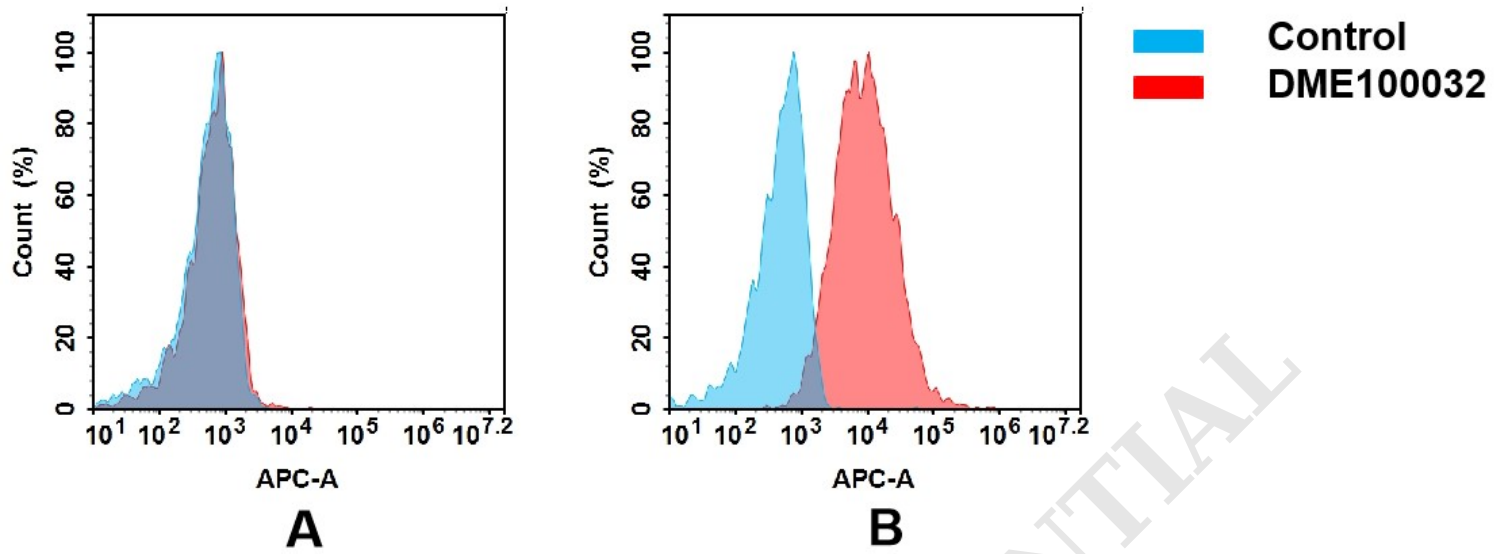


Figure 2. Flow cytometry analysis of antigen binding of rabbit anti-human CD123 mAb(DME100032).

(A) DME100032 does not bind to CHO-S cells that do not express CD123.

(B) A clear peak shift of DME100032 was seen compared to the control when incubated with CD123-expressing THP-1 cells, indicating strong binding of DME100032 to CD123. Antibodies were incubated at 5 μ g/mL.

DIMABIO CONFIDENTIAL

