

PRODUCT INFORMATION

Clone ID	Warning: Undefined variable \$hasAttributeValueDescription in C:\wwwroot\mirror.dimabio.com\wp-content\plugins\woocommerce-print-products\publicclass-woocommerce-print-products-public.php on line 2806 DMC682
Target	CD166
Synonyms	CD166; MEMD
Host Species	Rabbit
Description	Anti-CD166 antibody(DMC682); IgG1 Chimeric mAb
Delivery	In Stock
Uniprot ID	Q13740-1
IgG type	Rabbit/Human Fc chimeric IgG1
Clonality	Monoclonal
Reactivity	Human
Applications	Flow Cyt
Recommended Dilutions	Flow Cyt 1:100
Purification	Purified from cell culture supernatant by affinity chromatography
Formulation & Reconstitution	Lyophilized from sterile PBS, pH 7.4. Normally 5% - 8% trehalose is added as protectants before lyophilization. Please see Certificate of Analysis for specific instructions of reconstitution.
Yefei Storage	Store at -20°C to -80°C for 12 months in lyophilized form. After reconstitution, if not intended for use within a month, aliquot and store at -80°C (Avoid repeated freezing and thawing). Lyophilized proteins are shipped at ambient temperature.
Background	This gene encodes activated leukocyte cell adhesion molecule (ALCAM); also known as CD166 (cluster of differentiation 166); which is a member of a subfamily of immunoglobulin receptors with five immunoglobulin-like domains (VVC2C2C2) in the extracellular domain. This protein binds to T-cell differentiation antigens CD6; and is implicated in the processes of cell adhesion and migration. Multiple alternatively spliced transcript variants encoding different isoforms have been found. [provided by RefSeq; Aug 2011]
Usage	Research use only
Conjugate	Unconjugated
DIMA Disclaimer	All DIMA recombinant antibodies are genuinely generated by DIMA Biotech. They are all under patent application. Any protein sequencing or reverse engineering attempt is prohibited. We are actively scrutinizing all patent application to ensure no IP infringement.

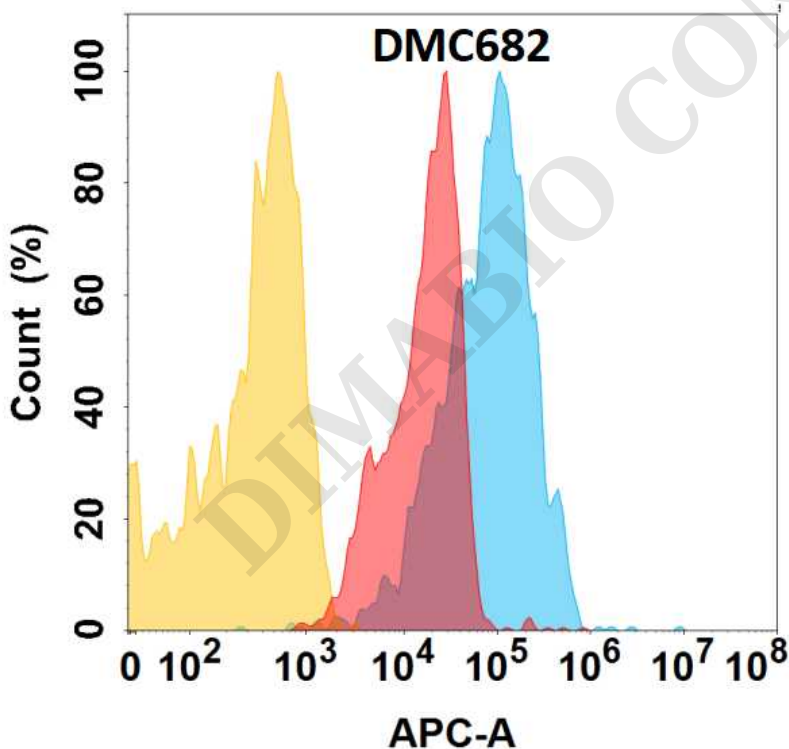


Figure 1. CD166 protein is expressed on the surface of HEK293 cell membrane. Flow cytometry analysis with Anti-CD166 (DMC682) on HEK293 cells transfected with human CD166 (Blue histogram) or HEK293 transfected with irrelevant protein (Red histogram), and Isotype antibody on HEK293 transfected with irrelevant protein (Orange histogram).



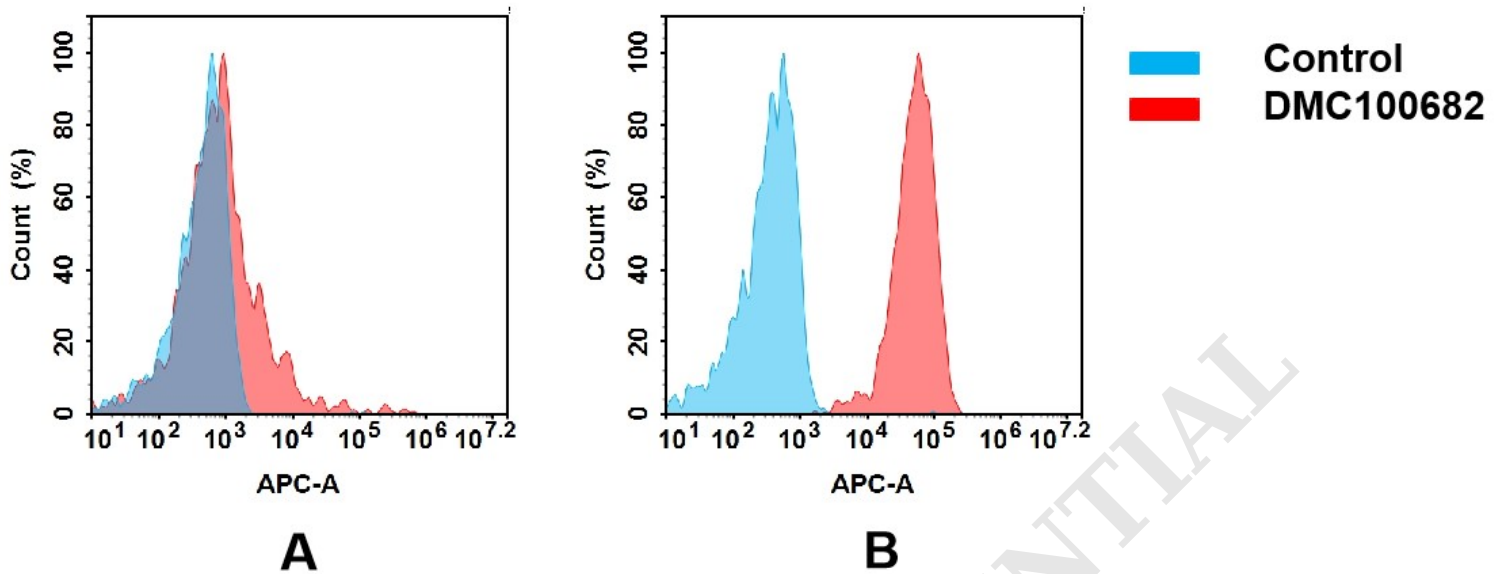


Figure 2. Flow cytometry analysis of antigen binding of anti-human CD166 mAb(DMC100682).

(A) DMC100682 does not bind to K562 cells that do not express CD166.

(B) A clear peak shift of DMC100682 was seen compared to the control when incubated with CD166-expressing HeLa cells, indicating strong binding of DMC100682 to CD166. Antibodies were incubated at 5 µg/mL.

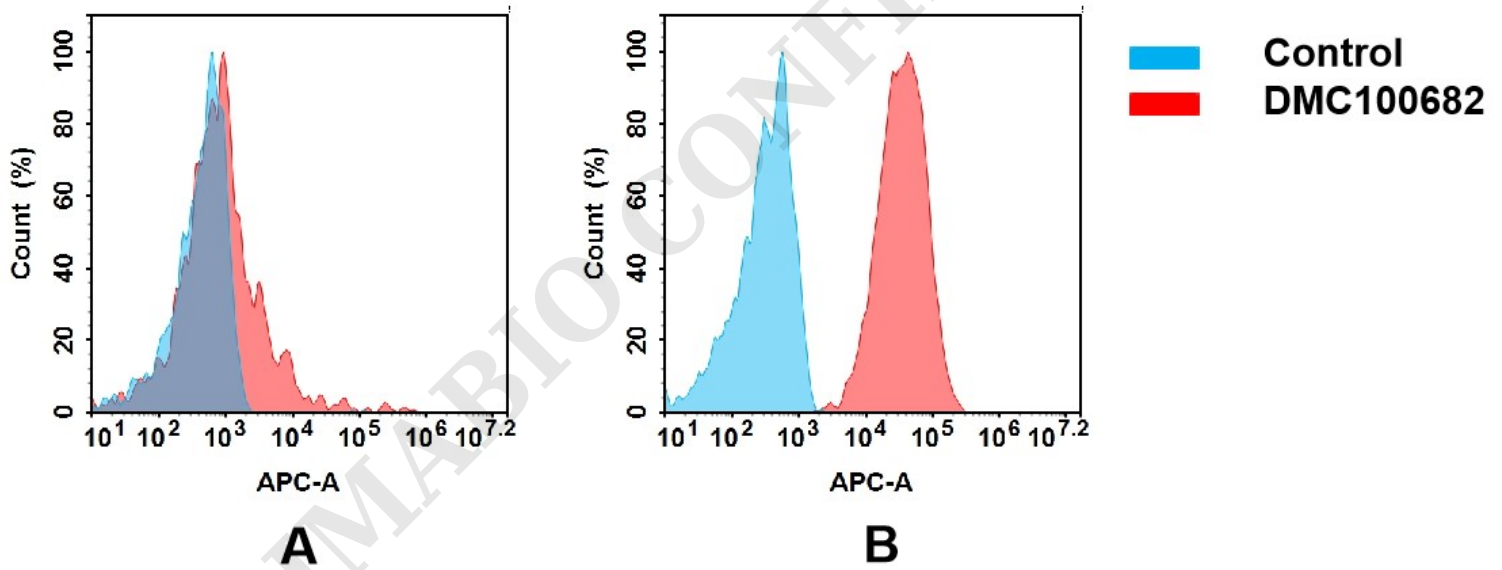


Figure 3. Flow cytometry analysis of antigen binding of anti-human CD166 mAb(DMC100682).

(A) DMC100682 does not bind to K562 cells that do not express CD166.

(B) A clear peak shift of DMC100682 was seen compared to the control when incubated with CD166-expressing Huh7 cells, indicating strong binding of DMC100682 to CD166. Antibodies were incubated at 5 µg/mL.

