

PRODUCT INFORMATION

Clone ID	Warning: Undefined variable \$hasAttributeValueDescription in C:\wwwroot\mirror.dimabio.com\wp-content\plugins\woocommerce-print-products\publicclass-woocommerce-print-products-public.php on line 2806 DM63
Target	CD28
Synonyms	CD28; Tp44
Host Species	Rabbit
Description	Anti-CD28 antibody(DM63); Rabbit mAb
Delivery	In Stock
Uniprot ID	P10747
IgG type	Rabbit IgG
Clonality	Monoclonal
Reactivity	Human
Applications	ELISA; Flow Cyt
Recommended Dilutions	ELISA 1:5000-10000; Flow Cyt 1:100
Purification	Purified from cell culture supernatant by affinity chromatography
Formulation & Reconstitution	Lyophilized from sterile PBS, pH 7.4. Normally 5% - 8% trehalose is added as protectants before lyophilization. Please see Certificate of Analysis for specific instructions of reconstitution.
Yefei Storage	Store at -20°C to -80°C for 12 months in lyophilized form. After reconstitution, if not intended for use within a month, aliquot and store at -80°C (Avoid repeated freezing and thawing). Lyophilized proteins are shipped at ambient temperature.
Background	The protein encoded by this gene is essential for T-cell proliferation and survival; cytokine production; and T-helper type-2 development. Several alternatively spliced transcript variants encoding different isoforms have been found for this gene.
Usage	Research use only
Conjugate	Unconjugated
DIMA Disclaimer	All DIMA recombinant antibodies are genuinely generated by DIMA Biotech. They are all under patent application. Any protein sequencing or reverse engineering attempt is prohibited. We are actively scrutinizing all patent application to ensure no IP infringement.

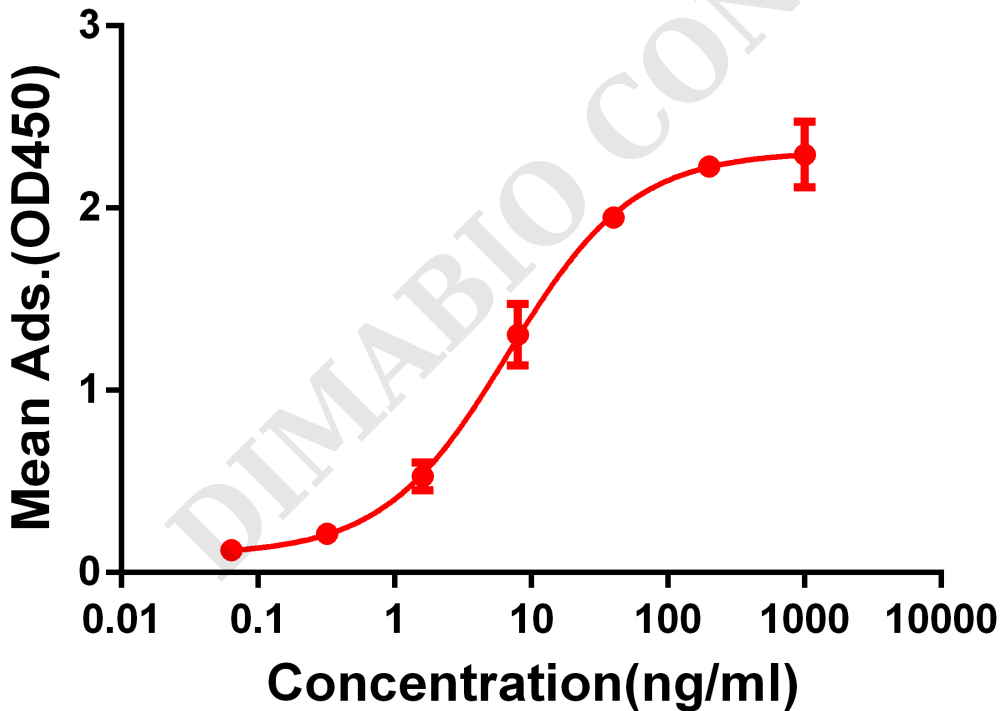


Figure 1. ELISA plate pre-coated by 2 µg/ml (100 µl/well) Human CD28 protein, mFc-His tagged protein PME100014 can bind Rabbit anti-CD28 monoclonal antibody (clone: DM63) in a linear range of 1-100 ng/ml.



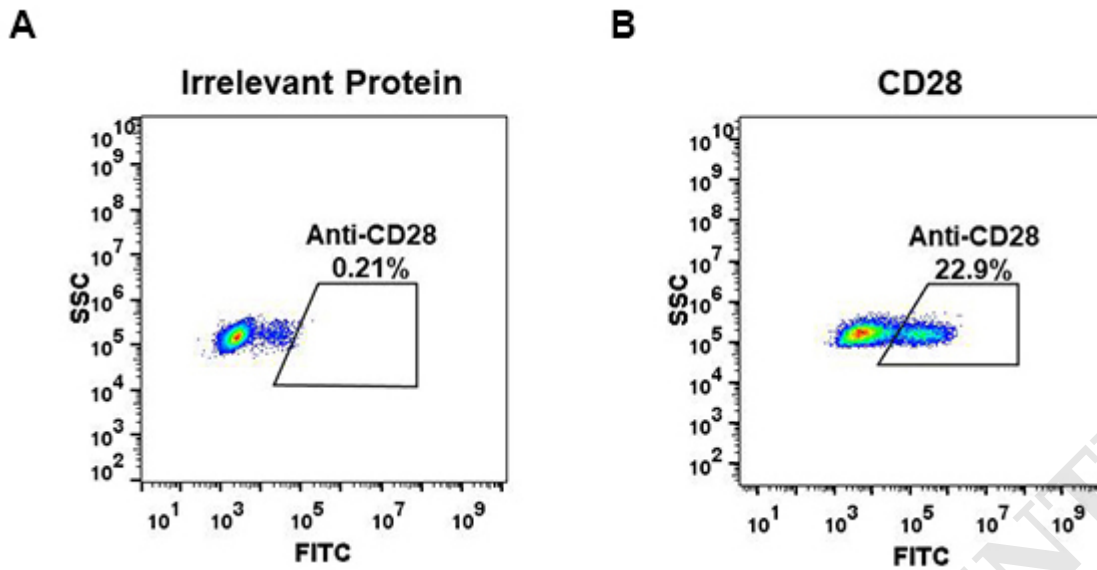


Figure 2. HEK293 cell line transfected with irrelevant protein (A) and human CD28 (B) were surface stained with Rabbit anti-CD28 monoclonal antibody $1\mu\text{g/ml}$ (clone: DM63) followed by Alexa 488-conjugated anti-rabbit IgG secondary antibody.

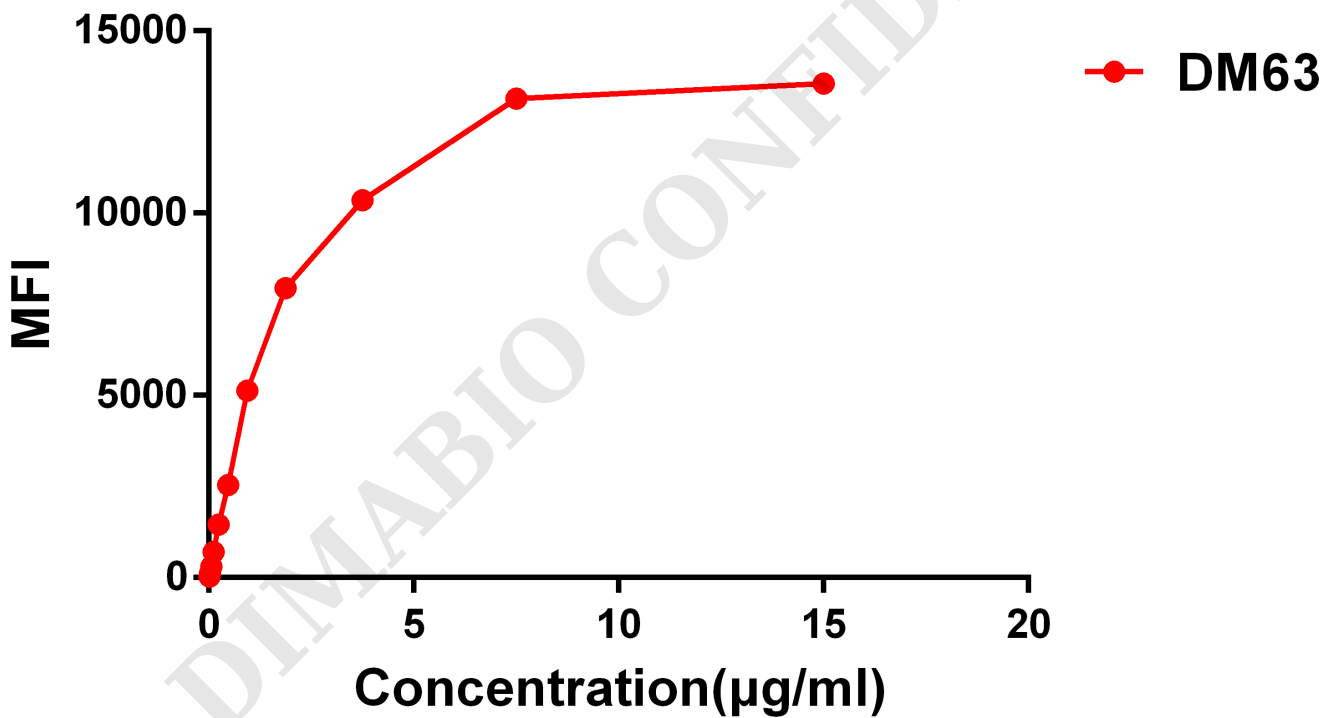


Figure 3. Flow cytometry data of serially titrated Rabbit anti-CD28 monoclonal antibody (clone: DM63) on Jurkat cells. The Y-axis represents the mean fluorescence intensity (MFI) while the X-axis represents the concentration of IgG used.



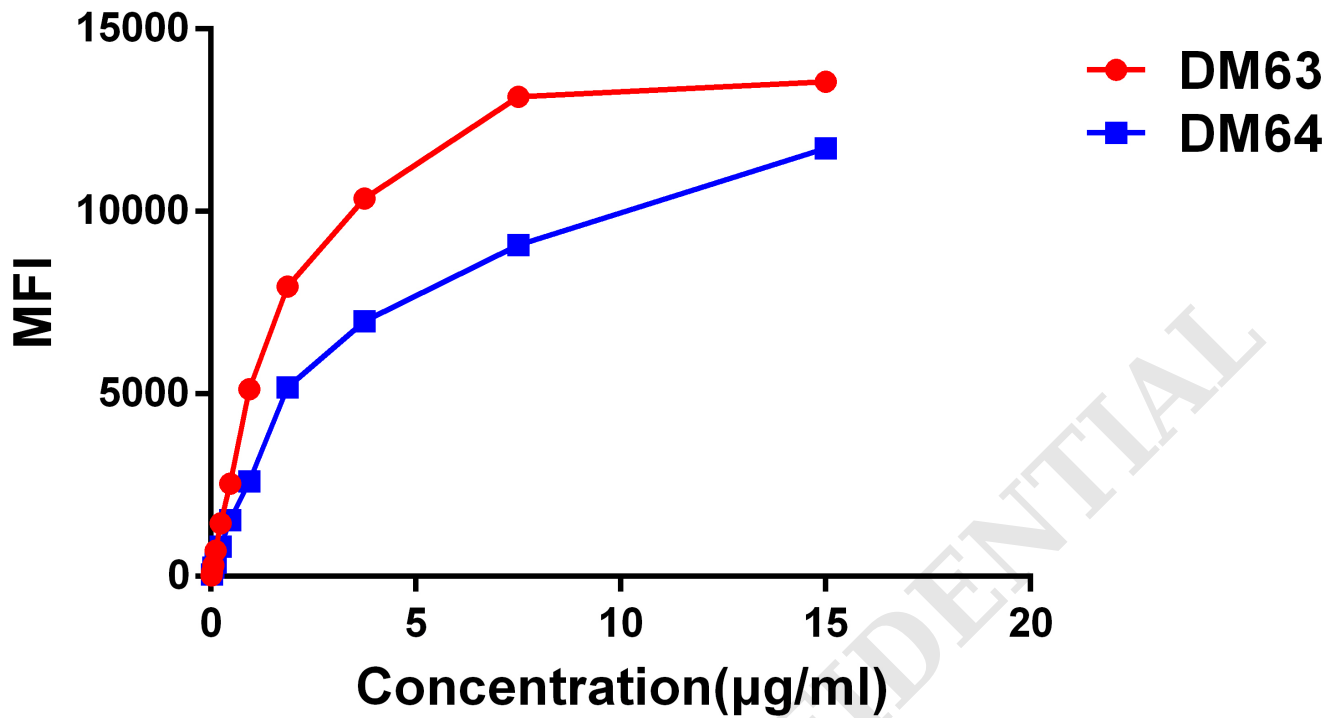


Figure 4. Affinity ranking of different Rabbit anti- CD28 mAb clones by titration of different concentration onto Jurkat cells. The Y-axis represents the mean fluorescence intensity (MFI) while the X-axis represents the concentration of IgG used.

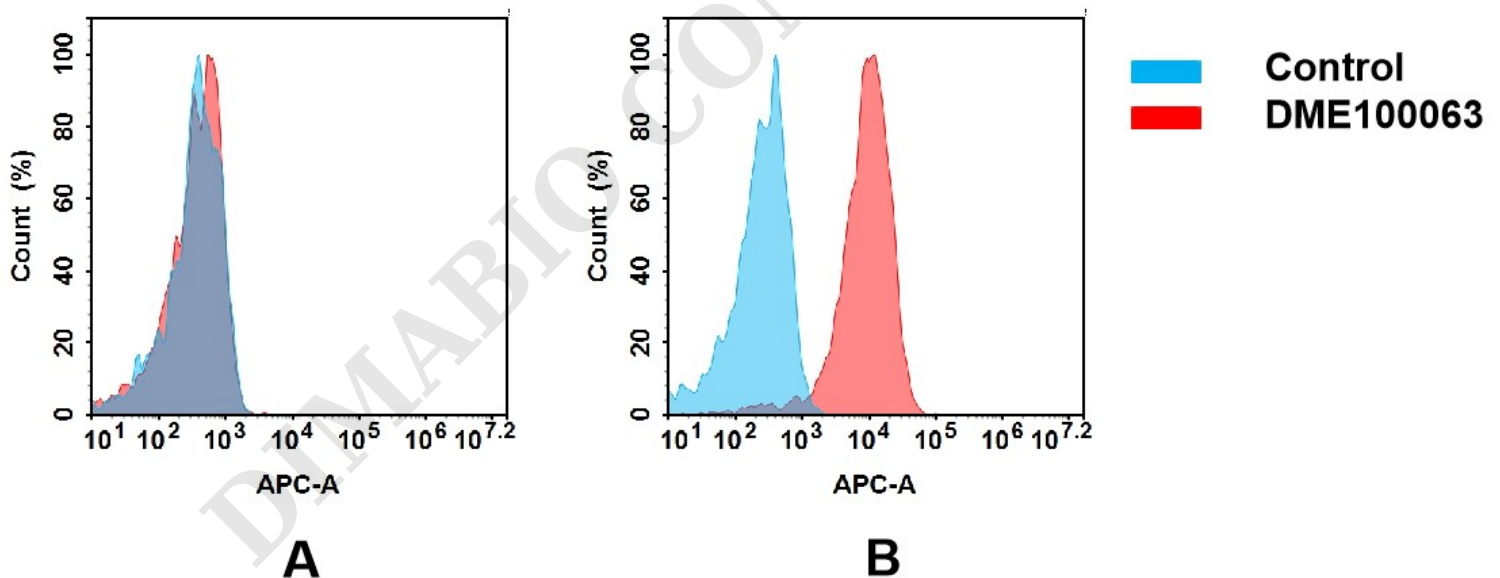


Figure 5. Flow cytometry analysis of antigen binding of rabbit anti-human CD28 mAb(DME100063).

(A) DME100063 does not bind to 293T cells that do not express CD28.

(B) A clear peak shift of DME100063 was seen compared to the control when incubated with CD28-expressing Jurkat cells, indicating strong binding of DME100063 to CD28. Antibodies were incubated at 2 µg/mL.

