

## PRODUCT INFORMATION

<b>Common Name</b>	<b>Warning:</b> Undefined variable \$hasAttributeValueDescription in C:\wwwroot\mirror.dimabio.com\wp-content\plugins\woocommerce-print-products\public\class-woocommerce-print-products-public.php on line 2806 CDP-771, CMA-676, WAY-CMA-676.
<b>Synonyms</b>	<b>Warning:</b> Undefined variable \$hasAttributeValueDescription in C:\wwwroot\mirror.dimabio.com\wp-content\plugins\woocommerce-print-products\public\class-woocommerce-print-products-public.php on line 2806 CD33-SiGLEC3gp67
<b>Conjugate</b>	Unconjugated
<b>Applications</b>	Flow Cyt
<b>Recommended Dilutions</b>	Flow Cyt 1:100
<b>Formulation &amp; Reconstitution</b>	Lyophilized from sterile PBS, pH 7.4. Normally 5% - 8% trehalose is added as protectants before lyophilization. Please see Certificate of Analysis for specific instructions of reconstitution.
<b>Host Species</b>	Humanized
<b>IgG type</b>	Human IgG4 - Kappa
<b>Reactivity</b>	Human
<b>Target</b>	CD33
<b>Uniprot ID</b>	P20138
<b>Description</b>	Anti-CD33 (gemtuzumab biosimilar) mAb
<b>Delivery</b>	In Stock
<b>Yefei_Storage</b>	Store at -20°C to -80°C for 12 months in lyophilized form. After reconstitution, if not intended for use within a month, aliquot and store at -80°C (Avoid repeated freezing and thawing). Lyophilized proteins are shipped at ambient temperature.
<b>Background</b>	Research grade biosimilar. Not for use in therapeutic or diagnostic procedures for humans or animals.
<b>Usage</b>	Research use only

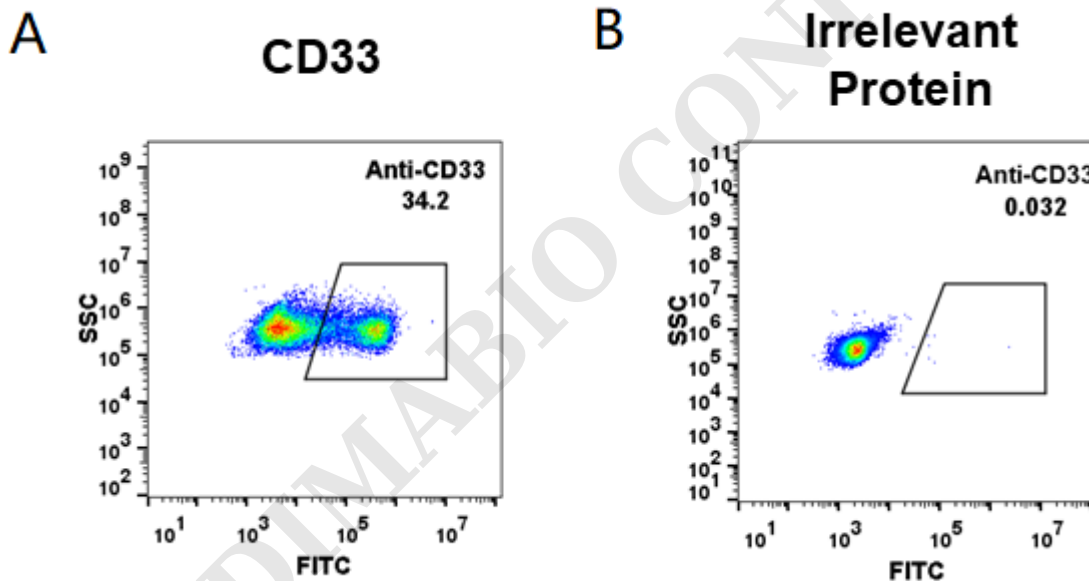


Figure 1. HEK293 cell line transfected with irrelevant protein (B) and human CD33 (A) were surface stained with anti-CD33 neutralizing antibody 1µg/ml (gemtuzumab) followed by Alexa 488-conjugated anti-human IgG secondary antibody.



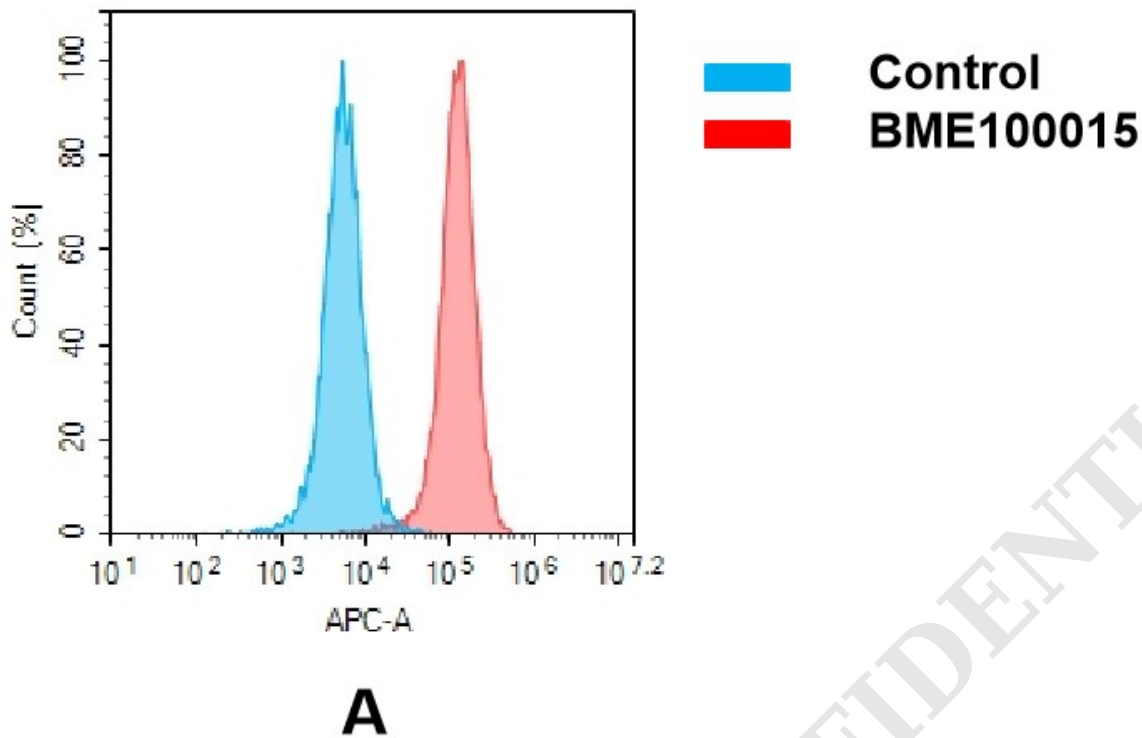


Figure 2. Flow cytometry analysis of antigen binding of anti-human CD33 mAb(BME100015). (A) A clear peak shift of BME100015 was seen compared to the control when incubated with CD33-expressing 8226 cells, indicating strong binding of BME100015 to CD33. Antibodies were incubated at 2  $\mu$ g/mL.

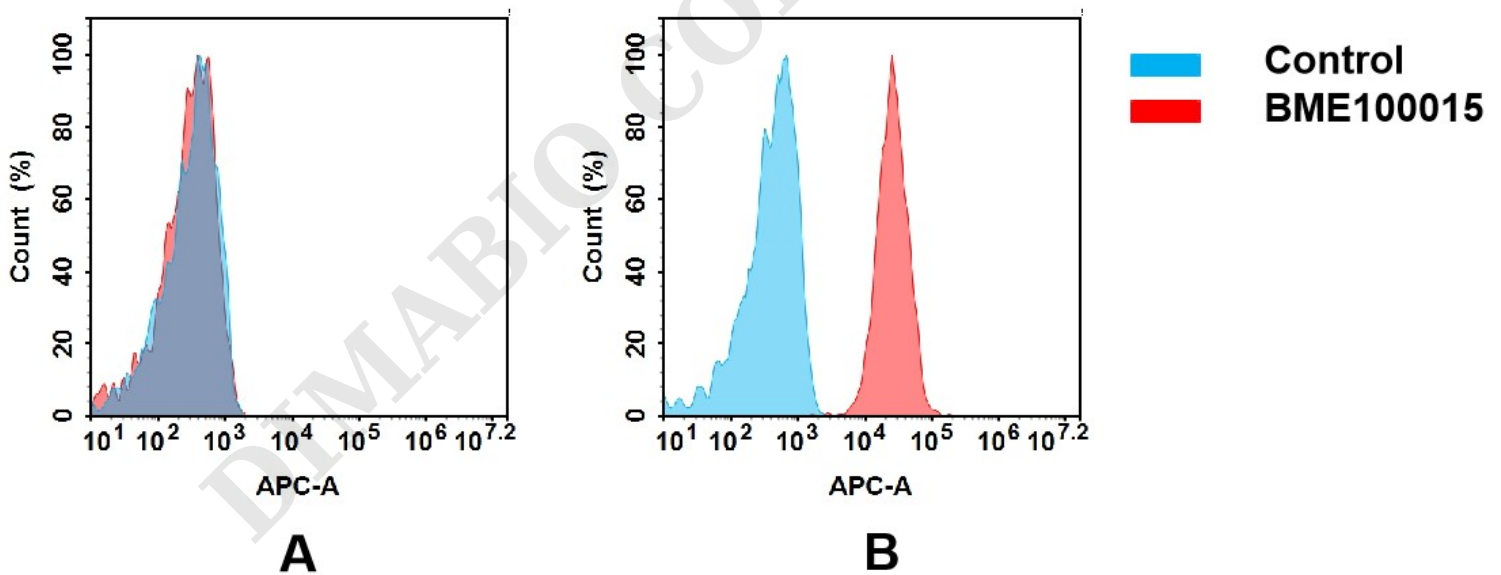


Figure 3. Flow cytometry analysis of antigen binding of anti-human CD33 mAb(BME100015). (A) BME100015 does not bind to 293T cells that do not express CD33. (B) A clear peak shift of BME100015 was seen compared to the control when incubated with CD33-expressing THP-1 cells, indicating strong binding of BME100015 to CD33. Antibodies were incubated at 5  $\mu$ g/mL.

