

PRODUCT INFORMATION

Common Name	TJ-011133, TJC-4
Synonyms	CD47;MER6;IAP
Applications	ELISA; Flow Cyt
Recommended Dilutions	ELISA 1:5000-10000; Flow Cyt 1:100
Formulation & Reconstitution	Lyophilized from sterile PBS, pH 7.4. Normally 5% - 8% trehalose is added as protectants before lyophilization. Please see Certificate of Analysis for specific instructions of reconstitution.
Host Species	Humanized
IgG type	IgG4
Reactivity	Human
Target	CD47
Uniprot ID	Q08722
Description	Anti-CD47(lemzoparlimab biosimilar) mAb
Delivery	In Stock
Storage & Shipping	Store at -20°C to -80°C for 12 months in lyophilized form. After reconstitution, if not intended for use within a month, aliquot and store at -80°C (Avoid repeated freezing and thawing). Lyophilized proteins are shipped at ambient temperature.
Background	Research grade biosimilar. Not for use in therapeutic or diagnostic procedures for humans or animals.
Usage	Research use only
Conjugate	Unconjugated
DIMA Disclaimer	All DIMA recombinant antibodies are genuinely generated by DIMA Biotech. They are all under patent application. Any protein sequencing or reverse engineering attempt is prohibited. We are actively scrutinizing all patent application to ensure no IP infringement.



Anti-CD47 (lemzoparlimab biosimilar) mAb ELISA

0.1 μ g of Human CD47, mFc-His tagged protein per well

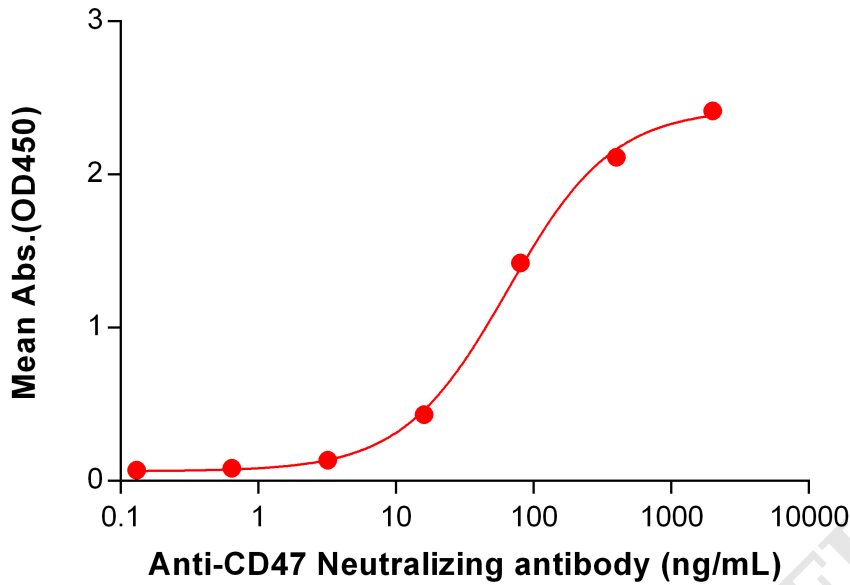


Figure 1. ELISA plate pre-coated by 1 μ g/mL (100 μ L/well) Human CD47 protein, mFc-His Tag PME100008 can bind Anti-CD47 Neutralizing antibody (BME100076) in a linear range of 3.2-400 ng/mL.

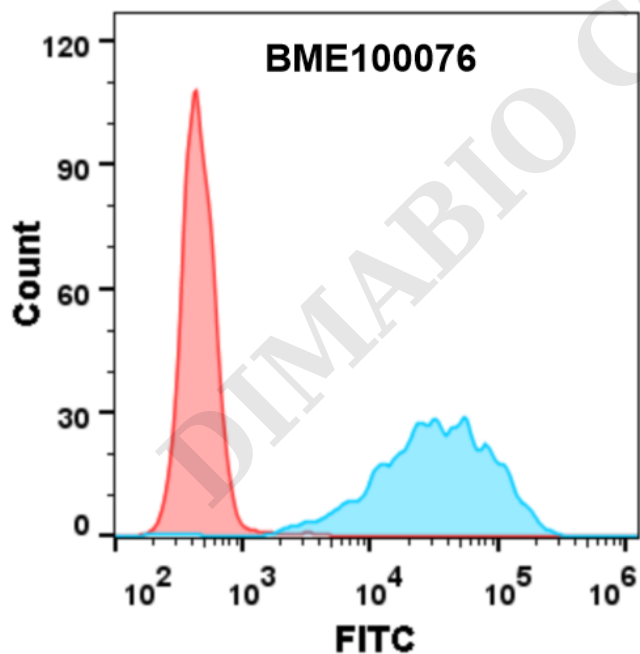


Figure 2. Jurkat cell line were surface stained with anti-CD47 (BME100076) (Blue histogram) and isotype control (Red histogram) 1 μ g/ml followed by Alexa 488-conjugated Goat anti-Human IgG secondary antibody.



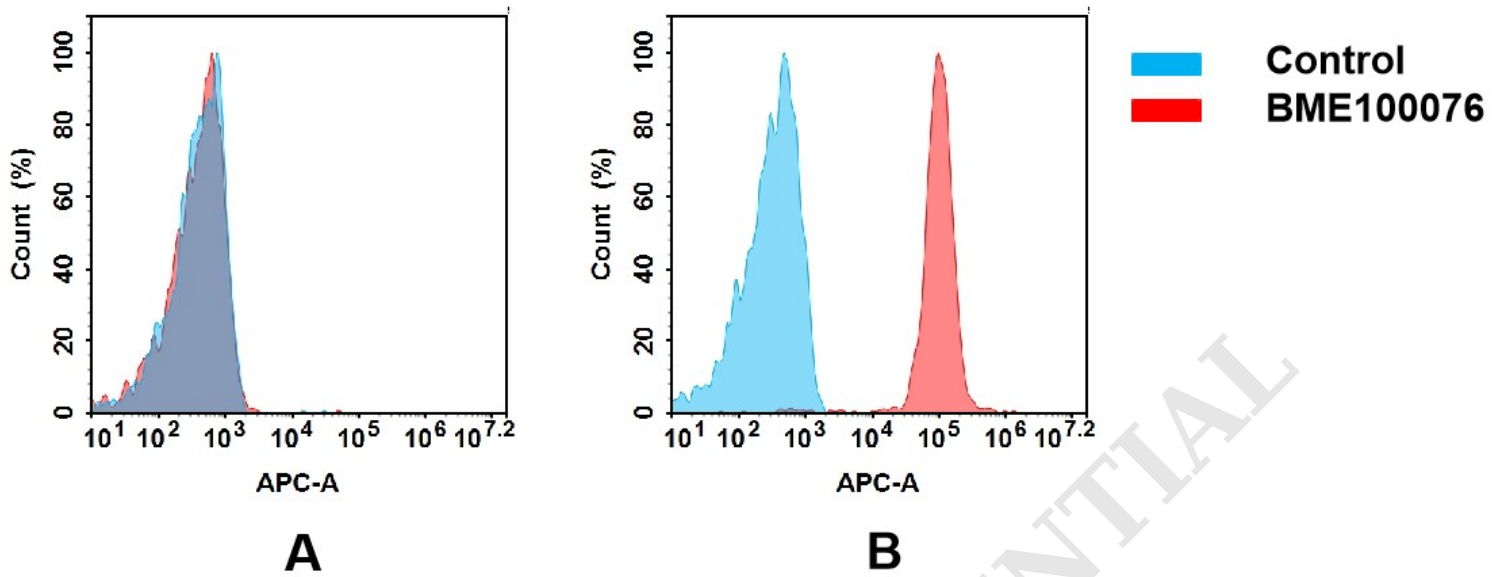


Figure 3. Flow cytometry analysis of antigen binding of anti-human CD47 mAb(BME100076).

(A) BME100076 does not bind to CHO-S cells that do not express CD47.

(B) A clear peak shift of BME100076 was seen compared to the control when incubated with CD47-expressing 8226 cells, indicating strong binding of BME100076 to CD47. Antibodies were incubated at 5 $\mu\text{g}/\text{mL}$.

