

## PRODUCT INFORMATION

<b>Clone ID</b>	<b>Warning:</b> Undefined variable \$hasAttributeValueDescription in C:\wwwroot\mirror.dimabio.com\wp-content\plugins\woocommerce-print-products\publicclass-woocommerce-print-products-public.php on line 2806 DM118
<b>Target</b>	CD7
<b>Synonyms</b>	CD7;GP40;TP41;LEU-9;Tp40
<b>Host Species</b>	Rabbit
<b>Description</b>	Anti-CD7 antibody(DM118); Rabbit mAb
<b>Delivery</b>	In Stock
<b>Uniprot ID</b>	P09564
<b>IgG type</b>	Rabbit IgG
<b>Clonality</b>	Monoclonal
<b>Reactivity</b>	Human
<b>Applications</b>	ELISA; Flow Cyt
<b>Recommended Dilutions</b>	ELISA 1:5000-10000; Flow Cyt 1:100
<b>Purification</b>	Purified from cell culture supernatant by affinity chromatography
<b>Formulation &amp; Reconstitution</b>	Lyophilized from sterile PBS, pH 7.4. Normally 5% - 8% trehalose is added as protectants before lyophilization. Please see Certificate of Analysis for specific instructions of reconstitution.
<b>Yefei Storage</b>	Store at -20°C to -80°C for 12 months in lyophilized form. After reconstitution, if not intended for use within a month, aliquot and store at -80°C (Avoid repeated freezing and thawing). Lyophilized proteins are shipped at ambient temperature.
<b>Background</b>	This gene encodes a transmembrane protein which is a member of the immunoglobulin superfamily. This protein is found on thymocytes and mature T cells. It plays an essential role in T-cell interactions and also in T-cell:B-cell interaction during early lymphoid development.
<b>Usage</b>	Research use only
<b>Conjugate</b>	Unconjugated
<b>DIMA Disclaimer</b>	All DIMA recombinant antibodies are genuinely generated by DIMA Biotech. They are all under patent application. Any protein sequencing or reverse engineering attempt is prohibited. We are actively scrutinizing all patent application to ensure no IP infringement.

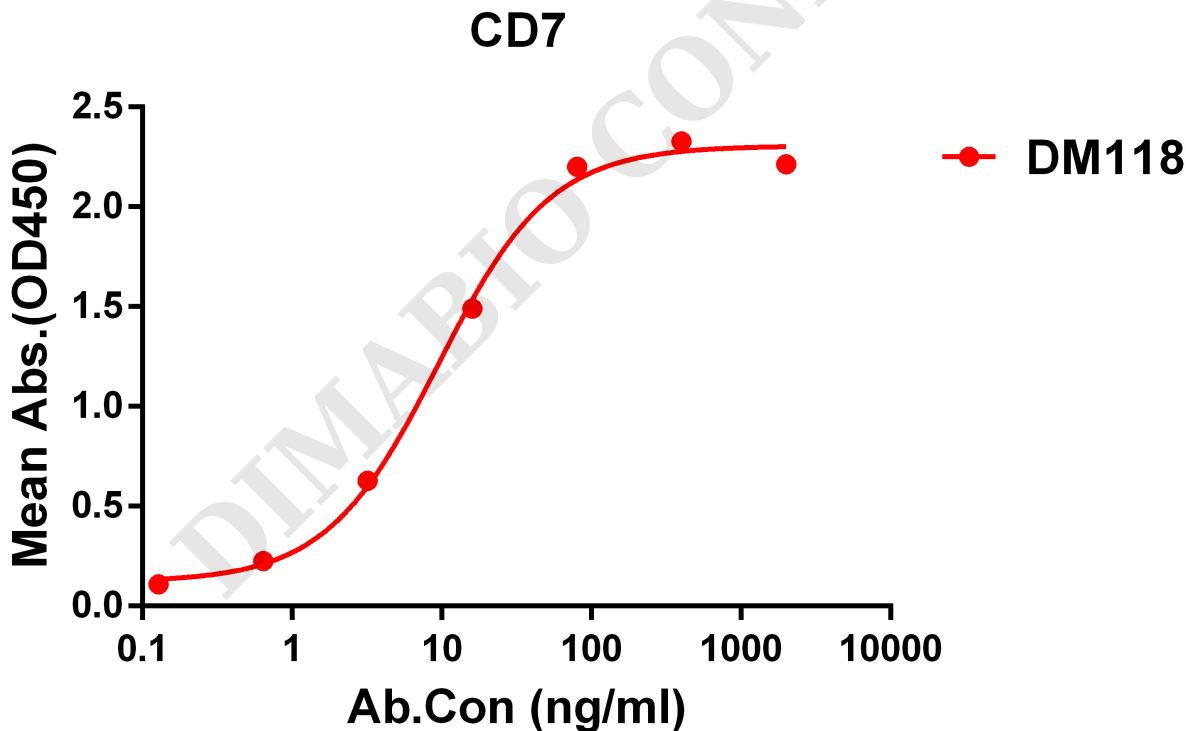


Figure 1. ELISA plate pre-coated by 1 µg/ml (100 µl/well) Human CD7 protein, mFc-His tagged protein PME100464 can bind Rabbit anti-CD7 monoclonal antibody (clone: DM118) in a linear range of 0.2-60 ng/ml.



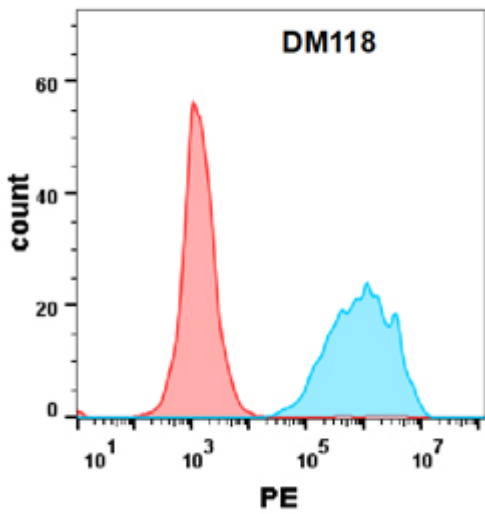


Figure 2. Flow cytometry analysis with Anti-CD7 (DM118) on HEK293 cells transfected with human CD7 (Blue histogram) or HEK293 transfected with irrelevant protein (Red histogram).

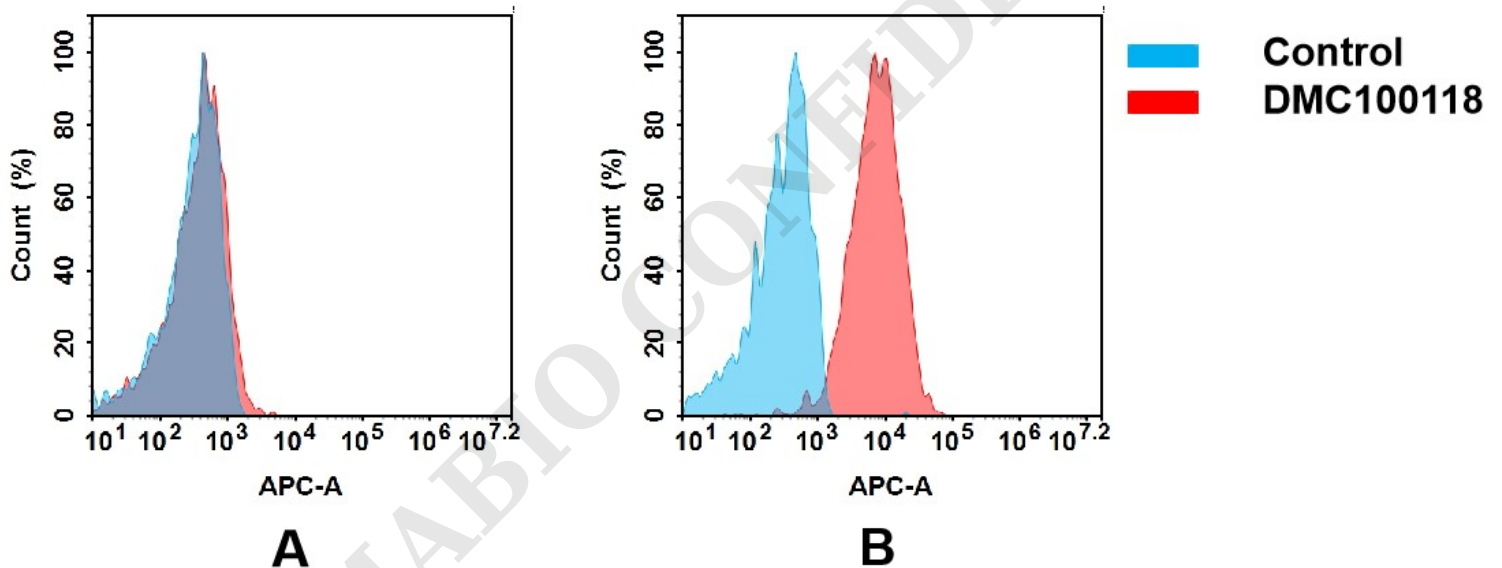


Figure 3. Flow cytometry analysis of antigen binding of rabbit anti-human CD7 mAb(DME100118).

(A) DME100118 does not bind to 293T cells that do not express CD7.

(B) A clear peak shift of DME100118 was seen compared to the control when incubated with CD7-expressing Jurkat cells, indicating strong binding of DME100118 to CD7. Antibodies were incubated at 10 µg/mL.

