

PRODUCT INFORMATION

Common Name	Warning: Undefined variable \$hasAttribute\$ in C:\wwwroot\mirror\dimabio.com\wp-content\plugins\woocommerce-print-products\publicclass-woocommerce-print-products-public.php on line 2806 ARB102
Conjugate	Unconjugated
Synonyms	Cadherin-17
Applications	ELISA, Flow Cyt
Recommended Dilutions	ELISA 1:5000-10000, Flow Cyt 1:100
Formulation & Reconstitution	Lyophilized from sterile PBS, pH 7.4. Normally 5% - 8% trehalose is added as protectants before lyophilization. Please see Certificate of Analysis for specific instructions of reconstitution.
Host Species	Humanized
IgG type	Human IgG1 - kappa
Reactivity	Human
Target	CDH17
Uniprot ID	Q12864
Description	Anti-CDH17(ARB102 biosimilar) mAb
Delivery	In Stock
Yefei Storage	Store at -20°C to -80°C for 12 months in lyophilized form. After reconstitution, if not intended for use within a month, aliquot and store at -80°C (Avoid repeated freezing and thawing). Lyophilized antibodies are shipped at ambient temperature.
Background	Research grade biosimilar. Not for use in therapeutic or diagnostic procedures for humans or animals.
Usage	Research use only

Anti-CDH17(ARB102 biosimilar) mAb ELISA

0.2 µg of Human CDH17, His tagged protein per well

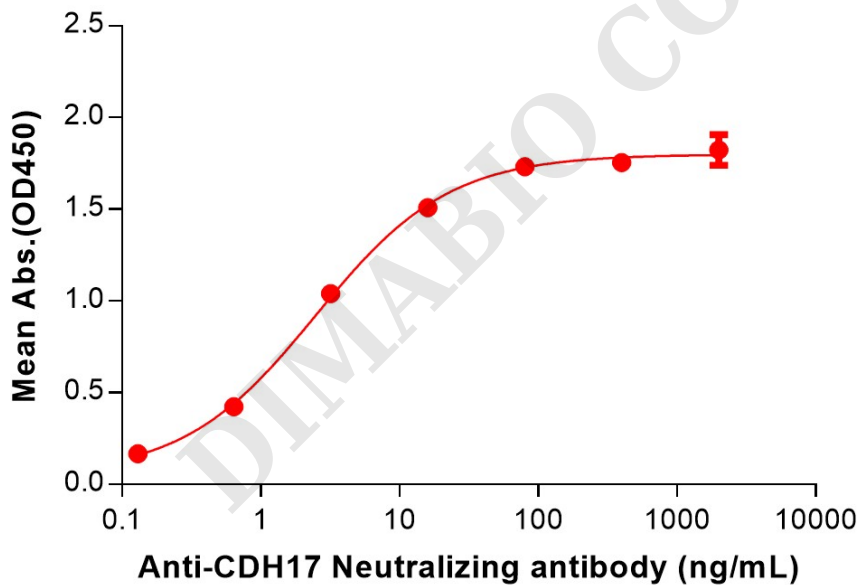


Figure 1. ELISA plate pre-coated by 2 µg/mL (100 µL/well) Human CDH17 Protein, His Tag (PME100801) can bind Anti-CDH17(ARB102 biosimilar) mAb (BME100198) in a linear range of 0.64–16 ng/mL.



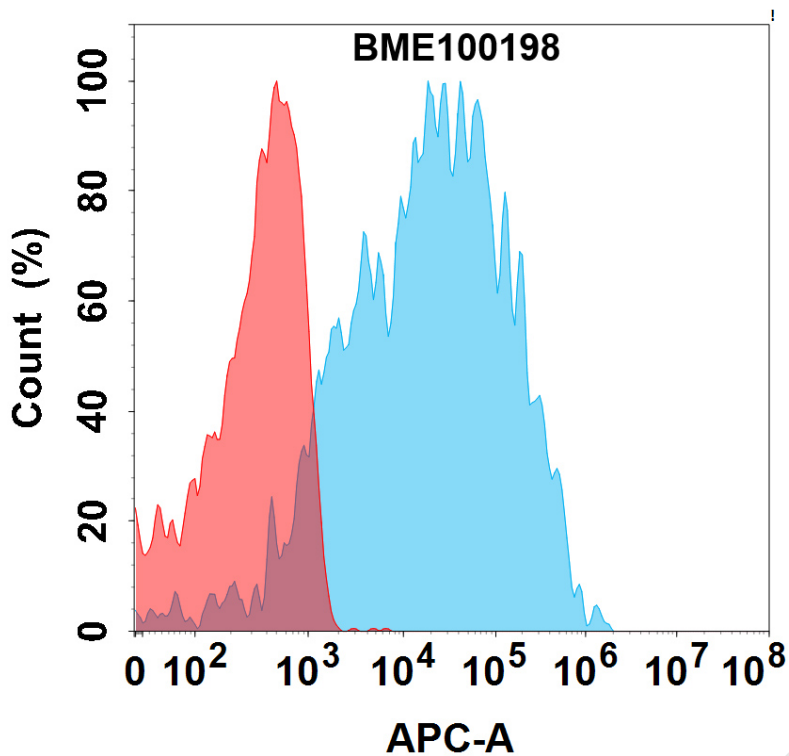


Figure 2. Flow cytometry analysis with 1 μ g/mL Anti-CDH17(ARB102 biosimilar) mAb (BME100198) on HEK293 cells transfected with Human CDH17 protein (Blue histogram) or HEK293 transfected with irrelevant protein (Red histogram).

Anti-CDH17(ARB102 biosimilar) mAb ELISA

0.05 μ g of Cynomolgus CDH17, His tagged protein per well

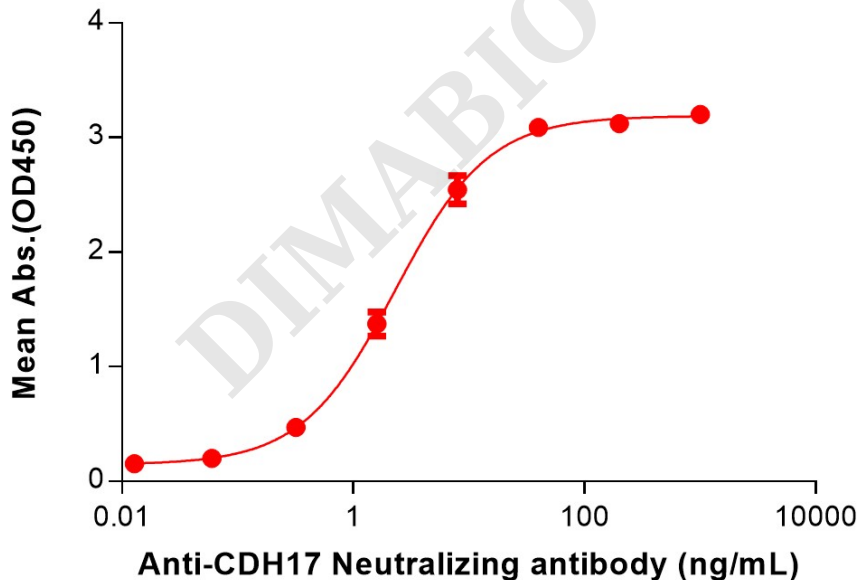


Figure 3. ELISA plate pre-coated by 2 μ g/mL (100 μ L/well) Cynomolgus CDH17 Protein, His Tag (PME-C100029) can bind Anti-CDH17(ARB102 biosimilar) mAb (BME100198) in a linear range of 3.20–400 ng/mL.

