

## PRODUCT INFORMATION

<b>Common Name</b>	<b>Warning:</b> Undefined variable \$hasAttributeValueDescription in C:\wwwroot\mirror\dimabio.com\wp-content\plugins\woocommerce\print-products\public\class-woocommerce-print-products-public.php on line 2806 CDH17-ADC-653-H43, Unconjugated mAb
<b>Conjugate</b>	Unconjugated
<b>Synonyms</b>	Cadherin-17
<b>Applications</b>	ELISA, Flow Cyt
<b>Recommended Dilutions</b>	ELISA 1:5000-10000, Flow Cyt 1:100
<b>Formulation &amp; Reconstitution</b>	Lyophilized from sterile PBS, pH 7.4. Normally 5 % - 8% trehalose is added as protectants before lyophilization. Please see Certificate of Analysis for specific instructions of reconstitution.
<b>Host Species</b>	Humanized
<b>IgG type</b>	Human IgG1 - kappa
<b>Reactivity</b>	Human
<b>Target</b>	CDH17
<b>Uniprot ID</b>	Q12864
<b>Description</b>	Anti-CDH17(TORL-3-600 biosimilar) mAb
<b>Delivery</b>	In Stock
<b>Yefei_Storage</b>	Store at -20°C to -80°C for 12 months in lyophilized form. After reconstitution, if not intended for use within a month, aliquot and store at -80°C (Avoid repeated freezing and thawing). Lyophilized antibodies are shipped at ambient temperature.
<b>Background</b>	Research grade biosimilar. Not for use in therapeutic or diagnostic procedures for humans or animals. Our unconjugated biosimilar monoclonal antibodies (mAbs) are based on the sequences outlined in relevant patents or scientific publications. These antibodies are in their native, unconjugated form, meaning they do not contain any payload or therapeutic agent attached. They are designed for use in research and development, and their performance has been tested as standalone molecules through comprehensive QC tests.
<b>Usage</b>	Research use only

## Anti-CDH17(TORL-3-600 biosimilar) mAb ELISA

0.2 µg of Human CDH17, His tagged protein per well

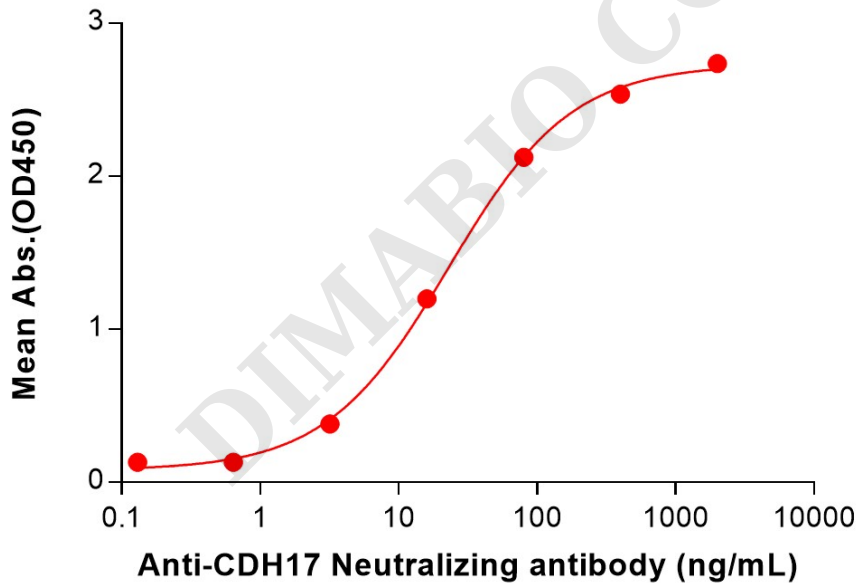


Figure 1. ELISA plate pre-coated by 2 µg/mL (100 µL/well) Human CDH17 Protein, His Tag (PME100801) can bind Anti-CDH17(TORL-3-600 biosimilar) mAb (BME100233) in a linear range of 3.20-400 ng/mL.



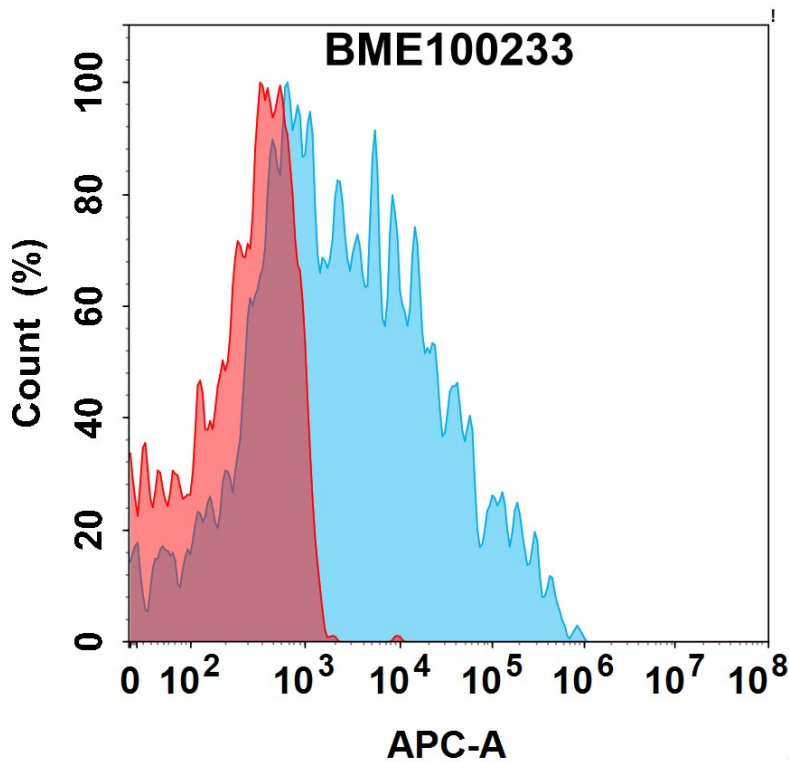


Figure 2. Flow cytometry analysis with 1 $\mu$ g/mL Anti-CDH17(TORL-3-600 biosimilar) mAb (BME100233) on HEK293 cells transfected with Human CDH17 protein (Blue histogram) or HEK293 transfected with irrelevant protein (Red histogram).

### Anti-CDH17(TORL-3-600 biosimilar) mAb ELISA

0.2  $\mu$ g of Human CDH17, hFc tagged protein per well

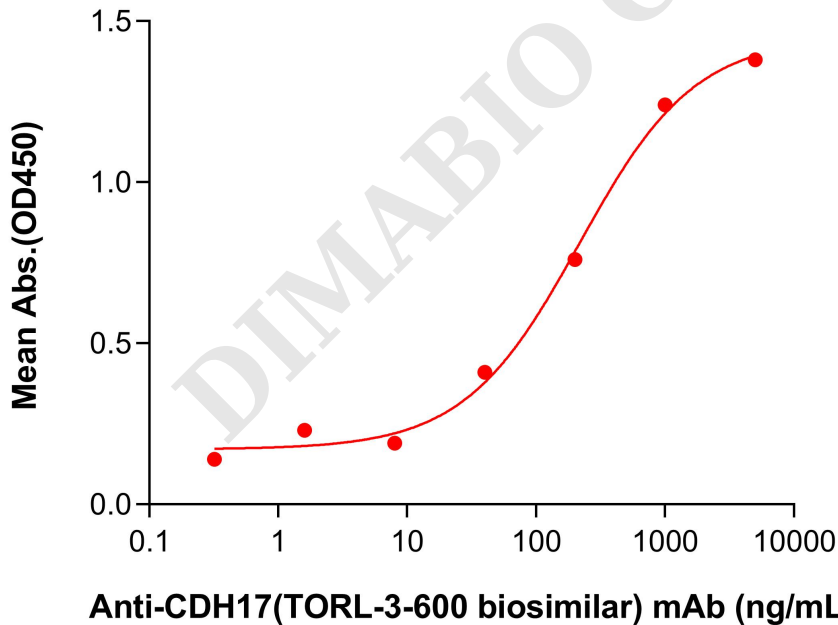


Figure 3. ELISA plate pre-coated by 2  $\mu$ g/mL (100  $\mu$ L/well) Human CDH17 Protein, hFc Tag (PME101841) can bind Anti-CDH17(TORL-3-600 biosimilar) mAb (BME100233) in a linear range of 40–1000 ng/mL. In order to specifically detect BME100233, mouse anti-human Fab-specific antibody was used as detection antibody.

