

PRODUCT INFORMATION

Clone ID	6A10
Target	CDH3
Synonyms	CDHP;HJMD;PCAD
Host Species	Rabbit
Description	Anti-CDH3 antibody(6A10); IgG1 Chimeric mAb
Delivery	In Stock
Uniprot ID	P22223
IgG type	Rabbit/Human Fc chimeric IgG1
Clonality	Monoclonal
Reactivity	Human
Applications	Flow Cyt
Recommended Dilutions	Flow Cyt 1/100
Purification	Purified from cell culture supernatant by affinity chromatography
Formulation & Reconstitution	Lyophilized from sterile PBS, pH 7.4. Normally 5 % - 8% trehalose is added as protectants before lyophilization. Please see Certificate of Analysis for specific instructions of reconstitution.
Storage & Shipping	Store at -20°C to -80°C for 12 months in lyophilized form. After reconstitution, if not intended for use within a month, aliquot and store at -80°C (Avoid repeated freezing and thawing). Lyophilized proteins are shipped at ambient temperature.
Background	This gene encodes a classical cadherin of the cadherin superfamily. Alternative splicing results in multiple transcript variants, at least one of which encodes a preproprotein that is proteolytically processed to generate the mature glycoprotein. This calcium-dependent cell-cell adhesion protein is comprised of five extracellular cadherin repeats, a transmembrane region and a highly conserved cytoplasmic tail. This gene is located in a gene cluster in a region on the long arm of chromosome 16 that is involved in loss of heterozygosity events in breast and prostate cancer. In addition, aberrant expression of this protein is observed in cervical adenocarcinomas. Mutations in this gene are associated with hypotrichosis with juvenile macular dystrophy and ectodermal dysplasia, ectrodactyly, and macular dystrophy syndrome (EEMS). [provided by RefSeq, Nov 2015]
Usage	Research use only
Conjugate	Unconjugated
DIMA Disclaimer	All DIMA recombinant antibodies are genuinely generated by DIMA Biotech. They are all under patent application. Any protein sequencing or reverse engineering attempt is prohibited. We are actively scrutinizing all patent application to ensure no IP infringement.



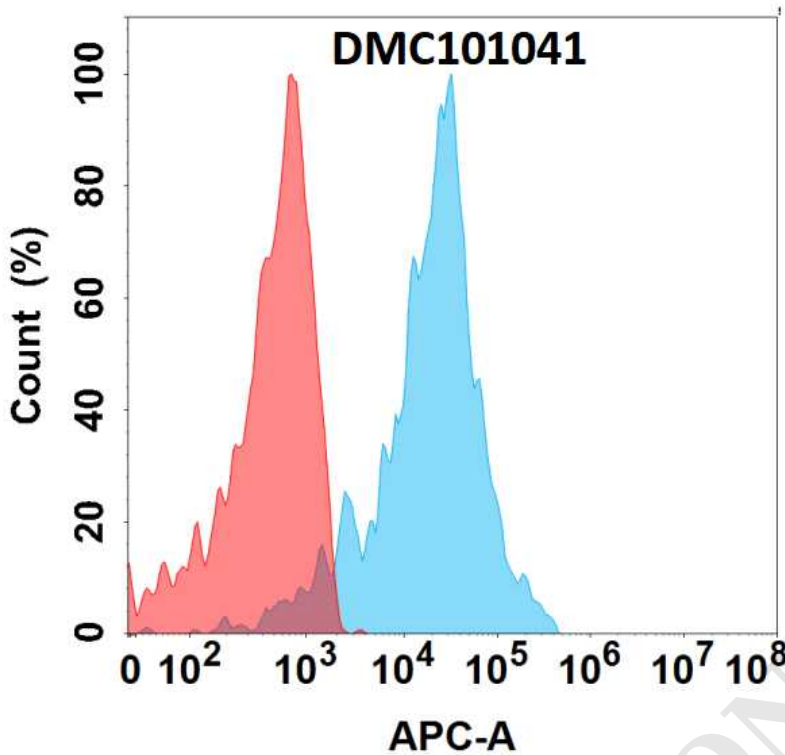


Figure 1. Flow cytometry analysis with Anti-CDH3 (6A10) mAb on Expi293 cells transfected with human CDH3 (Blue histogram) or Expi293 transfected with irrelevant protein (Red histogram).

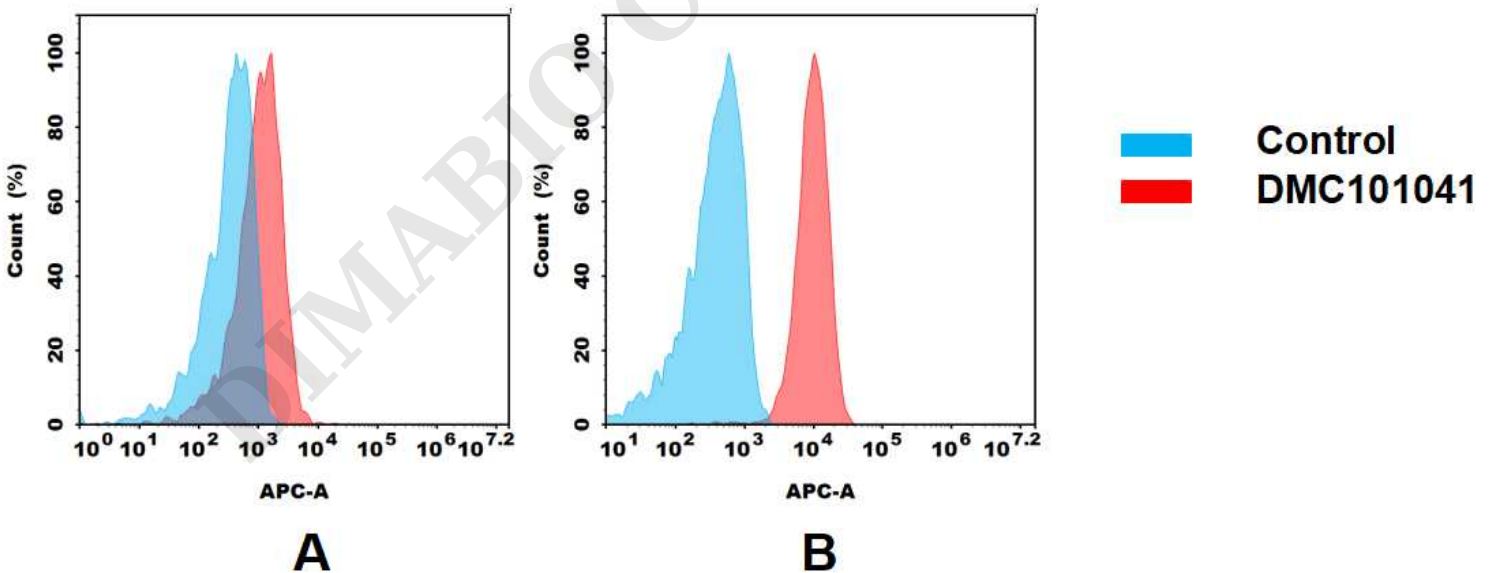


Figure 2. Flow cytometry analysis of antigen binding of anti-human CDH3 mAb(DMC101041).
 (A) DMC101041 does weakly bind to Jurkat cells that has a Low level expression of CDH3.
 (B) A clear peak shift of DMC101041 was seen compared to the control when incubated with CDH3-expressing A431 cells, indicating strong binding of DMC100280 to CDH3. Antibodies were incubated at 10 µg/mL.

