

## PRODUCT INFORMATION

<b>Common Name</b>	<b>Warning:</b> Undefined variable \$hasAttribute\$ in C:\wwwroot\mirror\dimabio.com\wp-content\plugins\woocommerce-print-products\public\class-woocommerce-print-products-public.php on line 2806 DS-6000A_DS6000A
<b>Conjugate</b>	Unconjugated
<b>Synonyms</b>	CADH6;K-cadherin
<b>Applications</b>	ELISA, Flow Cyt
<b>Recommended Dilutions</b>	ELISA 1:5000-10000, Flow Cyt 1:100
<b>Formulation &amp; Reconstitution</b>	Lyophilized from sterile PBS, pH 7.4. Normally 5% - 8% trehalose is added as protectants before lyophilization. Please see Certificate of Analysis for specific instructions of reconstitution.
<b>Host Species</b>	Humanized
<b>IgG type</b>	Human IgG1(K214R) - kappa
<b>Reactivity</b>	Human
<b>Target</b>	CDH6
<b>Uniprot ID</b>	P55285
<b>Description</b>	Anti-CDH6(raludotatug biosimilar) mAb
<b>Delivery</b>	In Stock
<b>Yefei Storage</b>	Store at -20°C to -80°C for 12 months in lyophilized form. After reconstitution, if not intended for use within a month, aliquot and store at -80°C (Avoid repeated freezing and thawing). Lyophilized antibodies are shipped at ambient temperature.
<b>Background</b>	Research grade biosimilar. Not for use in therapeutic or diagnostic procedures for humans or animals.
<b>Usage</b>	Research use only

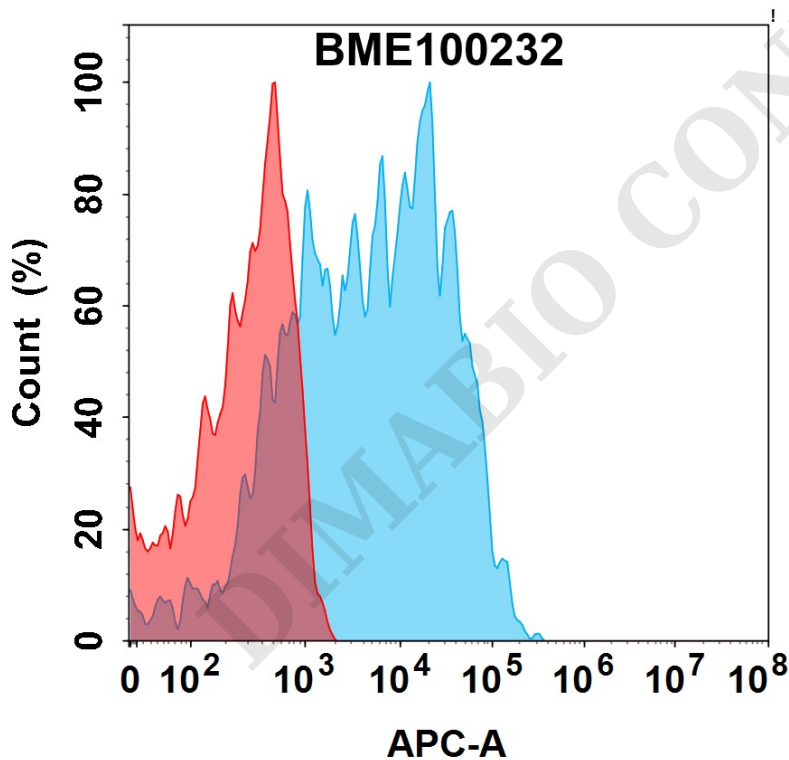


Figure 1. Flow cytometry analysis with 15µg/mL Anti-CDH6(raludotatug biosimilar) mAb (BME100232) on HEK293 cells transfected with Human CDH6 protein (Blue histogram) or HEK293 transfected with irrelevant protein (Red histogram).



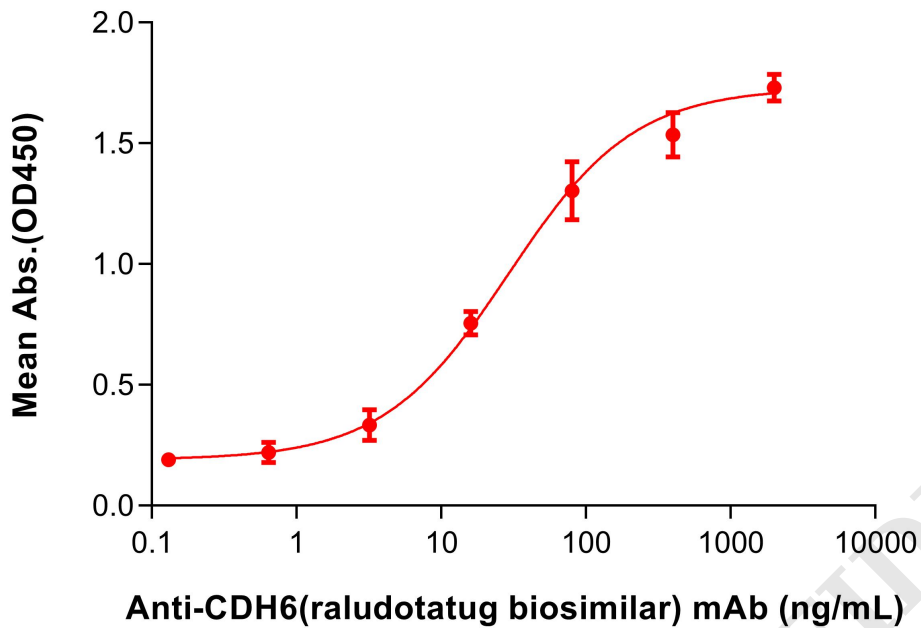
**Anti-CDH6(raludotatug biosimilar) mAb ELISA**0.2  $\mu\text{g}$  of Human CDH6, His tagged protein per well

Figure 2. ELISA plate pre-coated by 2  $\mu\text{g}/\text{mL}$  (100  $\mu\text{L}/\text{well}$ ) Human CDH6 Protein, His Tag (PME101111) can bind Anti-CDH6(raludotatug biosimilar) mAb (BME100232) in a linear range of 3.2-400 ng/mL.

