

## PRODUCT INFORMATION

<b>Common Name</b>	<b>Warning:</b> Undefined variable \$hasAttributeValueDescription in C:\wwwroot\mirror\dimabio.com\wp-content\plugins\woocommerce-print-products\public\class-woocommerce-print-products-public.php on line 2806 IMMU-130, hMN-14-SN-38, hMN-14-SN-38 ADC, hMN14-CL-SN-38, hMN14-SN-38, Unconjugated mAb
<b>Conjugate</b>	Unconjugated
<b>Synonyms</b>	CEACAM-5;CD66e;CEA;Meconium antigen 100
<b>Applications</b>	ELISA; Flow Cyt
<b>Recommended Dilutions</b>	ELISA 1:5000-10000
<b>Formulation &amp; Reconstitution</b>	Lyophilized from sterile PBS, pH 7.4. Normally 5 % - 8% trehalose is added as protectants before lyophilization. Please see Certificate of Analysis for specific instructions of reconstitution.
<b>Host Species</b>	Humanized
<b>IgG type</b>	Human IgG1 - kappa
<b>Reactivity</b>	Human
<b>Target</b>	CEACAM5
<b>Uniprot ID</b>	P06731
<b>Description</b>	Anti-CEACAM5 (labetuzumab biosimilar) mAb
<b>Delivery</b>	In Stock
<b>Yefei_Storage</b>	Store at -20°C to -80°C for 12 months in lyophilized form. After reconstitution, if not intended for use within a month, aliquot and store at -80°C (Avoid repeated freezing and thawing). Lyophilized proteins are shipped at ambient temperature.
<b>Background</b>	Research grade biosimilar. Not for use in therapeutic or diagnostic procedures for humans or animals. Our unconjugated biosimilar monoclonal antibodies (mAbs) are based on the sequences outlined in relevant patents or scientific publications. These antibodies are in their native, unconjugated form, meaning they do not contain any payload or therapeutic agent attached. They are designed for use in research and development, and their performance has been tested as standalone molecules through comprehensive QC tests.
<b>Usage</b>	Research use only

## Anti-CEACAM5 (labetuzumab biosimilar) mAb ELISA

0.2 µg of CEACAM5, His Tagged protein per well

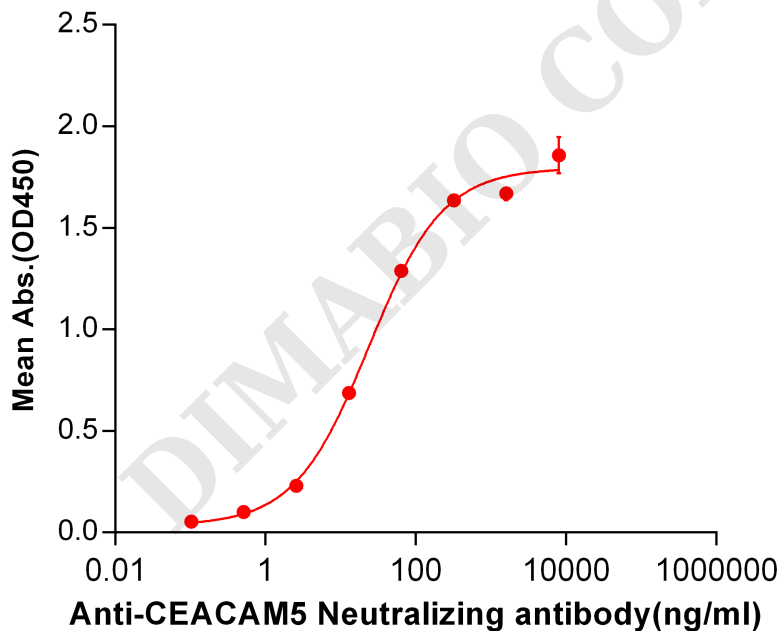


Figure 1. ELISA plate pre-coated by 2 µg/ml (100 µl/well) Human CEACAM5, His tagged protein PME100071 can bind Anti-CEACAM5 Neutralizing antibody(BME100035) in a linear range of 2.56-320 ng/ml.



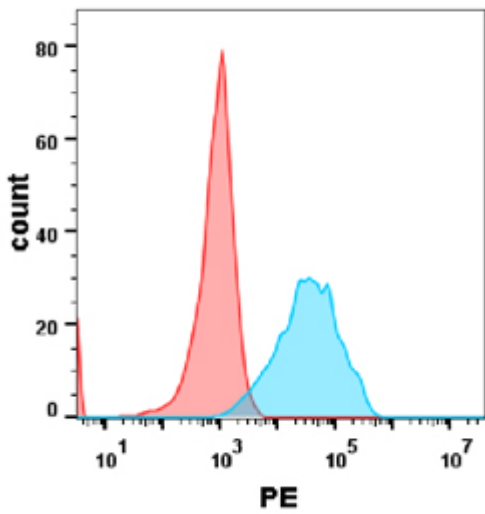


Figure 2. Flow cytometry analysis with Anti-CEACAM5 (labetuzumab ) on HEK293 cells transfected with human CEACAM5 (Blue histogram) or HEK293 transfected with irrelevant protein(Red histogram).

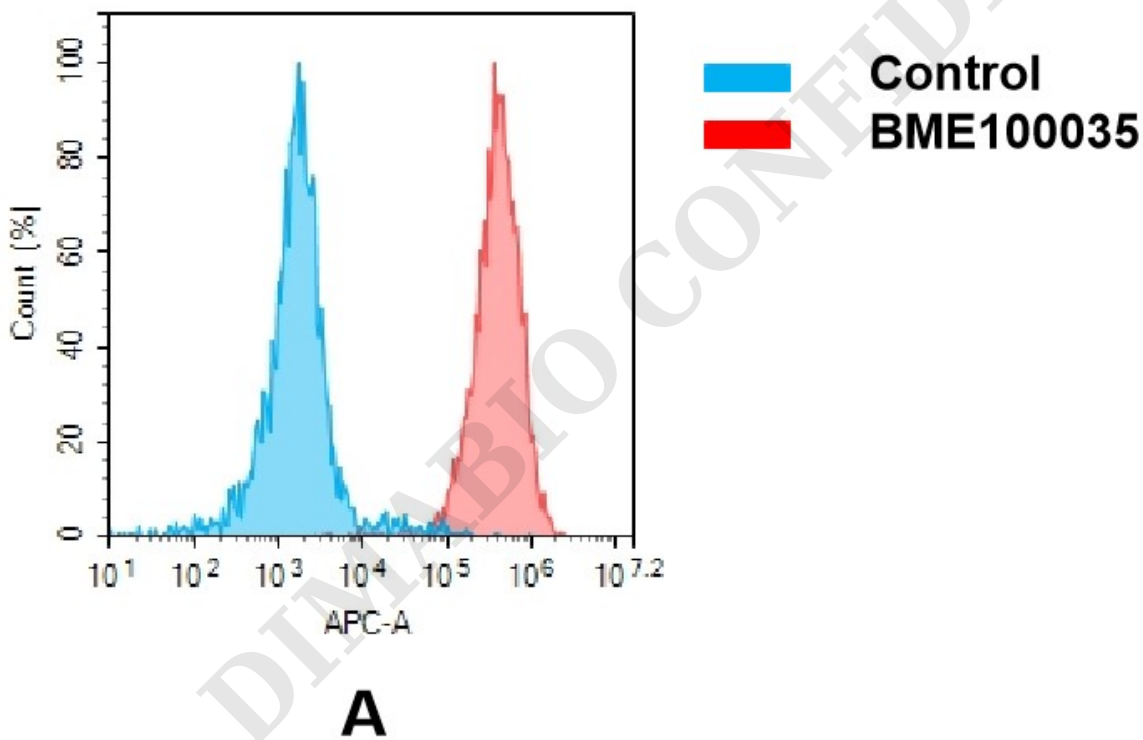


Figure 3. Flow cytometry analysis of antigen binding of anti-human CEACAM5 mAb(BME100035). (A) A clear peak shift of BME100035 was seen compared to the control when incubated with CEACAM5-expressing MKN45 cells, indicating strong binding of BME100035 to CEACAM5. Antibodies were incubated at 2  $\mu$ g/mL.

