

PRODUCT INFORMATION

Clone ID	Warning: Undefined variable \$hasAttributeValueDescription in C:\wwwroot\mirror\dimabio.com\wp-content\plugins\woocommerce-print-products\publicclass-woocommerce-print-products-public.php on line 2806 DMC685
Target	CEACAM6
Synonyms	CD66c; CEAL; NCA
Host Species	Rabbit
Description	Anti-CEACAM6 antibody(DMC685); IgG1 Chimeric mAb
Delivery	In Stock
Uniprot ID	P40199
IgG type	Rabbit/Human Fc chimeric IgG1
Clonality	Monoclonal
Reactivity	Human
Applications	Flow Cyt
Recommended Dilutions	Flow Cyt 1:100
Purification	Purified from cell culture supernatant by affinity chromatography
Formulation & Reconstitution	Lyophilized from sterile PBS, pH 7.4. Normally 5% - 8% trehalose is added as protectants before lyophilization. Please see Certificate of Analysis for specific instructions of reconstitution.
Yefei Storage	Store at -20°C to -80°C for 12 months in lyophilized form. After reconstitution, if not intended for use within a month, aliquot and store at -80°C (Avoid repeated freezing and thawing). Lyophilized proteins are shipped at ambient temperature.
Background	This gene encodes a protein that belongs to the carcinoembryonic antigen (CEA) family whose members are glycosyl phosphatidyl inositol (GPI) anchored cell surface glycoproteins. Members of this family play a role in cell adhesion and are widely used as tumor markers in serum immunoassay determinations of carcinoma. This gene affects the sensitivity of tumor cells to adenovirus infection. The protein encoded by this gene acts as a receptor for adherent-invasive E. coli adhesion to the surface of ileal epithelial cells in patients with Crohn's disease. This gene is clustered with genes and pseudogenes of the cell adhesion molecules subgroup of the CEA family on chromosome 19. [provided by RefSeq; Apr 2014]
Usage	Research use only
Conjugate	Unconjugated
DIMA Disclaimer	All DIMA recombinant antibodies are genuinely generated by DIMA Biotech. They are all under patent application. Any protein sequencing or reverse engineering attempt is prohibited. We are actively scrutinizing all patent application to ensure no IP infringement.

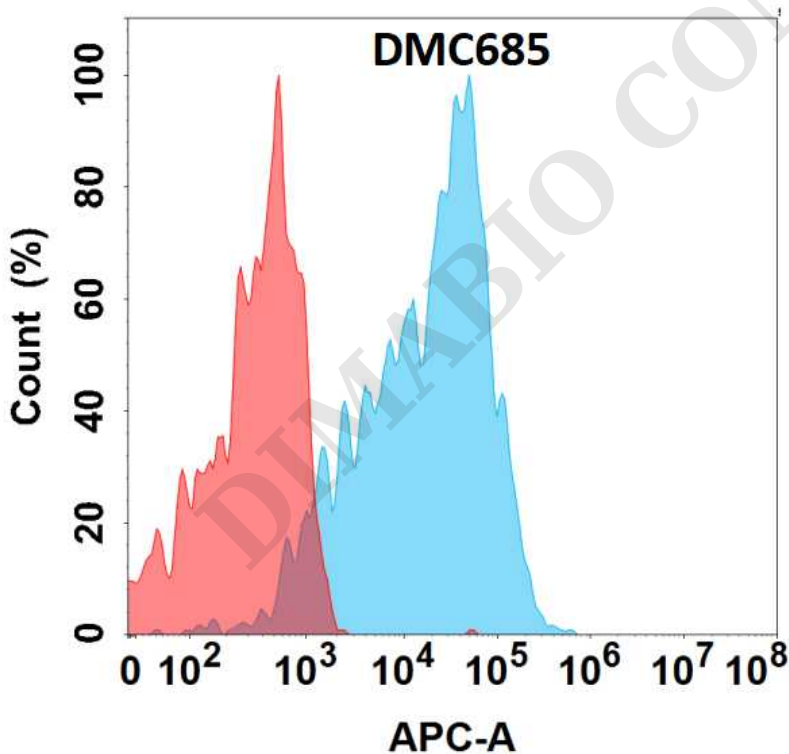


Figure 1. Flow cytometry analysis with Anti-CEACAM6(DMC685) on HEK293 cells transfected with human CEACAM6(Blue histogram) or HEK293 transfected with irrelevant protein (Red histogram).



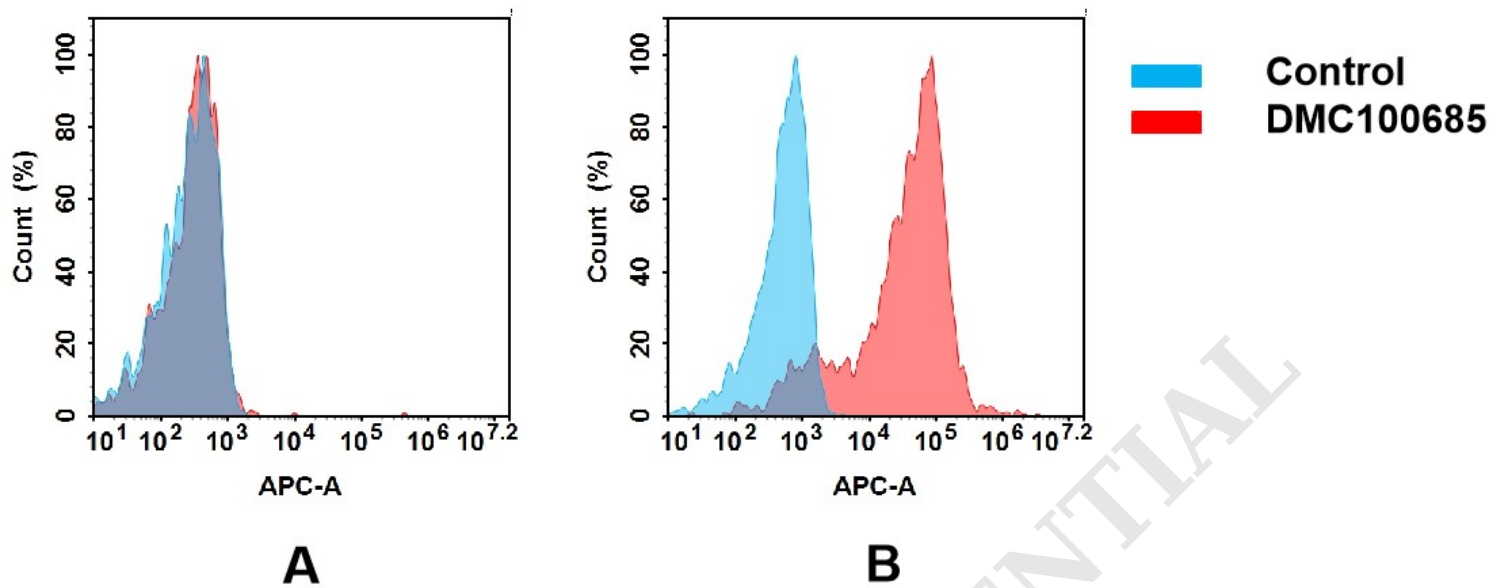


Figure 2. Flow cytometry analysis of antigen binding of anti-human CEACAM6 mAb(DMC100685).

(A) DMC100685 does not bind to Jurkat cells that do not express CEACAM6.

(B) A clear peak shift of DMC100685 was seen compared to the control when incubated with CEACAM6-expressing SNU-5 cells, indicating strong binding of DMC100685 to CEACAM6. Antibodies were incubated at 5 µg/ml.

DIMABIO CONFIDENTIAL

