

PRODUCT INFORMATION

Common Name	GC-182,IMAB-362,IMAB362,claudiximab
Synonyms	GC-182;MAB-362;MAB362;laudiximab
Applications	Flow Cyt
Recommended Dilutions	Flow Cyt 1:100
Formulation & Reconstitution	Lyophilized from sterile PBS, pH 7.4. Normally 5% - 8% trehalose is added as protectants before lyophilization. Please see Certificate of Analysis for specific instructions of reconstitution.
Host Species	Chimeric
IgG type	IgG1
Reactivity	Human
Target	CLDN18.2
Uniprot ID	P56856
Description	Anti-CLDN18.2 (zolbetuximab biosimilar) mAb
Delivery	In Stock
Storage & Shipping	Store at -20°C to -80°C for 12 months in lyophilized form. After reconstitution, if not intended for use within a month, aliquot and store at -80°C (Avoid repeated freezing and thawing). Lyophilized proteins are shipped at ambient temperature.
Background	Research grade biosimilar. Not for use in therapeutic or diagnostic procedures for humans or animals.
Usage	Research use only
Conjugate	Unconjugated
DIMA Disclaimer	All DIMA recombinant antibodies are genuinely generated by DIMA Biotech. They are all under patent application. Any protein sequencing or reverse engineering attempt is prohibited. We are actively scrutinizing all patent application to ensure no IP infringement.

DIMA BIO PHARMACEUTICAL



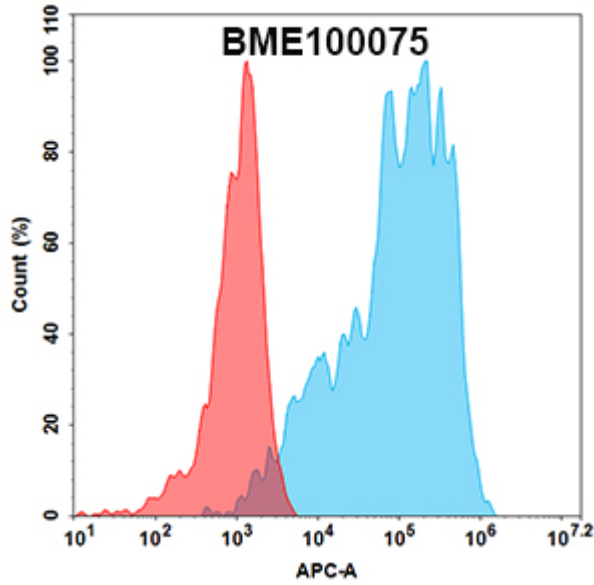


Figure 1. Flow cytometry analysis with Anti-CLDN18.2 mAb 1 μ g/ml(zolbetuximab,BME100075) on Expi293 cells transfected with human CLDN18.2 (Blue histogram)or Expi293 transfected with CLDN18.1 (Red histogram).

DIMABIO CONFIDENTIAL

