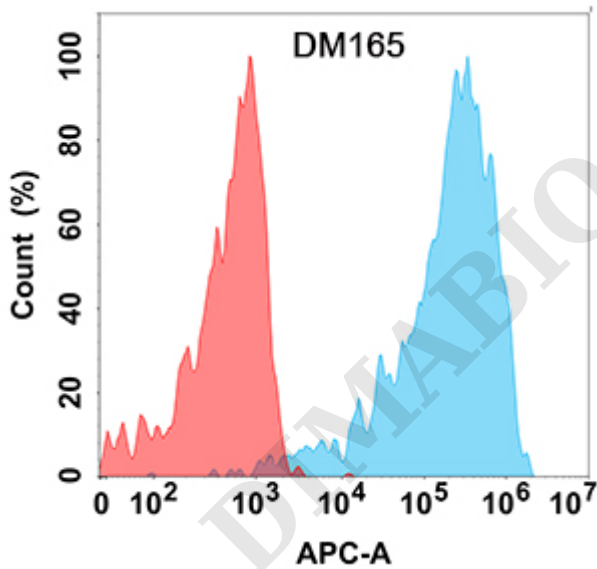


## PRODUCT INFORMATION

<b>Clone ID</b>	<b>Warning:</b> Undefined variable \$hasAttributeValueDescription in C:\wwwroot\mirror.dimabio.com\wp-content\plugins\woocommerce-print-products\publicclass-woocommerce-print-products-public.php on line 2806 DM165
<b>Target</b>	CLEC12A
<b>Synonyms</b>	CLEC12A;M1CL;CLL-1;CLL1;DCAL2;DCAL-2;CD371
<b>Host Species</b>	Rabbit
<b>Description</b>	Anti-CLEC12A antibody(DM165); Rabbit mAb
<b>Delivery</b>	In Stock
<b>Uniprot ID</b>	Q5QG29
<b>IgG type</b>	Rabbit IgG
<b>Clonality</b>	Monoclonal
<b>Reactivity</b>	Human
<b>Applications</b>	ELISA; Flow Cyt
<b>Recommended Dilutions</b>	ELISA 1:5000-10000; Flow Cyt 1:100
<b>Purification</b>	Purified from cell culture supernatant by affinity chromatography
<b>Formulation &amp; Reconstitution</b>	Lyophilized from sterile PBS, pH 7.4. Normally 5% - 8% trehalose is added as protectants before lyophilization. Please see Certificate of Analysis for specific instructions of reconstitution.
<b>Yefel Storage</b>	Store at -20°C to -80°C for 12 months in lyophilized form. After reconstitution, if not intended for use within a month, aliquot and store at -80°C (Avoid repeated freezing and thawing). Lyophilized proteins are shipped at ambient temperature.
<b>Background</b>	This gene encodes a member of the C-type lectin:C-type lectin-like domain (CTL:CTLD) superfamily. Members of this family share a common protein fold and have diverse functions, such as cell adhesion; cell-cell signaling; glycoprotein turnover; and roles in inflammation and immune response. The protein encoded by this gene is a negative regulator of granulocyte and monocyte function. Several alternatively spliced transcript variants of this gene have been described; but the full-length nature of some of these variants has not been determined. This gene is closely linked to other CTL:CTLD superfamily members in the natural killer gene complex region on chromosome 12p13.
<b>Usage</b>	Research use only
<b>Conjugate</b>	Unconjugated
<b>DIMA Disclaimer</b>	All DIMA recombinant antibodies are genuinely generated by DIMA Biotech. They are all under patent application. Any protein sequencing or reverse engineering attempt is prohibited. We are actively scrutinizing all patent application to ensure no IP infringement.



**Figure 1.** Flow cytometry analysis with Anti-CLEC12A (DM165) on HEK293 cells transfected with human CLEC12A (Blue histogram) or HEK293 transfected with irrelevant protein (Red histogram).

