

PRODUCT INFORMATION

Clone ID	DMC469
Target	CLEC9A
Synonyms	CD370; DNDR-1; DNDR1; UNQ9341
Host Species	Rabbit
Description	Anti-CLEC9A antibody(DMC469); IgG1 Chimeric mAb
Delivery	In Stock
Uniprot ID	Q6UXN8
IgG type	Rabbit/Human Fc chimeric IgG1
Clonality	Monoclonal
Reactivity	Human
Applications	Flow Cyt
Recommended Dilutions	Flow Cyt 1:100
Purification	Purified from cell culture supernatant by affinity chromatography
Formulation & Reconstitution	Lyophilized from sterile PBS, pH 7.4. Normally 5% - 8% trehalose is added as protectants before lyophilization. Please see Certificate of Analysis for specific instructions of reconstitution.
Storage & Shipping	Store at -20°C to -80°C for 12 months in lyophilized form. After reconstitution, if not intended for use within a month, aliquot and store at -80°C (Avoid repeated freezing and thawing). Lyophilized proteins are shipped at ambient temperature.
Background	CLEC9A is a group V C-type lectin-like receptor (CTLR) that functions as an activation receptor and is expressed on myeloid lineage cells (Huysamen et al.; 2008 [PubMed 18408006]).[supplied by OMIM; Aug 2008]
Usage	Research use only
Conjugate	Unconjugated
DIMA Disclaimer	All DIMA recombinant antibodies are genuinely generated by DIMA Biotech. They are all under patent application. Any protein sequencing or reverse engineering attempt is prohibited. We are actively scrutinizing all patent application to ensure no IP infringement.



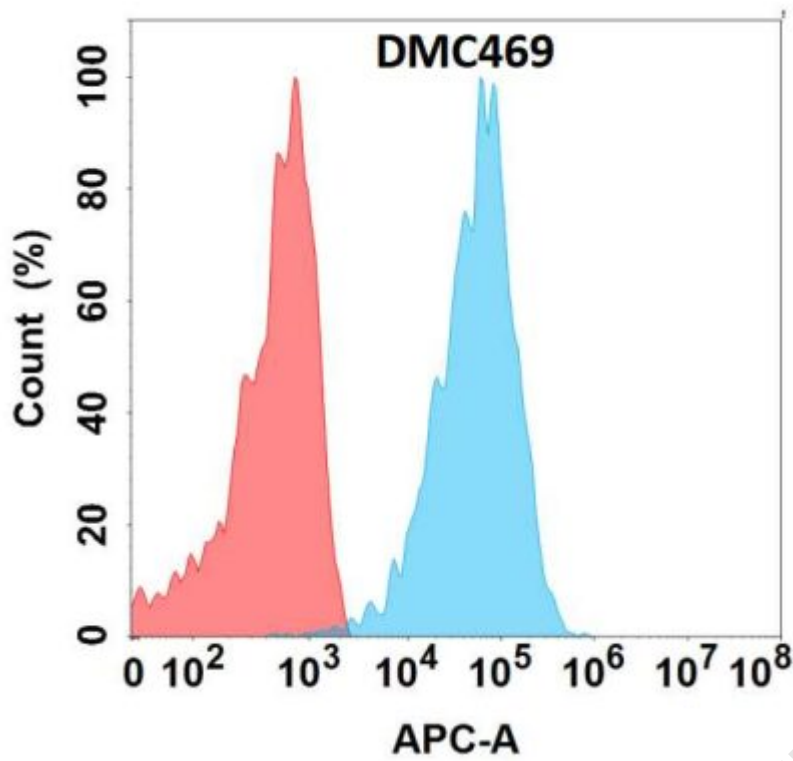


Figure 1. Flow cytometry analysis with Anti-CLEC9A (DMC469) on Expi293 cells transfected with human CLEC9A (Blue histogram) or Expi293 transfected with irrelevant protein (Red histogram).

