

PRODUCT INFORMATION

Common Name	BMS-901608, HuLuc63, PDL-063, PDL063
Synonyms	CS1;CD319;SLAMF7;CRACC
Applications	ELISA; Flow Cyt
Recommended Dilutions	ELISA 1:5000-10000; Flow Cyt 1:100
Formulation & Reconstitution	Lyophilized from sterile PBS, pH 7.4. Normally 5% - 8% trehalose is added as protectants before lyophilization. Please see Certificate of Analysis for specific instructions of reconstitution.
Host Species	Humanized
IgG type	IgG1
Reactivity	Human
Target	CS1
Uniprot ID	Q9NQ25
Description	Anti-CS1 (elotuzumab biosimilar) mAb
Delivery	In Stock
Storage & Shipping	Store at -20°C to -80°C for 12 months in lyophilized form. After reconstitution, if not intended for use within a month, aliquot and store at -80°C (Avoid repeated freezing and thawing). Lyophilized proteins are shipped at ambient temperature.
Background	Research grade biosimilar. Not for use in therapeutic or diagnostic procedures for humans or animals.
Usage	Research use only
Conjugate	Unconjugated
DIMA Disclaimer	All DIMA recombinant antibodies are genuinely generated by DIMA Biotech. They are all under patent application. Any protein sequencing or reverse engineering attempt is prohibited. We are actively scrutinizing all patent application to ensure no IP infringement.



Anti-CS1 (elotuzumab biosimilar) mAb ELISA

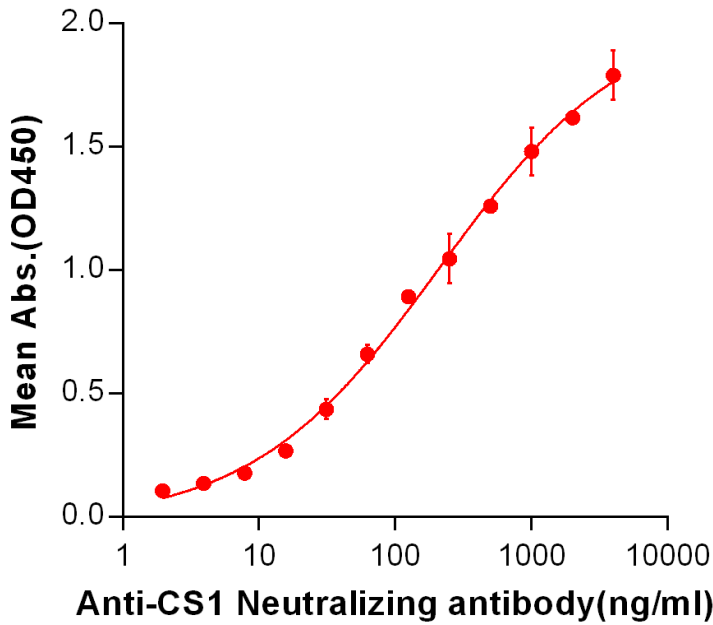


Figure 1. ELISA plate pre-coated by 2 $\mu\text{g/ml}$ (100 $\mu\text{L/well}$) Human CS1, hFc-His tagged protein (PME100002) can bind Anti-CS1 Neutralizing antibody in a linear range of 7.81-210.7 ng/ml. In order to specifically detect BME100002, mouse anti-human Fab-specific antibody was used as detection antibody.

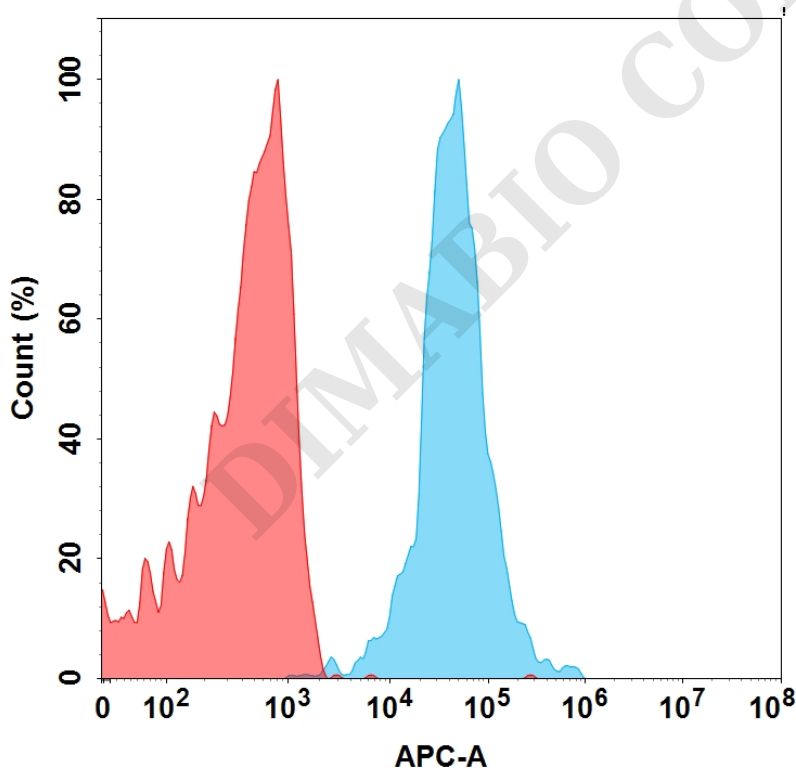


Figure 2. Flow cytometry analysis with 15 $\mu\text{g/mL}$ Anti-CS1 (elotuzumab) mAb (BME100002) on Expi293 cells transfected with Human CS1 protein (Blue histogram) or Expi293 transfected with irrelevant protein (Red histogram).

