

PRODUCT INFORMATION

Common Name	FPA-008,FPA008
Synonyms	CSF1R;C-FMS;CD115;CSFR;FIM2;FMS;M-CSFR
Applications	ELISA; Flow Cyt
Recommended Dilutions	ELISA 1:5000-10000; Flow Cyt 1:100
Formulation & Reconstitution	Lyophilized from sterile PBS, pH 7.4. Normally 5% - 8% trehalose is added as protectants before lyophilization. Please see Certificate of Analysis for specific instructions of reconstitution.
Host Species	Humanized
IgG type	IgG4
Reactivity	Human
Target	CSF1R
Uniprot ID	P07333
Description	Anti-CSF1R(cabiralizumab biosimilar) mAb
Delivery	In Stock
Storage & Shipping	Store at -20°C to -80°C for 12 months in lyophilized form. After reconstitution, if not intended for use within a month, aliquot and store at -80°C (Avoid repeated freezing and thawing). Lyophilized proteins are shipped at ambient temperature.
Background	Research grade biosimilar. Not for use in therapeutic or diagnostic procedures for humans or animals.
Usage	Research use only
Conjugate	Unconjugated
DIMA Disclaimer	All DIMA recombinant antibodies are genuinely generated by DIMA Biotech. They are all under patent application. Any protein sequencing or reverse engineering attempt is prohibited. We are actively scrutinizing all patent application to ensure no IP infringement.

DIMA BIO CONFIDENTIAL



Anti-CSF1R (cabiralizumab biosimilar) mAb ELISA

0.1 μ g of Human CSF1R, His Tagged protein per well

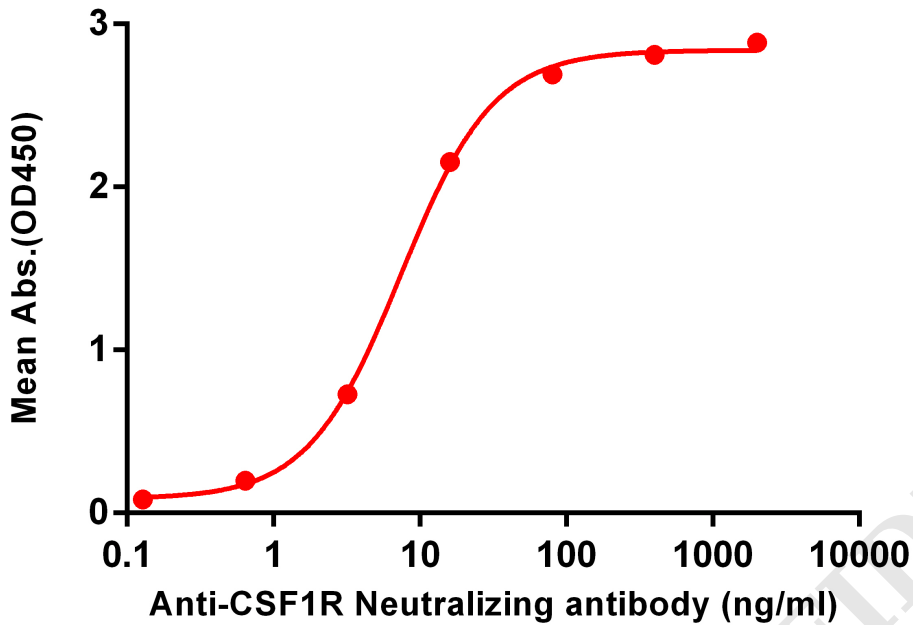


Figure 1. ELISA plate pre-coated by 1 μ g/ml (100 μ l/well) Human CSF1R , His tagged protein PME100067 can bind Anti-CSF1R Neutralizing antibody (BME100055) in a linear range of 0.2-16 ng/ml.

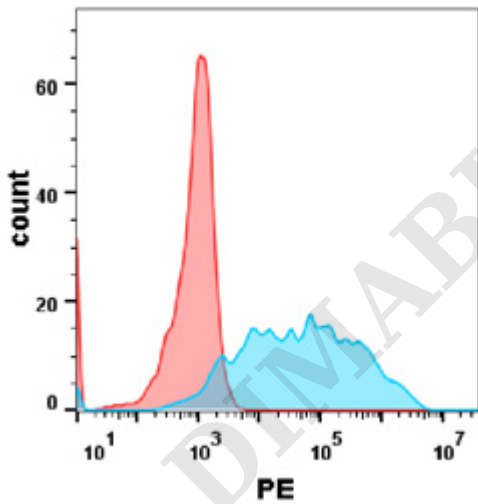


Figure 2. Flow cytometry analysis with Anti-CSF1R mAb 1 μ g/ml (cabiralizumab) on Expi293 cells transfected with human CSF1R (Blue histogram)or Expi293 transfected with irrelevant protein(Red histogram) .



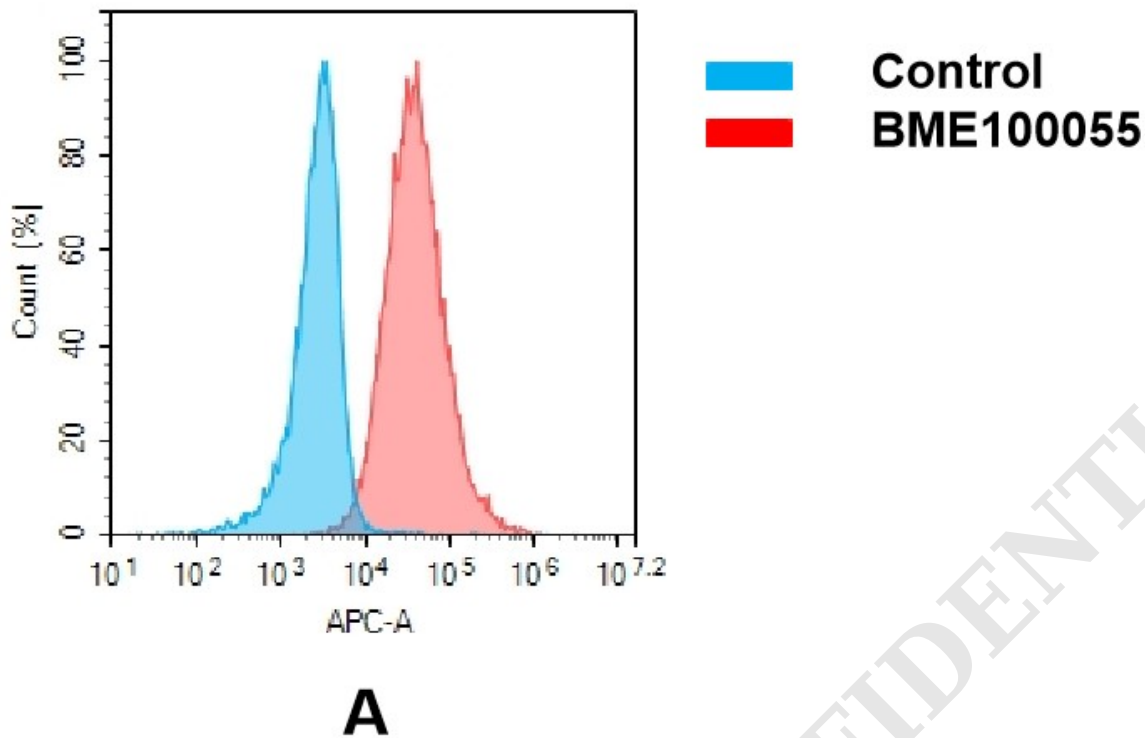


Figure 3. Flow cytometry analysis of antigen binding of anti-human CSF1R mAb(BME100055).
(A) A clear peak shift of BME100055 was seen compared to the control when incubated with CSF1R-expressing THP-1 cells, indicating strong binding of BME100055 to CSF1R. Antibodies were incubated at 2 µg/mL.

DIMABIO CONFIDENTIAL

