

PRODUCT INFORMATION

Common Name	BMS-734016, MDX-010, MDX-CTLA-4
Synonyms	CTLA4;CD152
Applications	ELISA; Flow Cyt
Recommended Dilutions	ELISA 1:5000-10000; Flow Cyt 1:100
Formulation & Reconstitution	Lyophilized from sterile PBS, pH 7.4. Normally 5% - 8% trehalose is added as protectants before lyophilization. Please see Certificate of Analysis for specific instructions of reconstitution.
Host Species	Homo sapiens
IgG type	IgG1
Reactivity	Human
Target	CTLA-4
Uniprot ID	P16410
Description	Anti-CTLA-4 (ipilimumab biosimilar) mAb
Delivery	In Stock
Storage & Shipping	Store at -20°C to -80°C for 12 months in lyophilized form. After reconstitution, if not intended for use within a month, aliquot and store at -80°C (Avoid repeated freezing and thawing). Lyophilized proteins are shipped at ambient temperature.
Background	Research grade biosimilar. Not for use in therapeutic or diagnostic procedures for humans or animals.
Usage	Research use only
Conjugate	Unconjugated
DIMA Disclaimer	All DIMA recombinant antibodies are genuinely generated by DIMA Biotech. They are all under patent application. Any protein sequencing or reverse engineering attempt is prohibited. We are actively scrutinizing all patent application to ensure no IP infringement.



Anti-CTLA4 (ipilimumab biosimilar) mAb ELISA

0.2 µg of CTLA-4, mFc-His Tagged protein per well

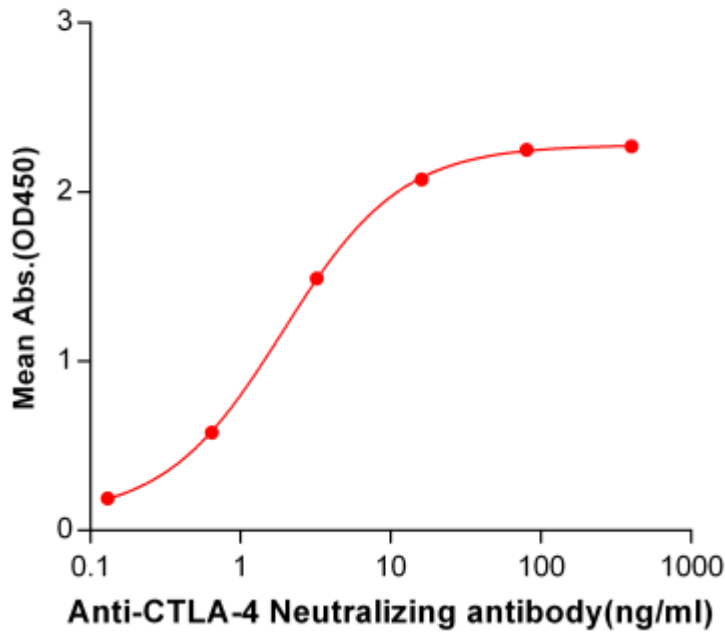


Figure 1. ELISA plate pre-coated by 2 µg/ml (100 µl/well) Human CTLA4, mFc-His tagged protein ([getskuurl sku="PME100017"]) can bind Anti-CTLA4 Neutralizing antibody in a linear range of 0.13-16.0 ng/ml.

Anti-CTLA4 (ipilimumab biosimilar) mAb ELISA

0.2 µg of CTLA-4, hFc Tagged protein per well

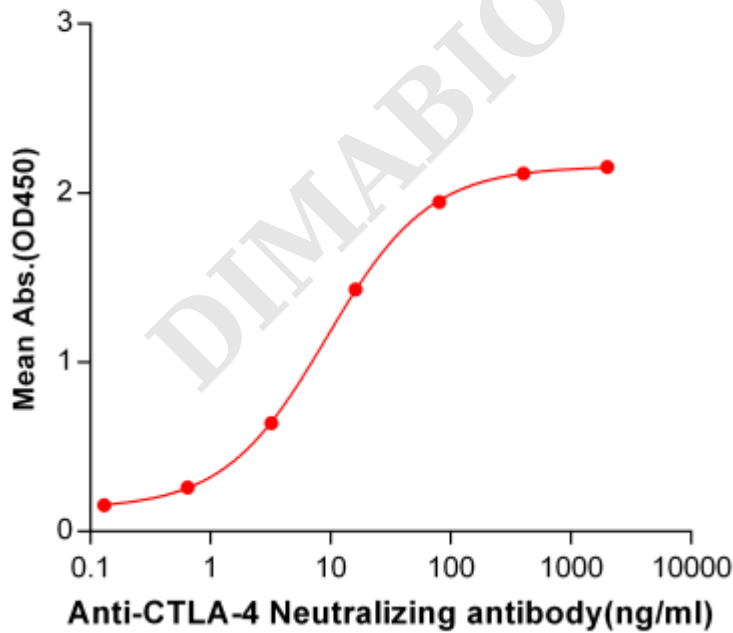


Figure 2. ELISA plate pre-coated by 2 µg/ml (100 µl/well) Human CTLA4, hFc tagged protein (PME100479) can bind Anti-CTLA4 Neutralizing antibody in a linear range of 0.64-80.0 ng/ml. In order to specifically detect BME100022, mouse anti-human Fab-specific antibody was used as detection antibody.



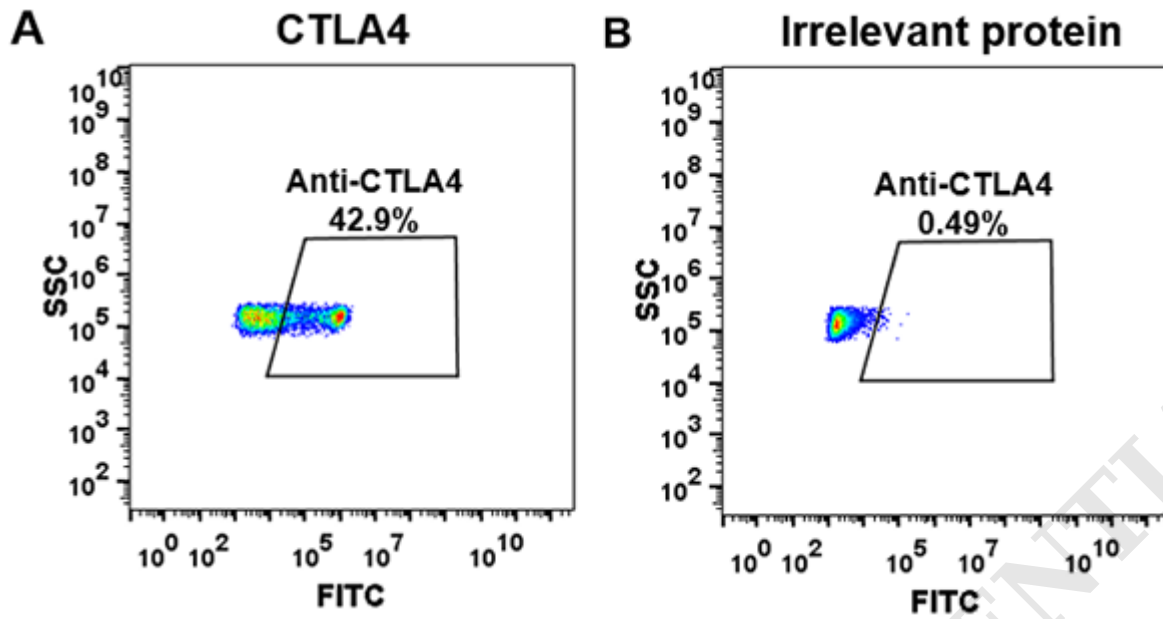


Figure 3. HEK293 cell line transfected with irrelevant protein (**B**) and human CTLA4 (**A**) were surface stained with anti-CTLA4 neutralizing antibody 1 μ g/ml (ipilimumab) followed by Alexa 488-conjugated anti-human IgG secondary antibody.

DIMABIO CONFIDENTIAL

