

## PRODUCT INFORMATION

<b>Common Name</b>	<b>Warning:</b> Undefined variable \$hasAttribute\$ in C:\wwwroot\mirror\dimabio.com\wp-content\plugins\woocommerce-print-products\public\class-woocommerce-print-products-public.php on line 2806 53Hu37 M1
<b>Conjugate</b>	Unconjugated
<b>Synonyms</b>	CXC-R3; CXCR-3; CD183; CKR-L2; GPR9
<b>Applications</b>	ELISA, Flow Cyt
<b>Recommended Dilutions</b>	ELISA 1:5000-10000, Flow Cyt 1:100
<b>Formulation &amp; Reconstitution</b>	Lyophilized from sterile PBS, pH 7.4. Normally 5 % - 8% trehalose is added as protectants before lyophilization. Please see Certificate of Analysis for specific instructions of reconstitution.
<b>Host Species</b>	Humanized
<b>IgG type</b>	Human IgG1(S239D,I332E,E356D,M358L) - kappa
<b>Reactivity</b>	Human
<b>Target</b>	CXCR3
<b>Uniprot ID</b>	P49682
<b>Description</b>	Anti-CXCR3 (53Hu37 biosimilar)mAb
<b>Delivery</b>	In Stock
<b>Yefei Storage</b>	Store at -20°C to -80°C for 12 months in lyophilized form. After reconstitution, if not intended for use within a month, aliquot and store at -80°C (Avoid repeated freezing and thawing). Lyophilized antibodies are shipped at ambient temperature.
<b>Background</b>	Research grade biosimilar. Not for use in therapeutic or diagnostic procedures for humans or animals.
<b>Usage</b>	Research use only

## Anti-CXCR3 (53Hu37 biosimilar)mAb ELISA

0.2 µg of Human CXCR3, hFc tagged protein per well

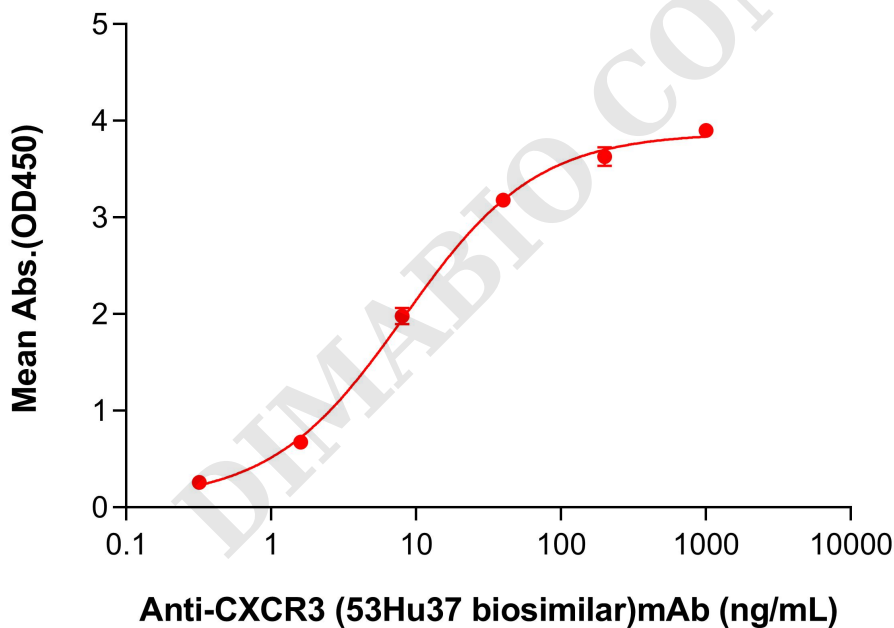


Figure 1. ELISA plate pre-coated by 2 µg/mL (100 µL/well) Human CXCR3 Protein, hFc Tag (PME100833) can bind Anti-CXCR3 (53Hu37 biosimilar)mAb (BME100283) in a linear range of 1.6–8 ng/mL. In order to specifically detect BME100283, mouse anti-human Fab-specific antibody was used as detection antibody.



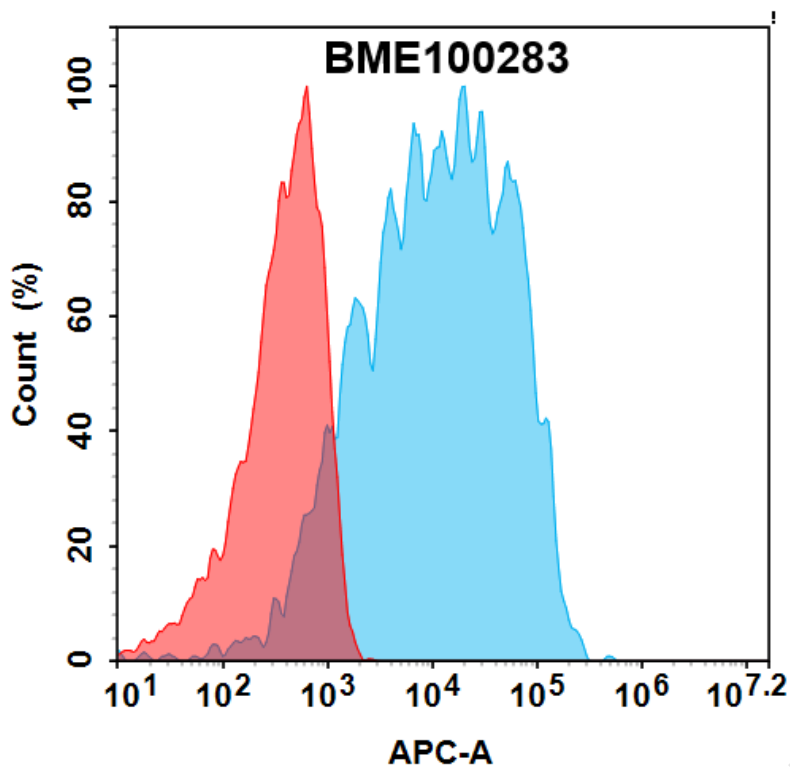


Figure 2. Flow cytometry analysis with 0.5 µg/ml Anti-CXCR3 (53Hu37 biosimilar)mAb (BME100283) on HEK293 cells transfected with human CXCR3 (Blue histogram) or HEK293 transfected with irrelevant protein (Red histogram).

DIMABIO CONFIDENTIAL

