

PRODUCT INFORMATION

Clone ID	DMC680
Target	CXCR4
Synonyms	CD184; D2S201E; FB22; HM89; HSY3RR; LAP-3; LAP3; LCR1; LESTR; NPY3R; NPYR; NPYRL; NPY3R; WHIM; WHIMS
Host Species	Rabbit
Description	Anti-CXCR4 antibody(DMC680); IgG1 Chimeric mAb
Delivery	In Stock
Uniprot ID	P61073; A0A0U3FJG0; A0A0U3GXA9
IgG type	Rabbit/Human Fc chimeric IgG1
Clonality	Monoclonal
Reactivity	Human
Applications	Flow Cyt
Recommended Dilutions	Flow Cyt 1:100
Purification	Purified from cell culture supernatant by affinity chromatography
Formulation & Reconstitution	Lyophilized from sterile PBS, pH 7.4. Normally 5 % - 8% trehalose is added as protectants before lyophilization. Please see Certificate of Analysis for specific instructions of reconstitution.
Storage & Shipping	Store at -20°C to -80°C for 12 months in lyophilized form. After reconstitution, if not intended for use within a month, aliquot and store at -80°C (Avoid repeated freezing and thawing). Lyophilized proteins are shipped at ambient temperature.
Background	This gene encodes a CXC chemokine receptor specific for stromal cell-derived factor-1. The protein has 7 transmembrane regions and is located on the cell surface. It acts with the CD4 protein to support HIV entry into cells and is also highly expressed in breast cancer cells. Mutations in this gene have been associated with WHIM (warts; hypogammaglobulinemia; infections; and myelokathexis) syndrome. Alternate transcriptional splice variants; encoding different isoforms; have been characterized. [provided by RefSeq; Jul 2008]
Usage	Research use only
Conjugate	Unconjugated
DIMA Disclaimer	All DIMA recombinant antibodies are genuinely generated by DIMA Biotech. They are all under patent application. Any protein sequencing or reverse engineering attempt is prohibited. We are actively scrutinizing all patent application to ensure no IP infringement.



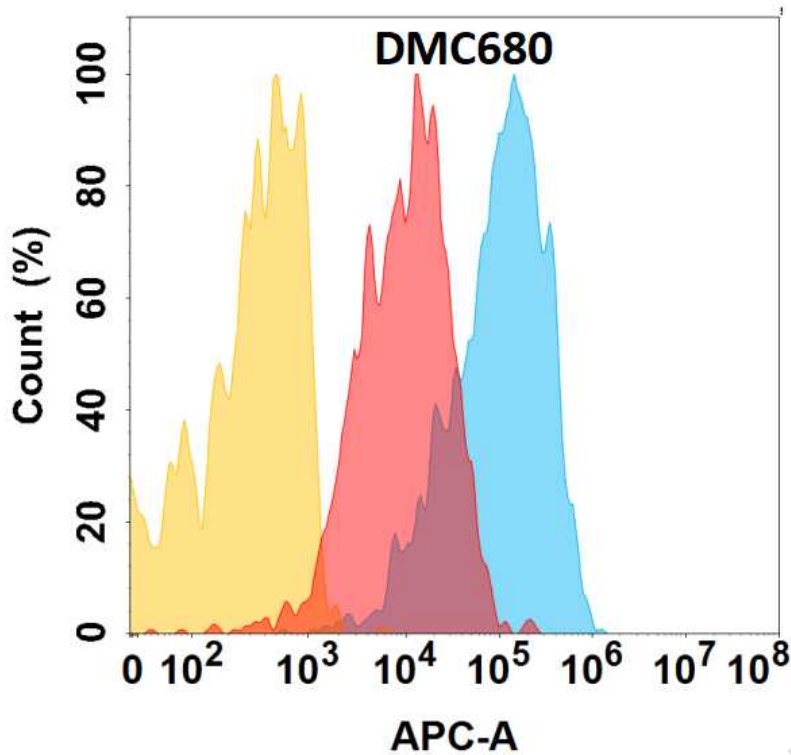


Figure 1. CXCR4 protein is expressed on the surface of Expi293 cell membrane. Flow cytometry analysis with Anti-CXCR4 (DMC680) on Expi293 cells transfected with human CXCR4 (Blue histogram) or Expi293 transfected with irrelevant protein (Red histogram), and Isotype antibody on Expi293 transfected with irrelevant protein (Orange histogram).

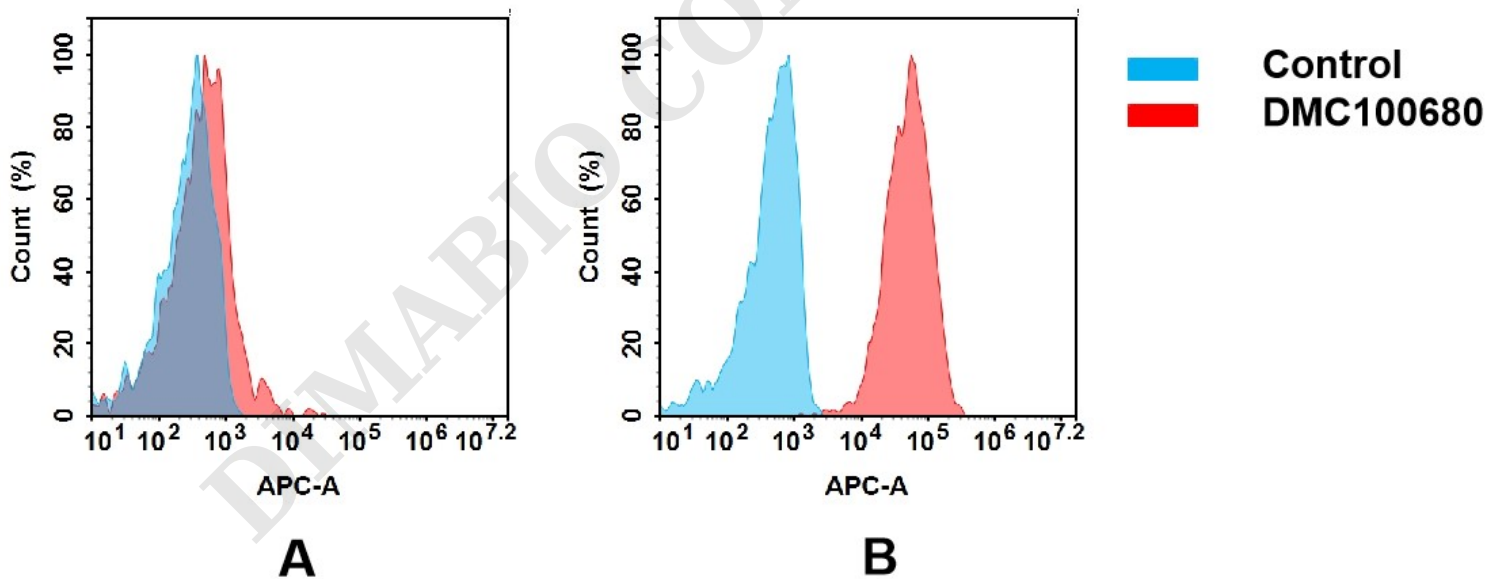


Figure 2. Flow cytometry analysis of antigen binding of anti-human CXCR4 mAb(DMC100680).

(A) DMC100680 does not bind to hepG2 cells that do not express CXCR4.

(B) A clear peak shift of DMC100680 was seen compared to the control when incubated with CXCR4-expressing Hela cells, indicating strong binding of DMC100680 to CXCR4. Antibodies were incubated at 5 μ g/mL.

