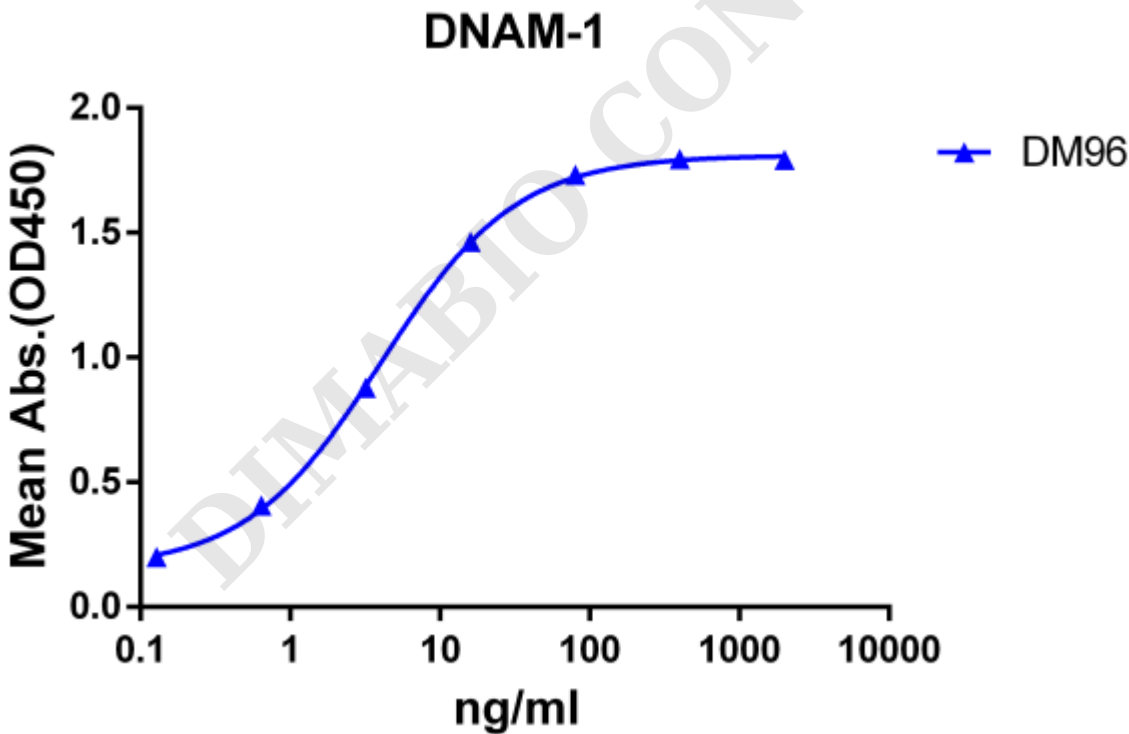


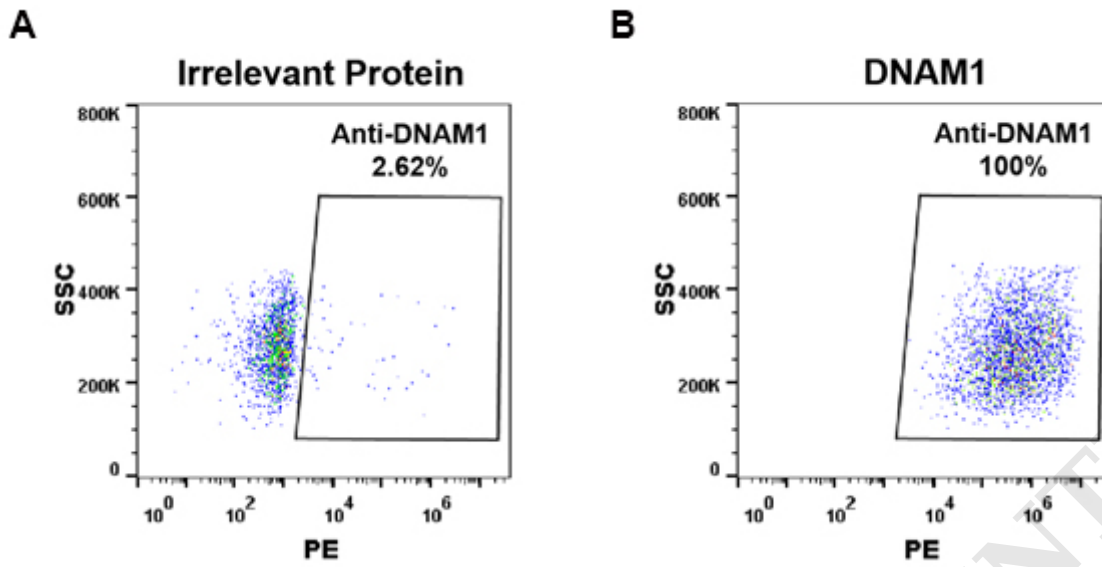
## PRODUCT INFORMATION

<b>Clone ID</b>	<b>Warning:</b> Undefined variable \$hasAttributeValueDescription in C:\wwwroot\mirror\dimabio.com\wp-content\plugins\woocommerce-print-products\publicclass\woocommerce-print-products-public.php on line 2806 DM96
<b>Target</b>	DNAM1
<b>Synonyms</b>	DNAM1; CD226; PTA1
<b>Host Species</b>	Rabbit
<b>Description</b>	Anti-DNAM-1 antibody(DM96); Rabbit mAb
<b>Delivery</b>	In Stock
<b>Uniprot ID</b>	Q15762
<b>IgG type</b>	Rabbit IgG
<b>Clonality</b>	Monoclonal
<b>Reactivity</b>	Human
<b>Applications</b>	ELISA; Flow Cyt
<b>Recommended Dilutions</b>	ELISA 1:5000-10000; Flow Cyt 1:100
<b>Purification</b>	Purified from cell culture supernatant by affinity chromatography
<b>Formulation &amp; Reconstitution</b>	Lyophilized from sterile PBS, pH 7.4. Normally 5% - 8% trehalose is added as protectants before lyophilization. Please see Certificate of Analysis for specific instructions of reconstitution.
<b>Yefel Storage</b>	Store at -20°C to -80°C for 12 months in lyophilized form. After reconstitution, if not intended for use within a month, aliquot and store at -80°C (Avoid repeated freezing and thawing). Lyophilized proteins are shipped at ambient temperature.
<b>Background</b>	This gene encodes a glycoprotein expressed on the surface of NK cells; platelets; monocytes and a subset of T cells. It is a member of the Ig-superfamily containing 2 Ig-like domains of the V-set. The protein mediates cellular adhesion of platelets and megakaryocytic cells to vascular endothelial cells. The protein also plays a role in megakaryocytic cell maturation. Alternative splicing results in multiple transcript variants.
<b>Usage</b>	Research use only
<b>Conjugate</b>	Unconjugated
<b>DIMA Disclaimer</b>	All DIMA recombinant antibodies are genuinely generated by DIMA Biotech. They are all under patent application. Any protein sequencing or reverse engineering attempt is prohibited. We are actively scrutinizing all patent application to ensure no IP infringement.



**Figure 1.** ELISA plate pre-coated by 2 µg/ml (100 µl/well) Human DNAM-1 protein, mFc-His tagged protein ([getskuurl sku="PME100050"]) can bind Rabbit anti-DNAM-1 monoclonal antibody (clone: **DM96**) in a linear range of 0.64-80 ng/ml.





**Figure 2.** HEK293 cell line transfected with irrelevant protein (**A**) and human DNAM-1 (**B**) were surface stained with Rabbit anti-DNAM-1 monoclonal antibody 1 $\mu$ g/ml (**clone: DM96**) followed by PE-conjugated anti-rabbit IgG secondary antibody.

DIMABIO CONFIDENTIAL

