

## PRODUCT INFORMATION

<b>Common Name</b>	<b>Warning:</b> Undefined variable \$hasAttribute\$ in C:\wwwroot\mirror\dimabio.com\wp-content\plugins\woocommerce-print-products\public\class-woocommerce-print-products-public.php on line 2806 Fab C225,IMC-225
<b>Conjugate</b>	Unconjugated
<b>Synonyms</b>	EGFR;ERBB;ERBB1;HER1;PIG61;mENA
<b>Applications</b>	ELISA; Flow Cyt
<b>Recommended Dilutions</b>	ELISA 1:5000-10000
<b>Formulation &amp; Reconstitution</b>	Lyophilized from sterile PBS, pH 7.4. Normally 5% - 8% trehalose is added as protectants before lyophilization. Please see Certificate of Analysis for specific instructions of reconstitution.
<b>Host Species</b>	Chimeric
<b>IgG type</b>	Human IgG1 - kappa
<b>Reactivity</b>	Human
<b>Target</b>	EGFR
<b>Uniprot ID</b>	P00533
<b>Description</b>	Anti-EGFR (Cetuximab biosimilar) mAb
<b>Delivery</b>	In Stock
<b>Yefei Storage</b>	Store at -20°C to -80°C for 12 months in lyophilized form. After reconstitution, if not intended for use within a month, aliquot and store at -80°C (Avoid repeated freezing and thawing). Lyophilized proteins are shipped at ambient temperature.
<b>Background</b>	Research grade biosimilar. Not for use in therapeutic or diagnostic procedures for humans or animals.
<b>Usage</b>	Research use only

## Anti-EGFR (Cetuximab biosimilar) mAb ELISA

0.2 µg of Human EGFR, His tagged protein per well

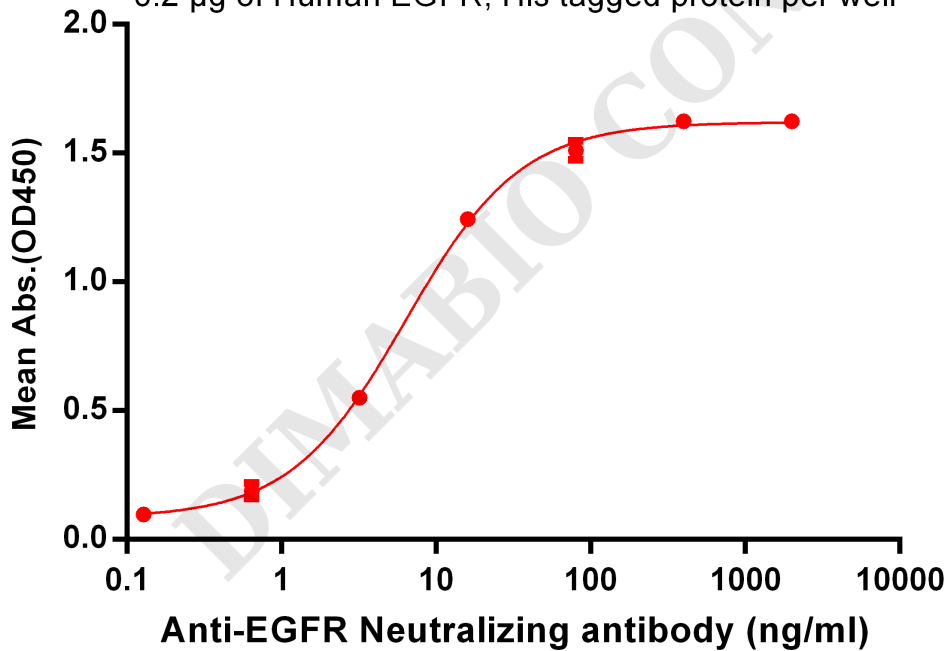


Figure 1. ELISA plate pre-coated by 2 µg/ml (100 µl/well) Human EGFR, His tagged protein PME100099 can bind Anti-EGFR Neutralizing antibody in a linear range of 0.64-80 ng/ml.



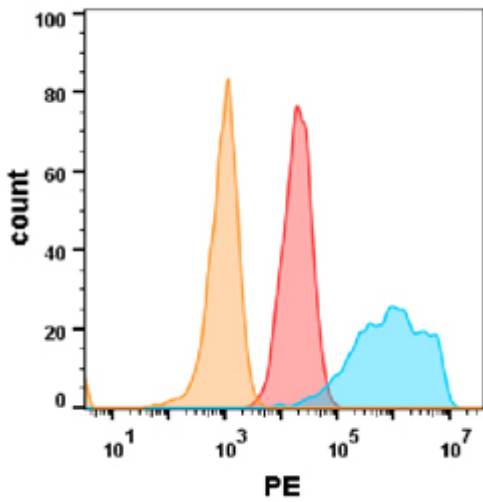


Figure 2. EGFR protein is highly expressed on the surface of HEK293 cell membrane. Flow cytometry analysis with Anti-EGFR (Cetuximab) on HEK293 cells transfected with human EGFR (Blue histogram) or HEK293 transfected with irrelevant protein (Red histogram), and Isotype antibody on HEK293 transfected with irrelevant protein (Orange histogram)

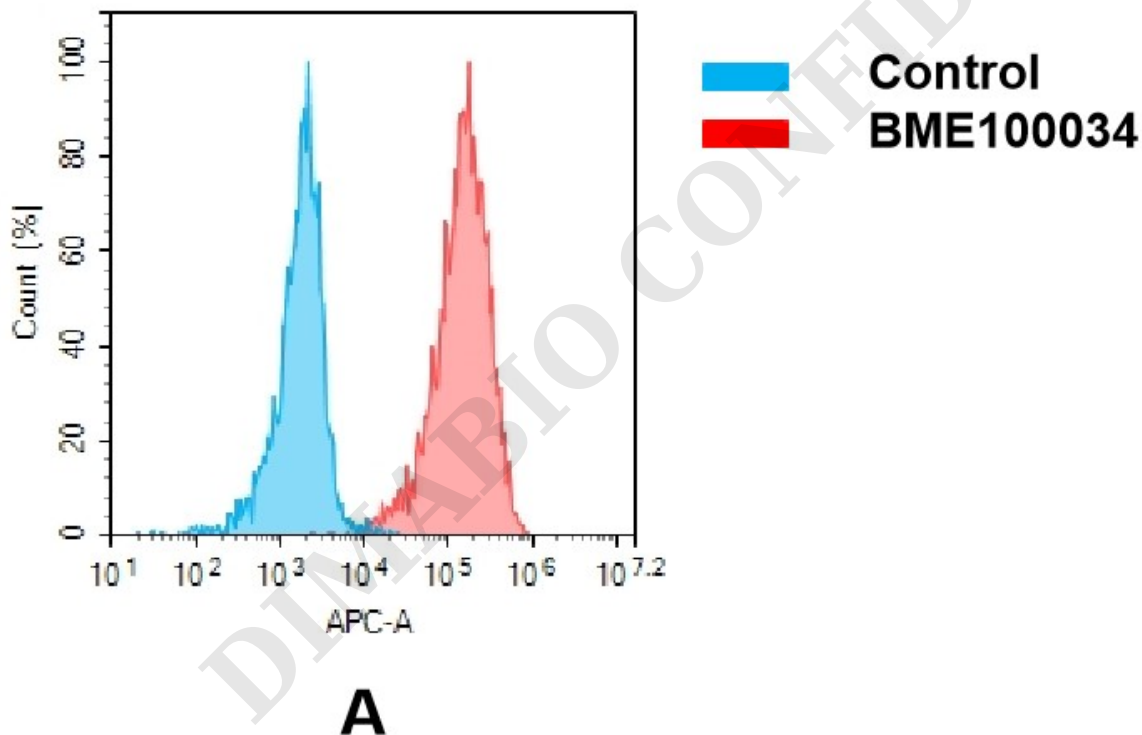


Figure 3. Flow cytometry analysis of antigen binding of anti-human EGFR mAb (BME100034). (A) A clear peak shift of BME100034 was seen compared to the control when incubated with EGFR-expressing HeLa cells, indicating strong binding of BME100034 to EGFR. Antibodies were incubated at 2  $\mu$ g/mL.



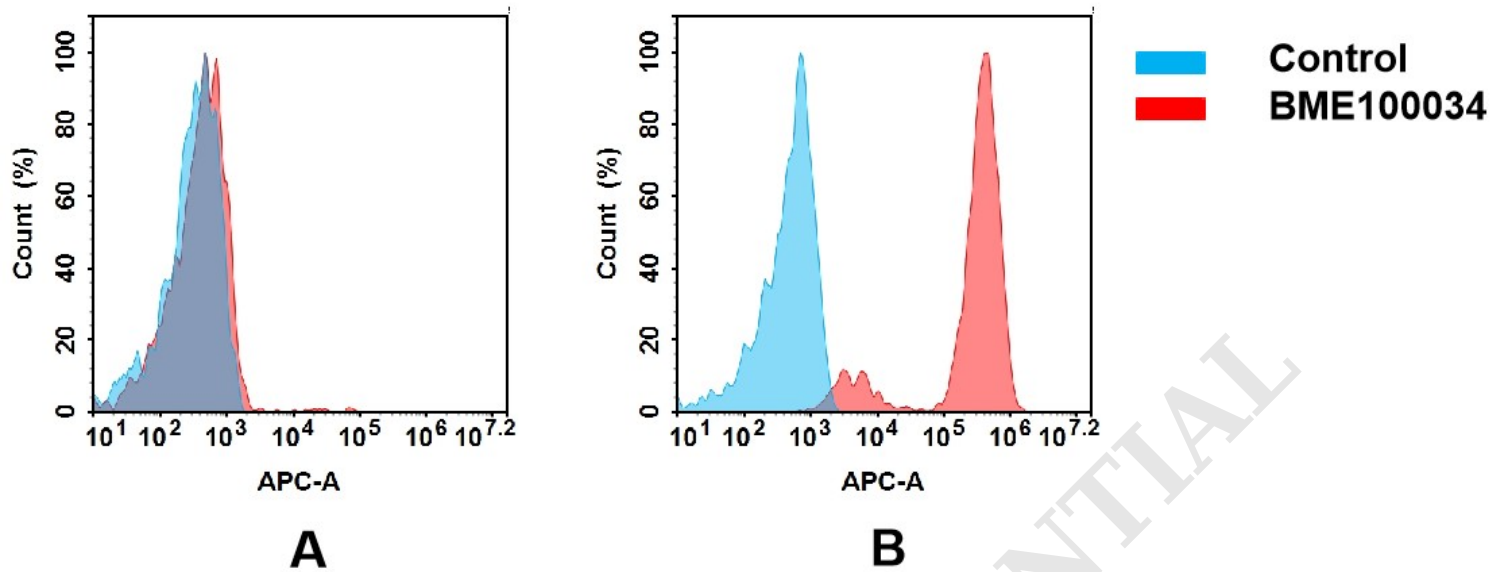


Figure 4. Flow cytometry analysis of antigen binding of anti-human EGFR mAb(BME100034).

(A) BME100034 does not bind to Jurkat cells that do not express EGFR.

(B) A clear peak shift of BME100034 was seen compared to the control when incubated with EGFR-expressing A431 cells, indicating strong binding of BME100034 to EGFR. Antibodies were incubated at 5  $\mu$ g/mL.

DIMABIO CONFIDENTIAL

