

PRODUCT INFORMATION

Clone ID	Warning: Undefined variable \$hasAttributeValueDescription in C:\wwwroot\mirror.dimabio.com\wp-content\plugins\woocommerce-print-products\publicclass-woocommerce-print-products-public.php on line 2806 DM147
Target	EPCAM
Synonyms	EPCAM;TACSTD1;TROP1;CD326;DIAR5;EGP2;EGP314;EGP40;ESA;GA733-2;HNPC8;HNPC8-8;KS1-4;KSA;M4S1;MIC18;MK1
Host Species	Rabbit
Description	Anti-EPCAM antibody(DM147); Rabbit mAb
Delivery	In Stock
Uniprot ID	P16422
IgG type	Rabbit IgG
Clonality	Monoclonal
Reactivity	Human
Applications	ELISA; Flow Cyt
Recommended Dilutions	ELISA 1:5000-10000; Flow Cyt 1:100
Purification	Purified from cell culture supernatant by affinity chromatography
Formulation & Reconstitution	Lyophilized from sterile PBS, pH 7.4. Normally 5% - 8% trehalose is added as protectants before lyophilization. Please see Certificate of Analysis for specific instructions of reconstitution.
Yefel Storage	Store at -20°C to -80°C for 12 months in lyophilized form. After reconstitution, if not intended for use within a month, aliquot and store at -80°C (Avoid repeated freezing and thawing). Lyophilized proteins are shipped at ambient temperature.
Background	This gene encodes a carcinoma-associated antigen and is a member of a family that includes at least two type I membrane proteins. This antigen is expressed on most normal epithelial cells and gastrointestinal carcinomas and functions as a homotypic calcium-independent cell adhesion molecule. The antigen is being used as a target for immunotherapy treatment of human carcinomas. Mutations in this gene result in congenital tufting enteropathy.
Usage	Research use only
Conjugate	Unconjugated
DIMA Disclaimer	All DIMA recombinant antibodies are genuinely generated by DIMA Biotech. They are all under patent application. Any protein sequencing or reverse engineering attempt is prohibited. We are actively scrutinizing all patent application to ensure no IP infringement.

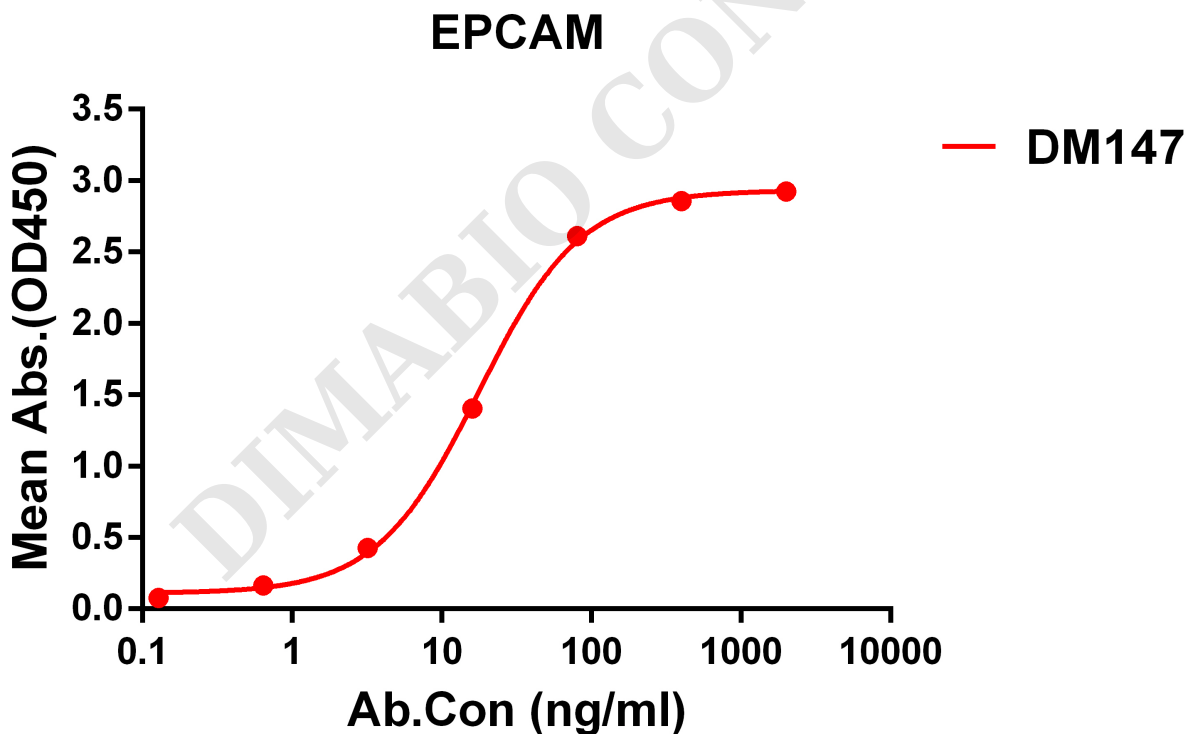


Figure 1. ELISA plate pre-coated by 1 µg/ml (100 µl/well) Human EPCAM protein, His tagged protein PME100068 can bind Rabbit anti-EPCAM monoclonal antibody (clone: DM147) in a linear range of 5-100 ng/ml.



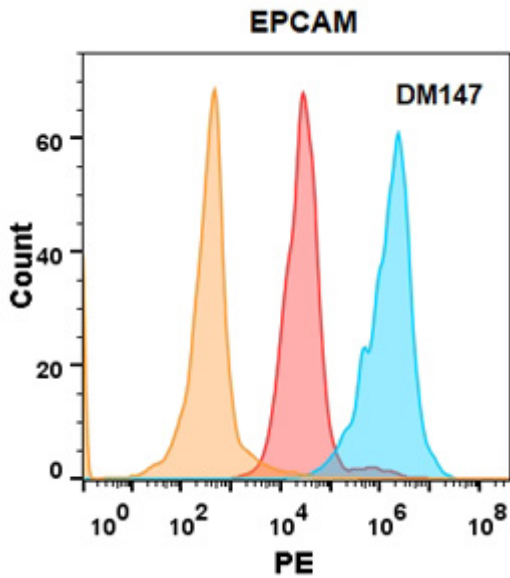


Figure 2. EPCAM protein is highly expressed on the surface of HEK293 cell membrane. Flow cytometry analysis with Anti-EPCAM (DM147) on HEK293 cells transfected with human EPCAM (Blue histogram) or HEK293 transfected with irrelevant protein (Red histogram), and Isotype antibody on HEK293 transfected with irrelevant protein (Orange histogram).

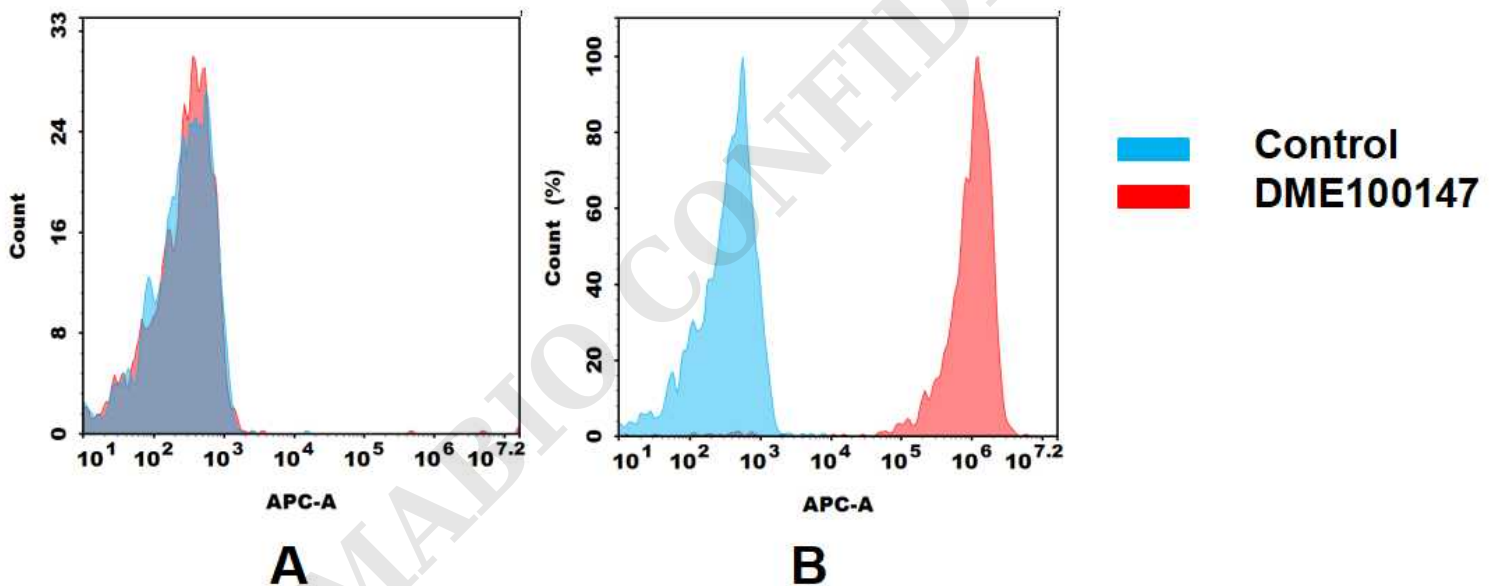


Figure 3. Flow cytometry analysis of antigen binding of Rabbit anti-human EPCAM mAb(DME100147).

(A) DME100147 does not bind to Jurkat cells that do not express EPCAM.

(B) A clear peak shift of DME100147 was seen compared to the control when incubated with EPCAM -expressing HT55 cells, indicating strong binding of DME100147 to EPCAM. Antibodies were incubated at 10 μ g/mL.

