

PRODUCT INFORMATION

Common Name	Warning: Undefined variable \$hasAttributeValueDescription in C:\wwwroot\mirror\dimabio.com\wp-content\plugins\woocommerce-print-products\publicclass\woocommerce-print-products-public.php on line 2806 IMC001
Conjugate	Unconjugated
Synonyms	GA733-2, M152, M451, MIC18, TACSTD1, TROP1
Applications	ELISA, Flow Cyt
Recommended Dilutions	ELISA 1:5000-10000, Flow Cyt 1:100
Formulation & Reconstitution	Lyophilized from sterile PBS, pH 7.4. Normally 5% - 8% trehalose is added as protectants before lyophilization. Please see Certificate of Analysis for specific instructions.
Host Species	Humanized
IgG type	Human IgG1 - kappa
Reactivity	Human
Target	EPCAM
Uniprot ID	P16422
Description	Anti-EPCAM(IMC001 biosimilar) mAb
Delivery	In Stock
Yefei Storage	Store at -20°C to -80°C for 12 months in lyophilized form. After reconstitution, if not intended for use within a month, aliquot and store at -80°C (Avoid repeated freezing and thawing). Lyophilized antibodies are shipped at ambient temperature.
Background	Research grade biosimilar. Not for use in therapeutic or diagnostic procedures for humans or animals.
Usage	Research use only

Anti-EPCAM(IMC001 biosimilar) mAb ELISA

0.2 µg of Human EPCAM, His tagged protein per well

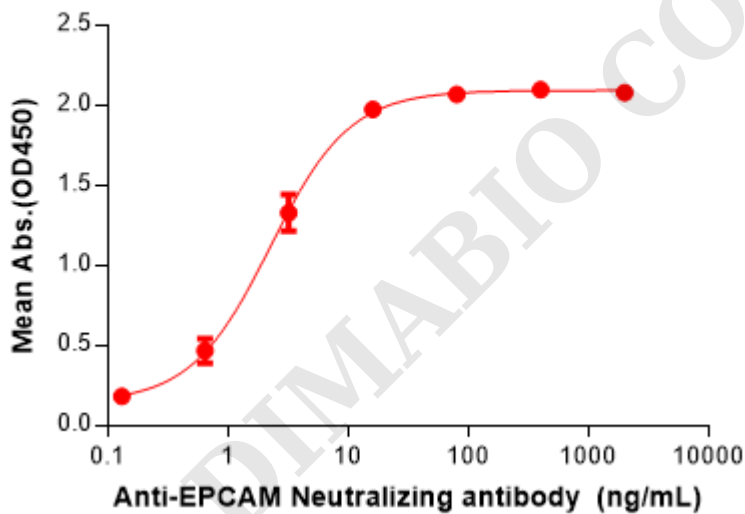


Figure 1. ELISA plate pre-coated by 2 µg/mL (100 µL/well) Human EPCAM Protein, His Tag (PME100068) can bind Anti-EPCAM(IMC001 biosimilar) mAb (BME100189) in a linear range of 0.64-16 ng/mL.



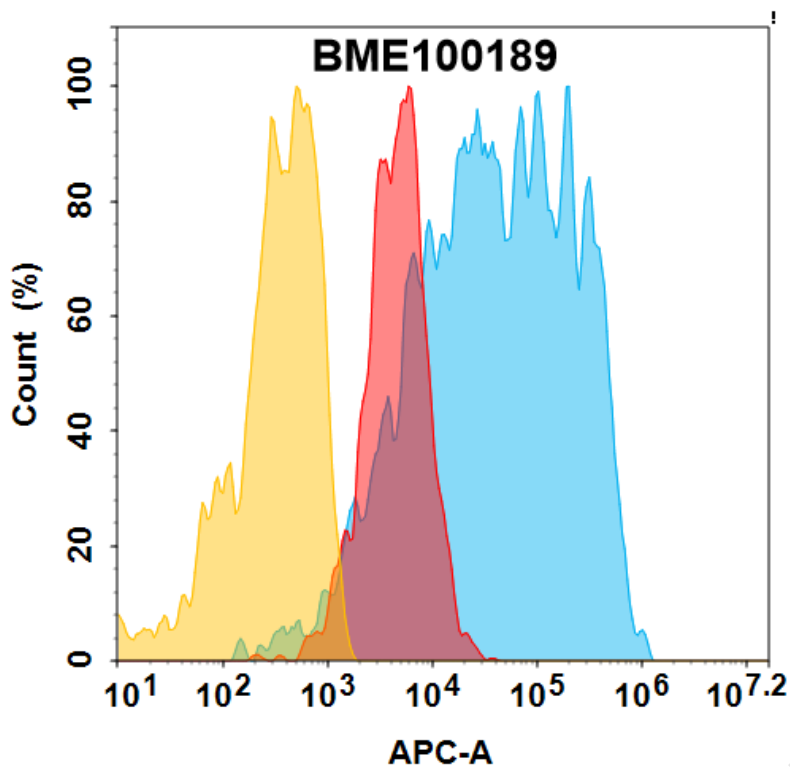


Figure 2. Flow cytometry analysis with 7.5 $\mu\text{g}/\text{mL}$ Anti-EPCAM(IMC001 biosimilar) mAb (BME100189) on HEK293 cells transfected with human EPCAM (Blue histogram) or HEK293 transfected with irrelevant protein (Red histogram), and Isotype antibody on HEK293 transfected with irrelevant protein (Orange histogram).

