

PRODUCT INFORMATION

Clone ID	DM154
Target	FAP
Synonyms	FAP;FAPalpha;SIMP;Seprase;APCE
Host Species	Rabbit
Description	Anti-FAP antibody(DM154); Rabbit mAb
Delivery	In Stock
Uniprot ID	Q12884
IgG type	Rabbit IgG
Clonality	Monoclonal
Reactivity	Human
Applications	ELISA; Flow Cyt
Recommended Dilutions	ELISA 1:5000-10000; Flow Cyt 1:100
Purification	Purified from cell culture supernatant by affinity chromatography
Formulation & Reconstitution	Lyophilized from sterile PBS, pH 7.4. Normally 5 % - 8% trehalose is added as protectants before lyophilization. Please see Certificate of Analysis for specific instructions of reconstitution.
Storage & Shipping	Store at -20°C to -80°C for 12 months in lyophilized form. After reconstitution, if not intended for use within a month, aliquot and store at -80°C (Avoid repeated freezing and thawing). Lyophilized proteins are shipped at ambient temperature.
Background	The protein encoded by this gene is a homodimeric integral membrane gelatinase belonging to the serine protease family. It is selectively expressed in reactive stromal fibroblasts of epithelial cancers; granulation tissue of healing wounds; and malignant cells of bone and soft tissue sarcomas. This protein is thought to be involved in the control of fibroblast growth or epithelial-mesenchymal interactions during development; tissue repair; and epithelial carcinogenesis. Alternatively spliced transcript variants encoding different isoforms have been found for this gene.
Usage	Research use only
Conjugate	Unconjugated
DIMA Disclaimer	All DIMA recombinant antibodies are genuinely generated by DIMA Biotech. They are all under patent application. Any protein sequencing or reverse engineering attempt is prohibited. We are actively scrutinizing all patent application to ensure no IP infringement.



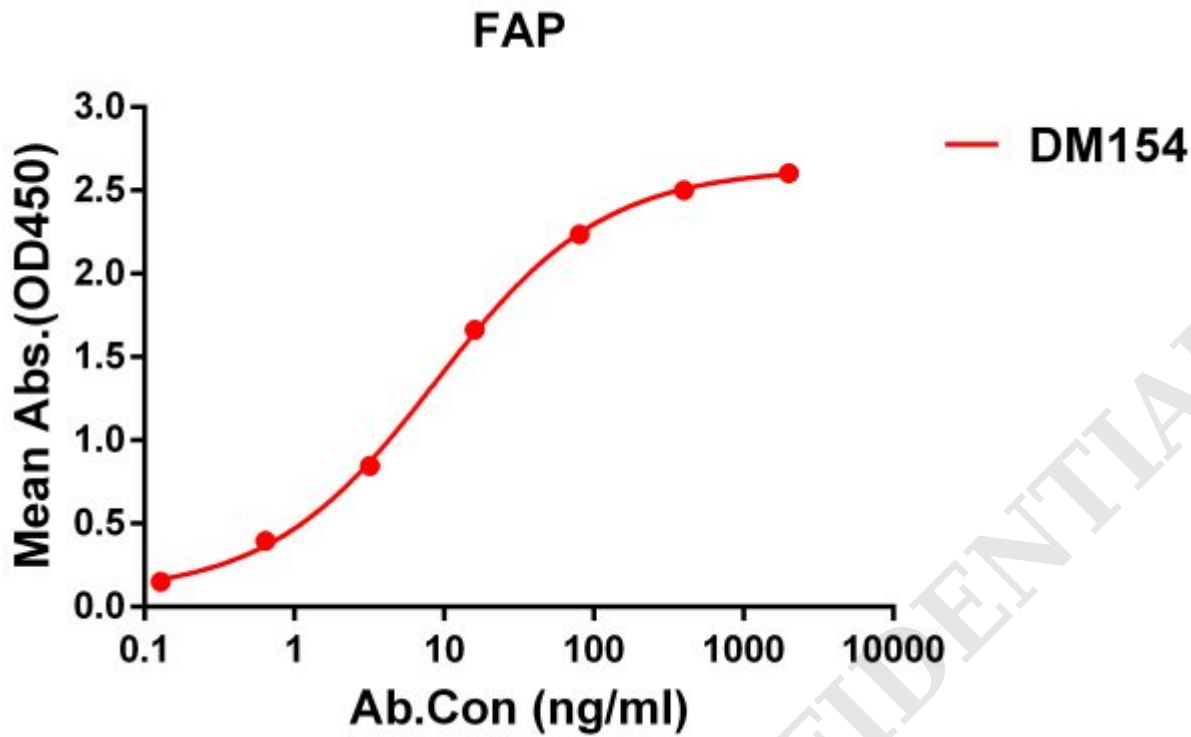


Figure 1. ELISA plate pre-coated by 1 μ g/ml (100 μ l/well) Human FAP protein, His tagged protein (Igetskuurl sku="PME100626") can bind Rabbit anti-FAP monoclonal antibody(**clone: DM154**) in a linear range of 1-500 ng/ml.

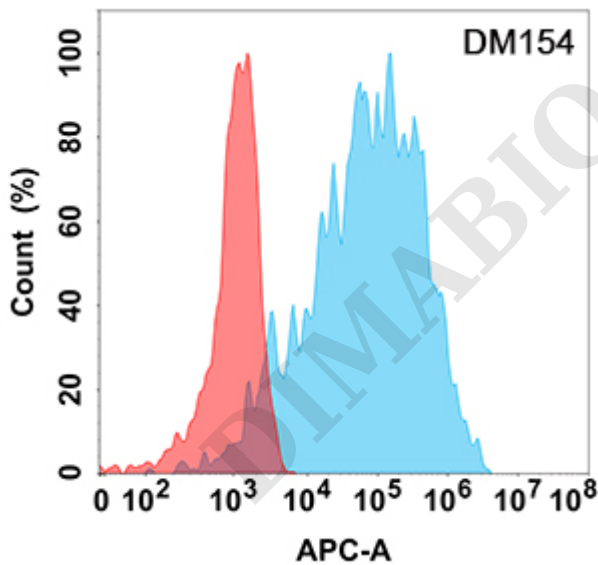


Figure 2. Flow cytometry analysis with Anti-FAP (DM154) on Expi293 cells transfected with human FAP (Blue histogram) or Expi293 transfected with irrelevant protein (Red histogram).

