

## PRODUCT INFORMATION

<b>Common Name</b>	<b>Warning:</b> Undefined variable \$hasAttributeValueDescription in C:\wwwroot\mirror\dimabio.com\wp-content\plugins\woocommerce-print-products\public\class-woocommerce-print-products-public.php on line 2806 BFCR-4350-A, BFCR-4350A, RG-6160, RO-7187797
<b>Conjugate</b>	Unconjugated
<b>Synonyms</b>	BXMAS1;CD307;CD307e;FCRH5;IRTA2;PRO820
<b>Applications</b>	ELISA, Flow Cyt
<b>Recommended Dilutions</b>	ELISA 1:5000-10000, Flow Cyt 1:100
<b>Formulation &amp; Reconstitution</b>	Lyophilized from sterile PBS, pH 7.4. Normally 5 % - 8% trehalose is added as protectants before lyophilization. Please see Certificate of Analysis for specific instructions of reconstitution.
<b>Host Species</b>	Humanized
<b>IgG type</b>	Human IgG1 - kappa
<b>Reactivity</b>	Human
<b>Target</b>	FCRL5
<b>Uniprot ID</b>	Q96RD9
<b>Description</b>	Anti-FCRL5(cevostamab biosimilar without anti-CD3 portion) mAb
<b>Delivery</b>	In Stock
<b>Yefei Storage</b>	Store at -20°C to -80°C for 12 months in lyophilized form. After reconstitution, if not intended for use within a month, aliquot and store at -80°C (Avoid repeated freezing and thawing). Lyophilized proteins are shipped at ambient temperature.
<b>Background</b>	Research grade biosimilar. Not for use in therapeutic or diagnostic procedures for humans or animals.
<b>Usage</b>	Research use only

## Anti-FCRL5(cevostamab biosimilar without anti-CD3 portion) mAb ELISA

0.2 µg of Human FCRL5, His tagged protein per well

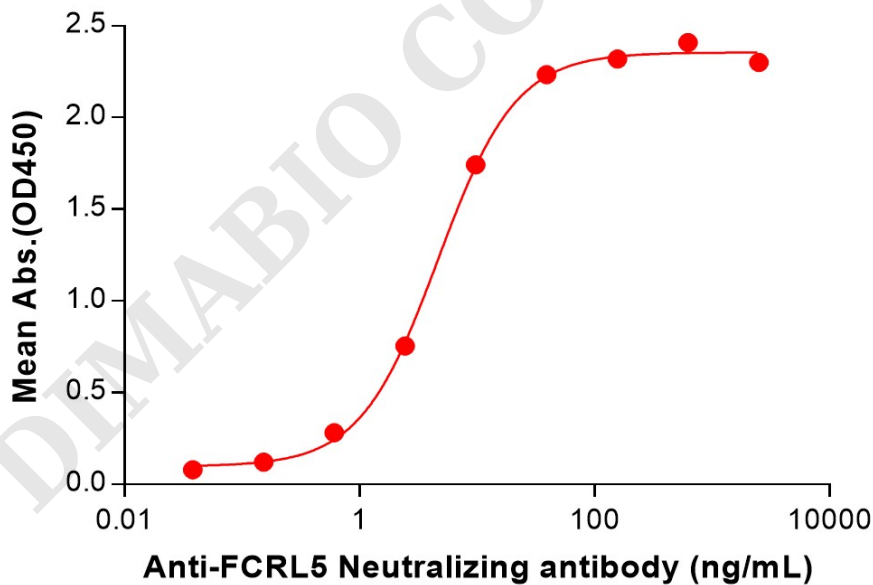


Figure 1. ELISA plate pre-coated by 2 µg/mL (100 µL/well) Human FCRL5 Protein, His Tag (PME100625) can bind Anti-FCRL5(cevostamab biosimilar without anti-CD3 portion) mAb (BME100089) in a linear range of 0.61-39.06 ng/mL.



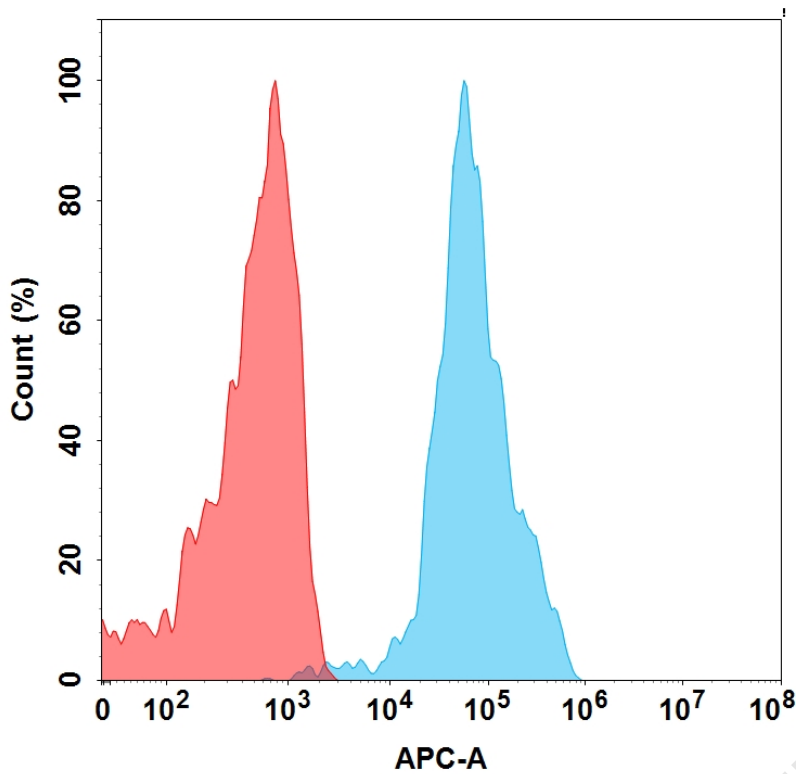


Figure 2. Flow cytometry analysis with 1 µg/mL Anti-FCRL5 (cevostamab biosimilar) mAb (BME100089) on HEK293 cells transfected with Human FCRL5 protein (Blue histogram) or HEK293 transfected with irrelevant protein (Red histogram).

### Anti-FCRL5(cevostamab biosimilar without anti-CD3 portion) mAb ELISA

0.2 µg of Human FCRL5, mFc tagged protein per well

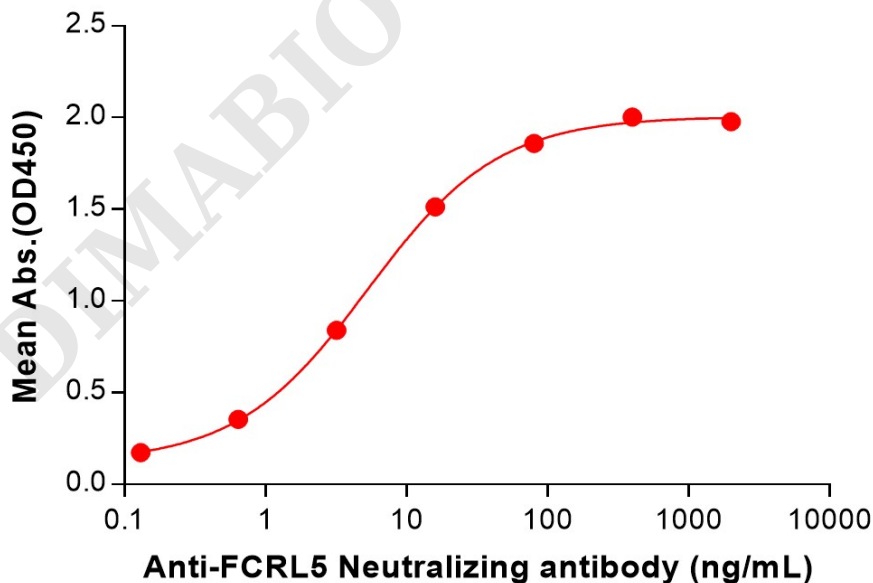
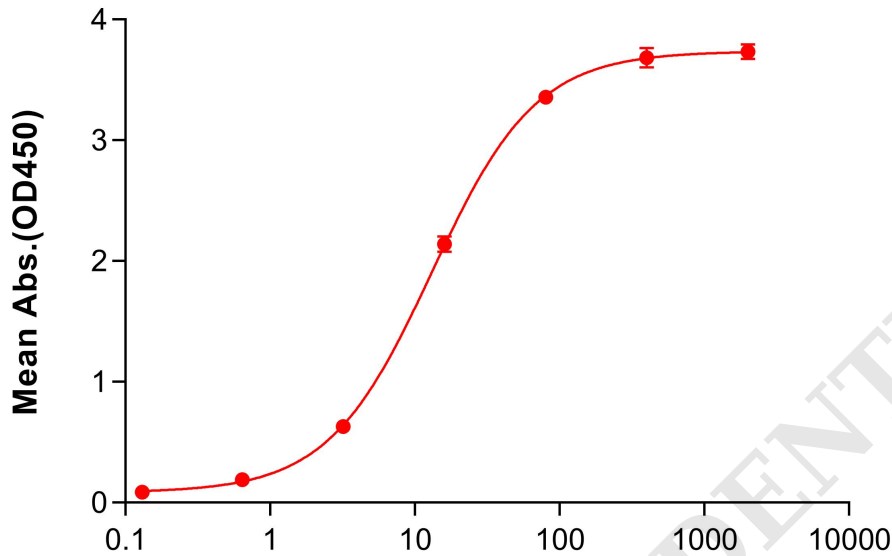


Figure 3. ELISA plate pre-coated by 2 µg/mL (100 µL/well) Human FCRL5(745-847) Protein, mFc Tag (PME101495) can bind Anti-FCRL5(cevostamab biosimilar without anti-CD3 portion) mAb (BME100089) in a linear range of 0.64-80 ng/mL.



## Anti-FCRL5(cevostamab biosimilar without anti-CD3 portion) mAb ELISA

0.2  $\mu$ g of Cynomolgus FCRL5, His tagged protein per well



**Anti-FCRL5(cevostamab biosimilar without anti-CD3 portion) mAb (ng/mL)**

Figure 4. ELISA plate pre-coated by 2  $\mu$ g/mL (100  $\mu$ L/well) Cynomolgus FCRL5 Protein, His Tag (PME-C100061) can bind Anti-FCRL5(cevostamab biosimilar without anti-CD3 portion) mAb (BME100089) in a linear range of 3.2-16 ng/mL.

