

**PRODUCT INFORMATION**

<b>Common Name</b>	M3,MORAb-003
<b>Synonyms</b>	FBP;FOLR;FRalpha;NCFTD
<b>Applications</b>	ELISA, Flow Cyt
<b>Recommended Dilutions</b>	ELISA 1:5000-10000, Flow Cyt 1:100
<b>Formulation &amp; Reconstitution</b>	Lyophilized from sterile PBS, pH 7.4. Normally 5% - 8% trehalose is added as protectants before lyophilization. Please see Certificate of Analysis for specific instructions.
<b>Host Species</b>	Humanized
<b>IgG type</b>	IgG1(E239D, M241L)
<b>Reactivity</b>	Human
<b>Target</b>	FOLR1
<b>Uniprot ID</b>	P15328
<b>Description</b>	Anti-FOLR1(farletuzumab biosimilar) mAb
<b>Delivery</b>	In Stock
<b>Storage &amp; Shipping</b>	Store at -20°C to -80°C for 12 months in lyophilized form. After reconstitution, if not intended for use within a month, aliquot and store at -80°C (Avoid repeated freezing and thawing). Lyophilized proteins are shipped at ambient temperature.
<b>Background</b>	Research grade biosimilar. Not for use in therapeutic or diagnostic procedures for humans or animals.
<b>Usage</b>	Research use only
<b>Conjugate</b>	Unconjugated
<b>DIMA Disclaimer</b>	All DIMA recombinant antibodies are genuinely generated by DIMA Biotech. They are all under patent application. Any protein sequencing or reverse engineering attempt is prohibited. We are actively scrutinizing all patent application to ensure no IP infringement.

CONFIDENTIAL



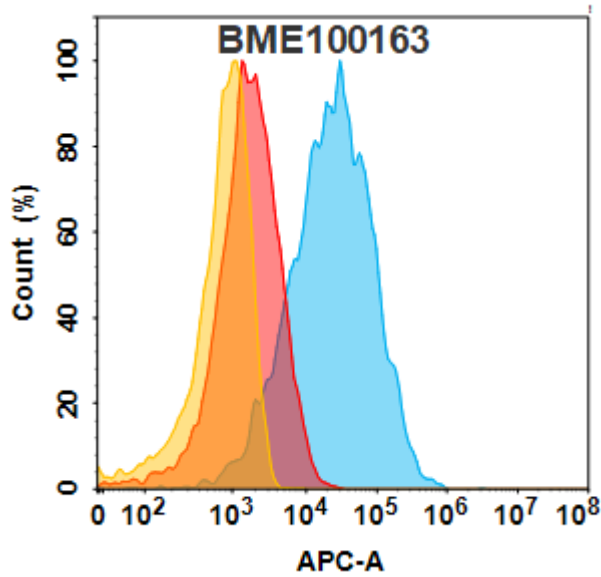


Figure 1. FOLR1 protein is highly expressed on the surface of Expi293 cell membrane. Flow cytometry analysis with 1 $\mu$ g/mL Anti-FOLR1(farletuzumab biosimilar) mAb (BME100163) on Expi293 cells transfected with human FOLR1 (Blue histogram) or Expi293 transfected with irrelevant protein (Red histogram),and Isotype antibody on Expi293 transfected with irrelevant protein (Orange histogram)

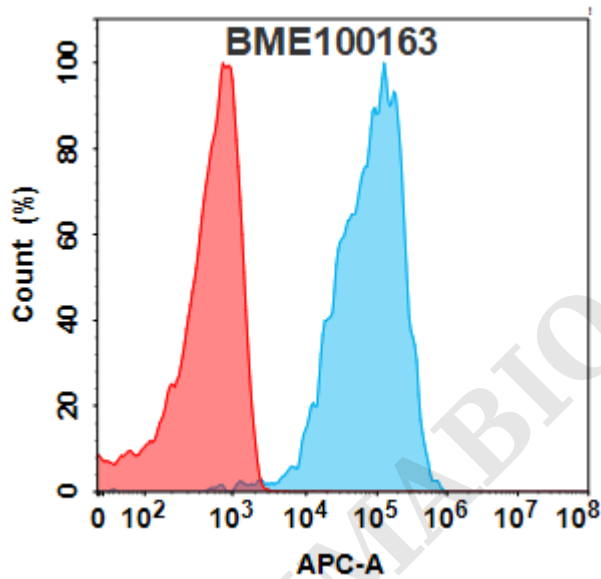


Figure 2. FOLR1 protein is highly expressed on the surface of HeLa cell membrane. Flow cytometry analysis with 1 $\mu$ g/mL Anti-FOLR1(farletuzumab biosimilar) mAb (BME100163) on HeLa cells (Blue histogram) or isotype control mAb (Red histogram) on HeLa cells.



### Anti-FOLR1(farletuzumab biosimilar) mAb ELISA

0.2  $\mu$ g of Human FOLR1, His tagged protein per well

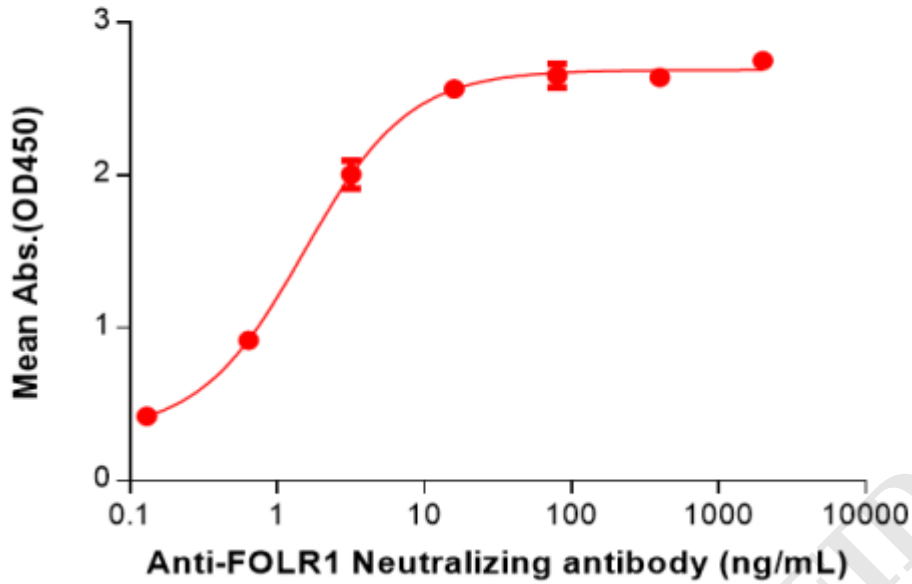


Figure 3. ELISA plate pre-coated by 2  $\mu$ g/mL (100  $\mu$ L/well) Human FOLR1 Protein, His Tag(PME100249) can bind Anti-FOLR1(farletuzumab biosimilar) mAb(BME100163) in a linear range of 0.64-16 ng/mL.

DIMABIO CONFIDENTIAL

