

PRODUCT INFORMATION

| | |
|---|---|
| Clone ID | Warning: Undefined variable \$hasAttributeValueDescription in C:\wwwroot\mirror.dimabio.com\wp-content\plugins\woocommerce-print-products\publicclass-woocommerce-print-products-public.php on line 2806 DMC474 |
| Target | GDF15 |
| Synonyms | GDF-15; MIC-1; MIC1; NAG-1; PDF; PLAB; PTGFB |
| Host Species | Rabbit |
| Description | Anti-GDF15 antibody(DMC474); IgG1 Chimeric mAb |
| Delivery | In Stock |
| Uniprot ID | Q99988 |
| IgG type | Rabbit/Human Fc chimeric IgG1 |
| Clonality | Monoclonal |
| Reactivity | Human |
| Applications | Flow Cyt |
| Recommended Dilutions | Flow Cyt 1:100 |
| Purification | Purified from cell culture supernatant by affinity chromatography |
| Formulation & Reconstitution | Lyophilized from sterile PBS, pH 7.4. Normally 5% - 8% trehalose is added as protectants before lyophilization. Please see Certificate of Analysis for specific instructions of reconstitution. |
| Yefei_Storage | Store at -20°C to -80°C for 12 months in lyophilized form. After reconstitution, if not intended for use within a month, aliquot and store at -80°C (Avoid repeated freezing and thawing). Lyophilized proteins are shipped at ambient temperature. |
| Background | This gene encodes a secreted ligand of the TGF-beta (transforming growth factor-beta) superfamily of proteins. Ligands of this family bind various TGF-beta receptors leading to recruitment and activation of SMAD family transcription factors that regulate gene expression. The encoded preproprotein is proteolytically processed to generate each subunit of the disulfide-linked homodimer. The protein is expressed in a broad range of cell types; acts as a pleiotropic cytokine and is involved in the stress response program of cells after cellular injury. Increased protein levels are associated with disease states such as tissue hypoxia; inflammation; acute injury and oxidative stress. [provided by RefSeq; Aug 2016] |
| Usage | Research use only |
| Conjugate | Unconjugated |
| DIMA Disclaimer | All DIMA recombinant antibodies are genuinely generated by DIMA Biotech. They are all under patent application. Any protein sequencing or reverse engineering attempt is prohibited. We are actively scrutinizing all patent application to ensure no IP infringement. |

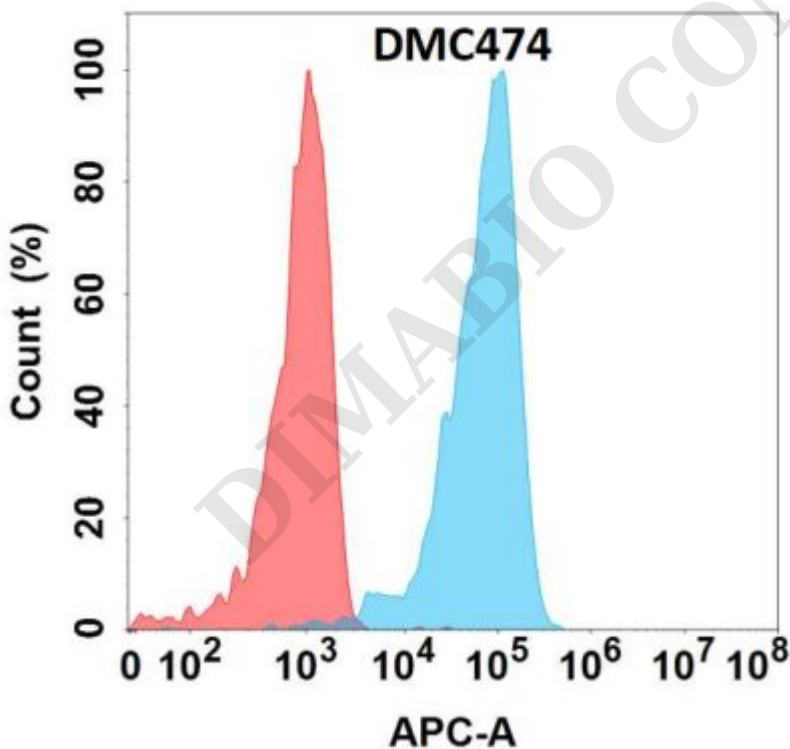


Figure 1. Flow cytometry analysis with Anti-GDF15 (DMC474) on HEK293 cells transfected with human GDF15 (Blue histogram) or HEK293 transfected with irrelevant protein (Red histogram).

