

PRODUCT INFORMATION

Clone ID	Warning: Undefined variable \$hasAttributeValueDescription in C:\wwwroot\mirror.dimabio.com\wp-content\plugins\woocommerce-print-products\publicclass-woocommerce-print-products-public.php on line 2806 GPC1
Target	GPC1
Synonyms	Glypican 1;PC1
Host Species	Rabbit
Description	Anti-GPC1 antibody(1B8); IgG1 Chimeric mAb
Delivery	In Stock
Uniprot ID	P35052
IgG type	Rabbit/Human Fc chimeric IgG1
Clonality	Monoclonal
Reactivity	Human
Applications	Flow Cyt
Recommended Dilutions	Flow Cyt 1/100
Purification	Purified from cell culture supernatant by affinity chromatography
Formulation & Reconstitution	Lyophilized from sterile PBS, pH 7.4. Normally 5% - 8% trehalose is added as protectants before lyophilization. Please see Certificate of Analysis for specific instructions of reconstitution.
Yefel Storage	Store at -20°C to -80°C for 12 months in lyophilized form. After reconstitution, if not intended for use within a month, aliquot and store at -80°C (Avoid repeated freezing and thawing). Lyophilized proteins are shipped at ambient temperature.
Background	Cell surface heparan sulfate proteoglycans are composed of a membrane-associated protein core substituted with a variable number of heparan sulfate chains. Members of the glypican-related integral membrane proteoglycan family (GRIPs) contain a core protein anchored to the cytoplasmic membrane via a glycosyl phosphatidylinositol linkage. These proteins may play a role in the control of cell division and growth regulation. [provided by RefSeq, Jul 2008]
Usage	Research use only
Conjugate	Unconjugated
DIMA Disclaimer	All DIMA recombinant antibodies are genuinely generated by DIMA Biotech. They are all under patent application. Any protein sequencing or reverse engineering attempt is prohibited. We are actively scrutinizing all patent application to ensure no IP infringement.

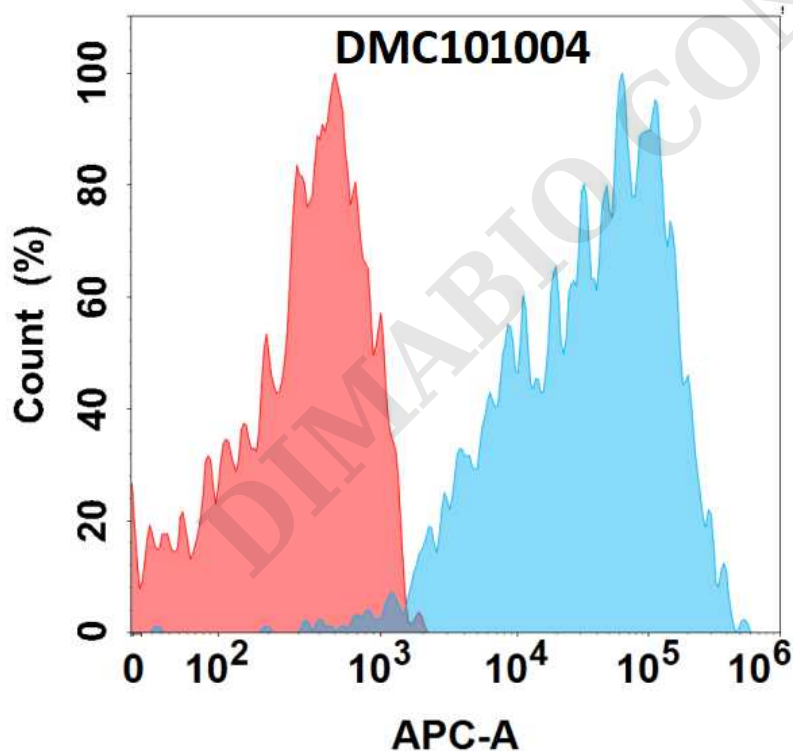


Figure 1. Flow cytometry analysis with Anti-GPC1 (1B8) mAb on HEK293 cells transfected with human GPC1 (Blue histogram) or HEK293 transfected with irrelevant protein (Red histogram).



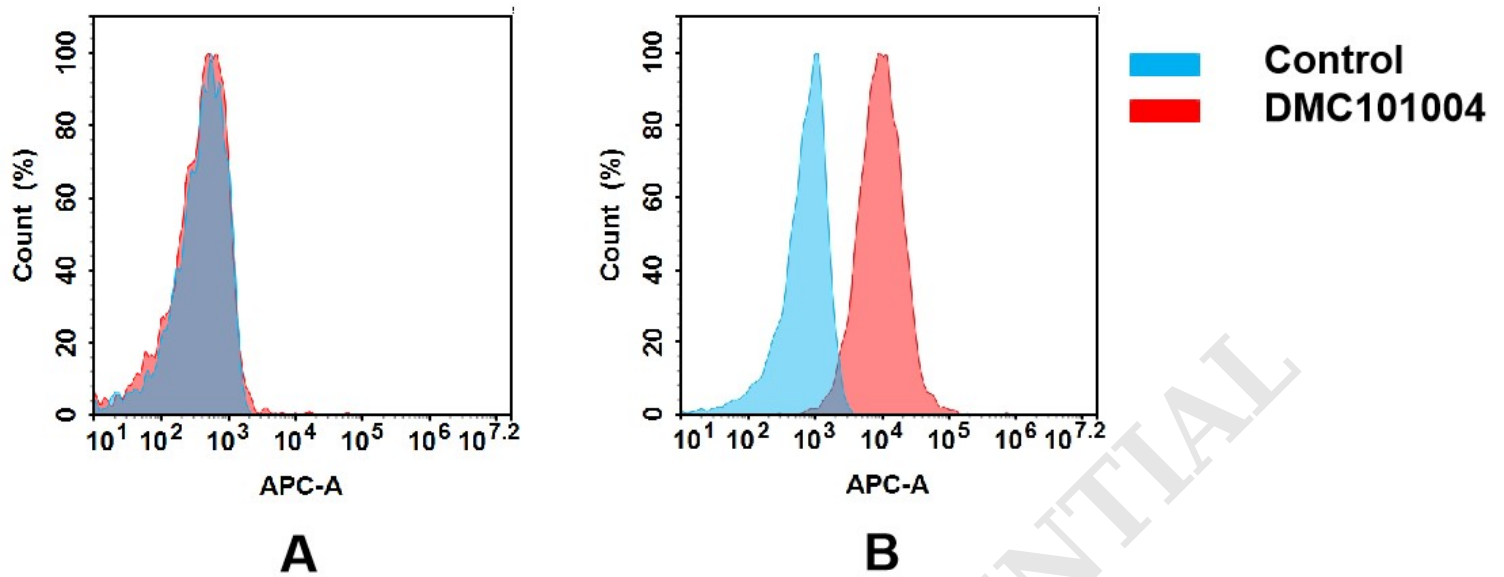


Figure 2. Flow cytometry analysis of antigen binding of anti-human GPC1 mAb(DMC101004).

(A) DMC101004 does not bind to Jurkat cells that do not express GPC1.

(B) A clear peak shift of DMC101004 was seen compared to the control when incubated with GPC1-expressing 8226 cells, indicating strong binding of DMC101004 to GPC1. Antibodies were incubated at 10 µg/mL.

DIMABIO CONFIDENTIAL

