

**PRODUCT INFORMATION**

<b>Common Name</b>	LBL-034
<b>Synonyms</b>	GPRC5D; CD3
<b>Applications</b>	ELISA, Flow Cyt
<b>Recommended Dilutions</b>	ELISA 1:5000-10000, Flow Cyt 1:100
<b>Formulation &amp; Reconstitution</b>	Lyophilized from sterile PBS, pH 7.4. Normally 5% - 8% trehalose is added as protectants before lyophilization. Please see Certificate of Analysis for specific instructions of reconstitution.
<b>Host Species</b>	Humanized
<b>IgG type</b>	IgG1
<b>Reactivity</b>	Human
<b>Target</b>	GPRC5D and CD3
<b>Uniprot ID</b>	Q9NZD1 and P07766
<b>Description</b>	Anti-GPRC5D and CD3(LBL-034 biosimilar) BsAb
<b>Delivery</b>	In Stock
<b>Storage &amp; Shipping</b>	Store at -20°C to -80°C for 12 months in lyophilized form. After reconstitution, if not intended for use within a month, aliquot and store at -80°C (Avoid repeated freezing and thawing). Lyophilized antibodies are shipped at ambient temperature.
<b>Background</b>	Research grade biosimilar. Not for use in therapeutic or diagnostic procedures for humans or animals.
<b>Usage</b>	Research use only
<b>Conjugate</b>	Unconjugated
<b>DIMA Disclaimer</b>	All DIMA recombinant antibodies are genuinely generated by DIMA Biotech. They are all under patent application. Any protein sequencing or reverse engineering attempt is prohibited. We are actively scrutinizing all patent application to ensure no IP infringement.



## Anti-GPRC5D and CD3(LBL-034 biosimilar) BsAb ELISA

0.2  $\mu$ g of Human GPRC5D, mFc tagged protein per well

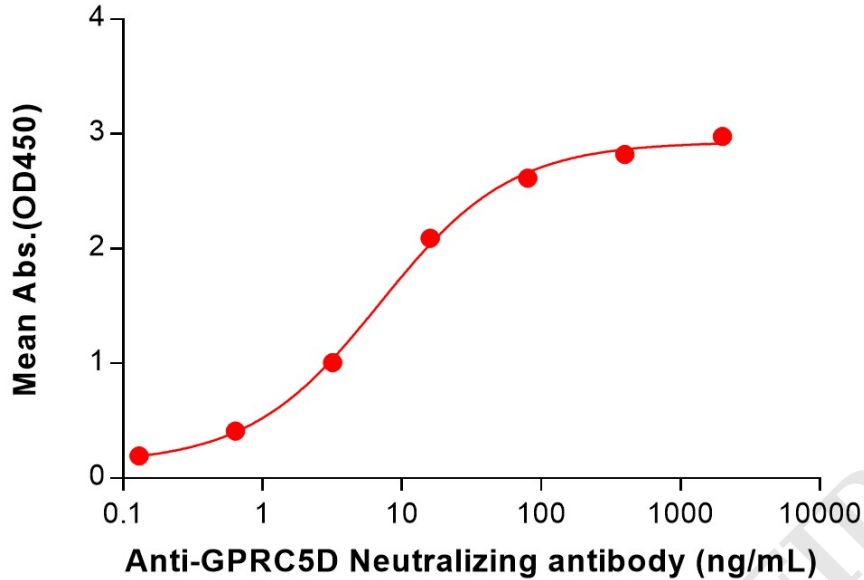


Figure 1. ELISA plate pre-coated by 2  $\mu$ g/mL (100  $\mu$ L/well) Human GPRC5D Protein, mFc Tag (PME100559) can bind Anti-GPRC5D and CD3(LBL-034 biosimilar) BsAb (BME100196) in a linear range of 0.64-80 ng/mL.

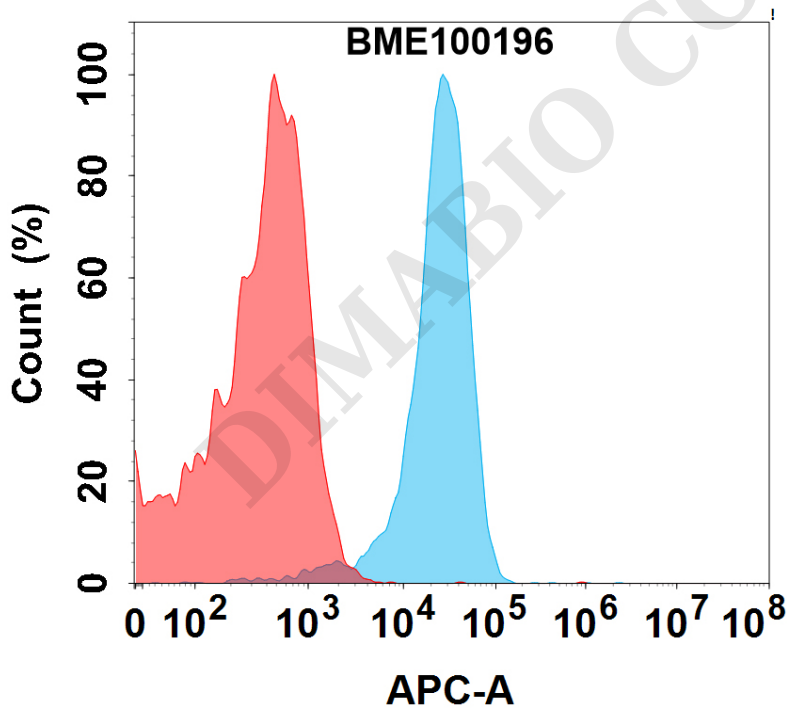


Figure 2. Flow cytometry analysis with 1 $\mu$ g/mL Anti-GPRC5D and CD3(LBL-034 biosimilar) BsAb (BME100196) on K562-GPRC5D cells (Blue histogram) or isotype control bsAb on K562 cells (Red histogram).

