

**PRODUCT INFORMATION**

<b>Common Name</b>	LBL-034
<b>Synonyms</b>	GPRC5D
<b>Applications</b>	ELISA, Flow Cyt
<b>Recommended Dilutions</b>	ELISA 1:5000-10000, Flow Cyt 1:100
<b>Formulation &amp; Reconstitution</b>	Lyophilized from sterile PBS, pH 7.4. Normally 5% - 8% trehalose is added as protectants before lyophilization. Please see Certificate of Analysis for specific instructions of reconstitution.
<b>Host Species</b>	Humanized
<b>IgG type</b>	IgG1(L117A, L118A, D148A, P212A, Y232C, E239D, M241L, T249S, L251A, Y290V )
<b>Reactivity</b>	Human
<b>Target</b>	GPRC5D
<b>Uniprot ID</b>	Q9NZD1
<b>Description</b>	Anti-GPRC5D(LBL-034 biosimilar) mAb
<b>Delivery</b>	In Stock
<b>Storage &amp; Shipping</b>	Store at -20°C to -80°C for 12 months in lyophilized form. After reconstitution, if not intended for use within a month, aliquot and store at -80°C (Avoid repeated freezing and thawing). Lyophilized antibodies are shipped at ambient temperature.
<b>Background</b>	Research grade biosimilar. Not for use in therapeutic or diagnostic procedures for humans or animals.
<b>Usage</b>	Research use only
<b>Conjugate</b>	Unconjugated
<b>DIMA Disclaimer</b>	All DIMA recombinant antibodies are genuinely generated by DIMA Biotech. They are all under patent application. Any protein sequencing or reverse engineering attempt is prohibited. We are actively scrutinizing all patent application to ensure no IP infringement.



## Anti-GPRC5D(LBL-034 biosimilar) mAb ELISA

0.2  $\mu$ g of Human GPRC5D, mFc tagged protein per well

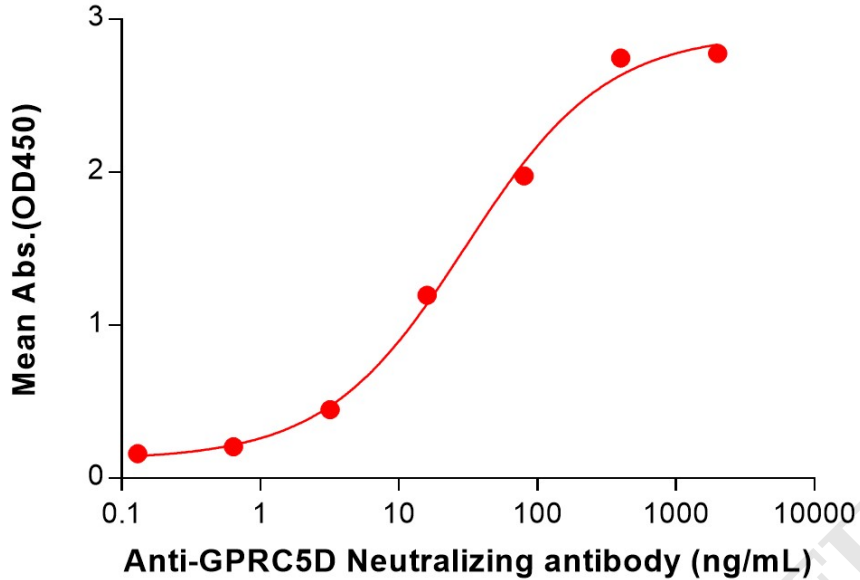


Figure 1. ELISA plate pre-coated by 2  $\mu$ g/mL (100  $\mu$ L/well) Human GPRC5D Protein, mFc Tag (PME100559) can bind Anti-GPRC5D(LBL-034 bisosimilar) mAb (BME100193) in a linear range of 3.20-400 ng/mL.

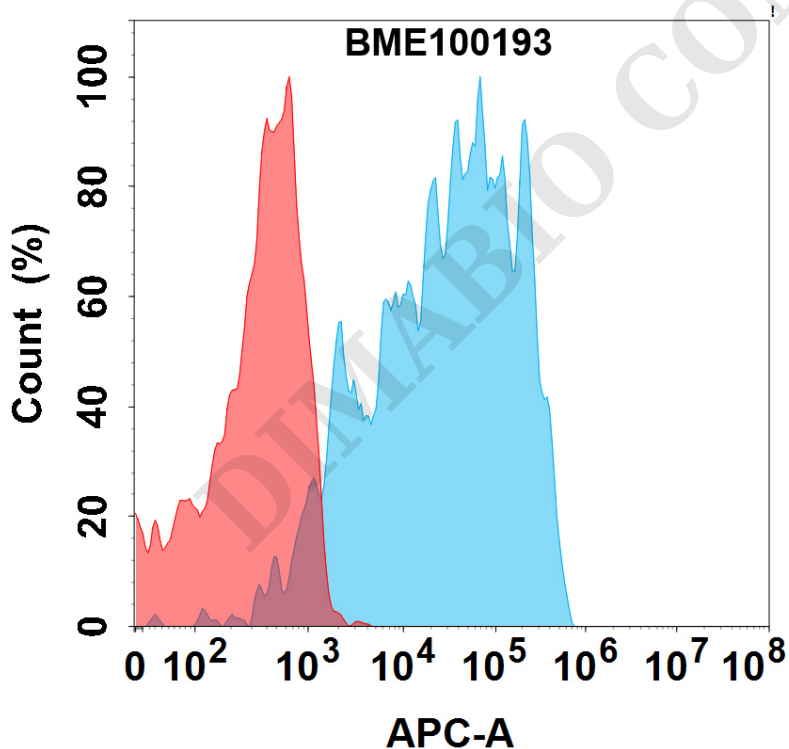


Figure 2. Flow cytometry analysis with 1 $\mu$ g/mL Anti-GPRC5D(LBL-034 bisosimilar) mAb (BME100193) on Expi293 cells transfected with Human GPRC5D protein (Blue histogram) or Expi293 transfected with irrelevant protein (Red histogram).

