

PRODUCT INFORMATION

Common Name	Warning: Undefined variable \$hasAttributeValueDescription in C:\wwwroot\mirror\dimabio.com\wp-content\plugins\woocommerce-print-products\public\class-woocommerce-print-products-public.php on line 2806 AMG888_U3-1287
Conjugate	Unconjugated
Synonyms	HER3;ERBB3
Applications	ELISA; Flow Cyt
Recommended Dilutions	ELISA 1:5000-10000; Flow Cyt 1:100
Formulation & Reconstitution	Lyophilized from sterile PBS, pH 7.4. Normally 5 % - 8% trehalose is added as protectants before lyophilization. Please see Certificate of Analysis for specific instructions of reconstitution.
Host Species	Homo sapiens
IgG type	Human IgG1 - kappa
Reactivity	Human
Target	HER3
Uniprot ID	P21860
Description	Anti-HER3 (patritumab biosimilar)mAb
Delivery	In Stock
Yefei Storage	Store at -20°C to -80°C for 12 months in lyophilized form. After reconstitution, if not intended for use within a month, aliquot and store at -80°C (Avoid repeated freezing and thawing). Lyophilized proteins are shipped at ambient temperature.
Background	Research grade biosimilar. Not for use in therapeutic or diagnostic procedures for humans or animals.
Usage	Research use only

Anti-HER3 (patritumab biosimilar)mAb ELISA

0.2 µg of HER3, His tagged protein per well

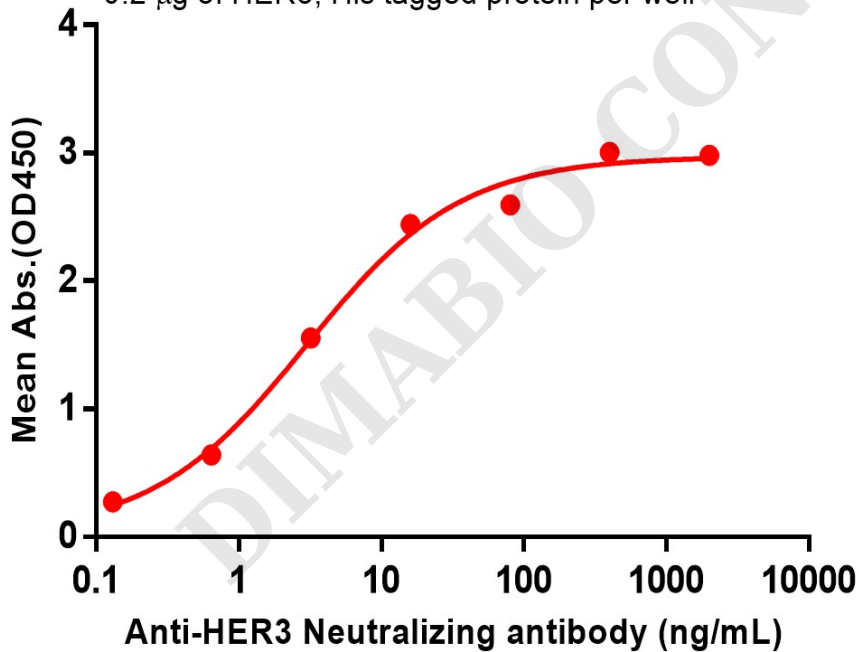


Figure 1. ELISA plate pre-coated by 2 µg/ml (100 µL/well) Human HER3 , His tagged protein (PME100088) can bind Anti-HER3 (patritumab biosimilar)mAb (BME100057) in a linear range of 3.2-16 ng/ml.



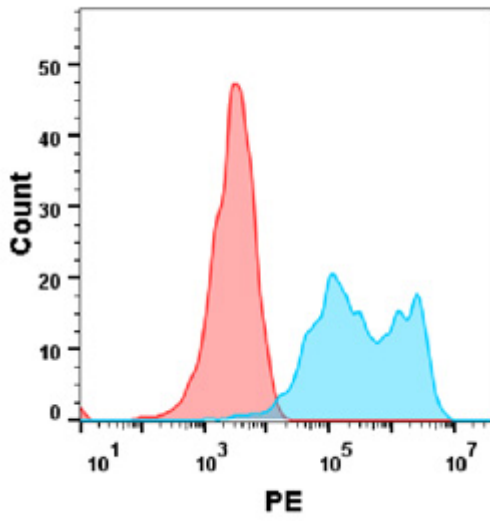


Figure 2. Flow cytometry analysis with Anti-HER3 mAb 1 μ g/ml (patritumab) on HEK293 cells transfected with human HER3 (Blue histogram) or HEK293 transfected with irrelevant protein (Red histogram).

DIMABIO CONFIDENTIAL

