

PRODUCT INFORMATION

Common Name	Warning: Undefined variable \$hasAttributeValueDescription in C:\wwwroot\mirror.dimabio.com\wp-content\plugins\woocommerce-print-products\publicclass-woocommerce-print-products-public.php on line 2806
Synonyms	Warning: Undefined variable \$hasAttributeValueDescription in C:\wwwroot\mirror.dimabio.com\wp-content\plugins\woocommerce-print-products\publicclass-woocommerce-print-products-public.php on line 2806 ICAM1.BB2.CD54.P3.58
Conjugate	Unconjugated
Applications	ELISA; Flow Cyt
Recommended Dilutions	ELISA 1:5000-10000; Flow Cyt 1:100
Formulation & Reconstitution	Lyophilized from sterile PBS, pH 7.4. Normally 5% - 8% trehalose is added as protectants before lyophilization. Please see Certificate of Analysis for specific instructions of reconstitution.
Host Species	Homo sapiens
IgG type	Human IgG1 - Lambda2
Reactivity	Human
Target	ICAM-1
Uniprot ID	P05362
Description	Anti-ICAM-1 (bersanlimab biosimilar) mAb
Delivery	In Stock
Yefei_Storage	Store at -20°C to -80°C for 12 months in lyophilized form. After reconstitution, if not intended for use within a month, aliquot and store at -80°C (Avoid repeated freezing and thawing). Lyophilized proteins are shipped at ambient temperature.
Background	Research grade biosimilar. Not for use in therapeutic or diagnostic procedures for humans or animals.
Usage	Research use only

Anti-ICAM-1 (bersanlimab biosimilar) mAb ELISA

0.2 µg of Human ICAM-1, mFc tagged protein per well

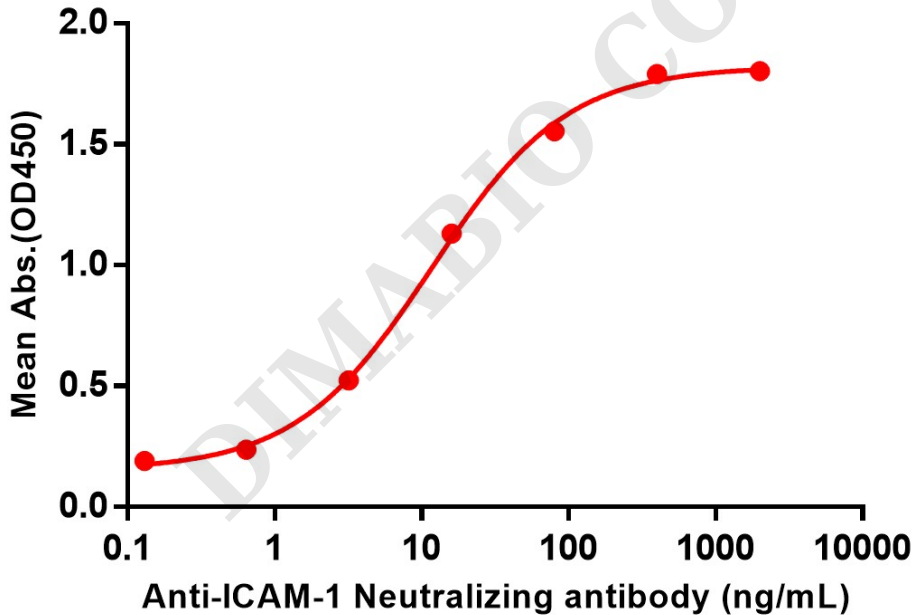


Figure 1. ELISA plate pre-coated by 2 µg/ml (100 µL/well) Human ICAM-1, mFc tagged protein (PME100062) can bind Anti-ICAM-1 Neutralizing antibody (BME100036) in a linear range of 0.64-80 ng/ml.



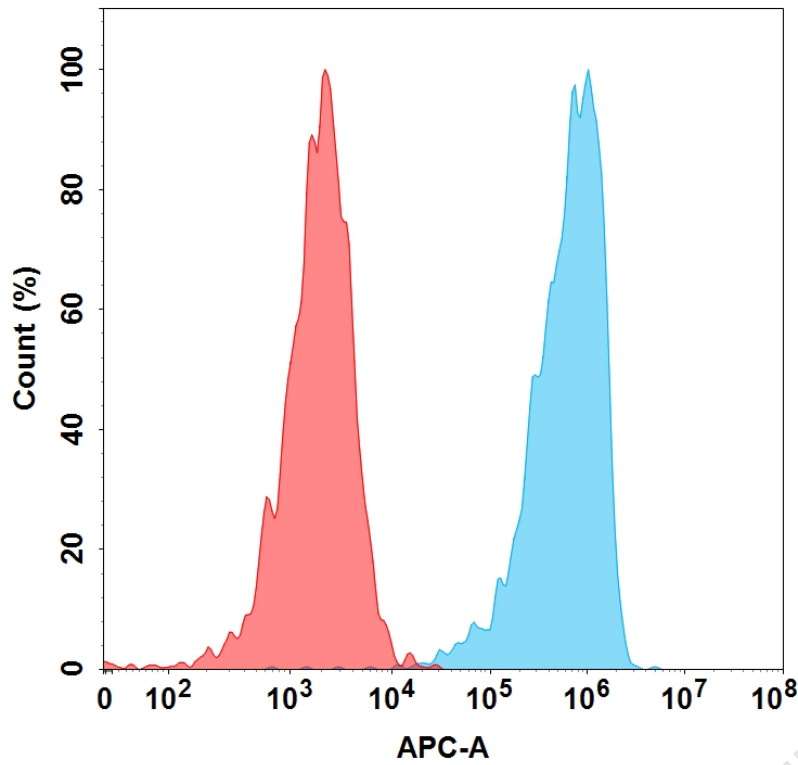


Figure 2. Flow cytometry analysis with 1 μ g/mL Anti-ICAM-1 (bersanlimab biosimilar) mAb (BME100036) on HEK293 cells transfected with Human ICAM-1 protein (Blue histogram) or HEK293 transfected with irrelevant protein (Red histogram).

DIMABIO CONFIDENTIAL

