

PRODUCT INFORMATION

Common Name	CAN-04, CAN04
Synonyms	IL1AP; C3orf13; IL1R3; IL-1R-3; IL-1R3
Applications	ELISA, Flow Cyt
Recommended Dilutions	ELISA 1:5000-10000, Flow Cyt 1:100
Formulation & Reconstitution	Lyophilized from sterile PBS, pH 7.4. Normally 5% - 8% trehalose is added as protectants before lyophilization. Please see Certificate of Analysis for specific instructions of reconstitution.
Host Species	Humanized
IgG type	IgG1
Reactivity	Human
Target	IL1RAP
Uniprot ID	Q9NPH3
Description	Anti-IL1RAP(nadunolimab biosimilar) mAb
Delivery	In Stock
Storage & Shipping	Store at -20°C to -80°C for 12 months in lyophilized form. After reconstitution, if not intended for use within a month, aliquot and store at -80°C (Avoid repeated freezing and thawing). Lyophilized antibodies are shipped at ambient temperature.
Background	Research grade biosimilar. Not for use in therapeutic or diagnostic procedures for humans or animals.
Usage	Research use only
Conjugate	Unconjugated
DIMA Disclaimer	All DIMA recombinant antibodies are genuinely generated by DIMA Biotech. They are all under patent application. Any protein sequencing or reverse engineering attempt is prohibited. We are actively scrutinizing all patent application to ensure no IP infringement.



Anti-IL1RAP(nadunolimab biosimilar) mAb ELISA

0.2 μ g of Human IL1RAP, His tagged protein per well

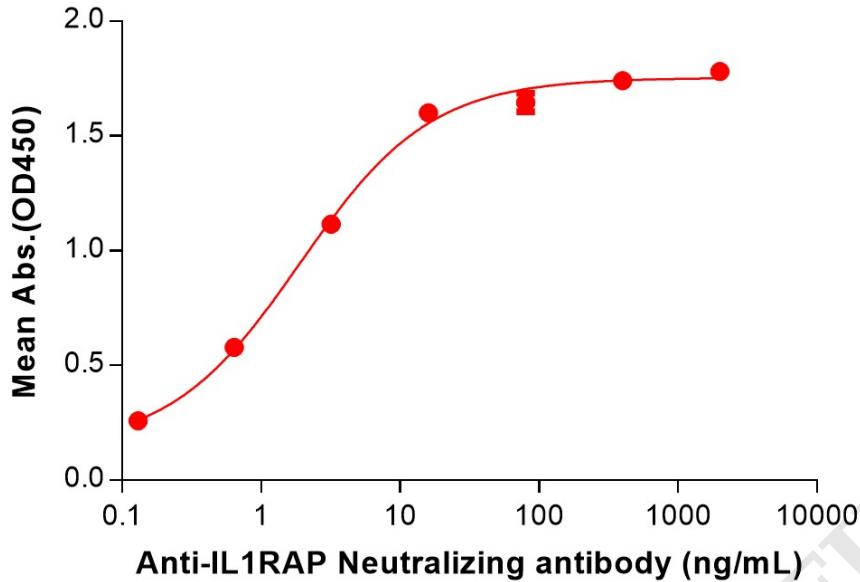


Figure 1. ELISA plate pre-coated by 2 μ g/mL (100 μ L/well) Human IL1RAP Protein, His Tag (PME100746) can bind Anti-IL1RAP(nadunolimab biosimilar) mAb (BME100241) in a linear range of 0.13-16 ng/mL.

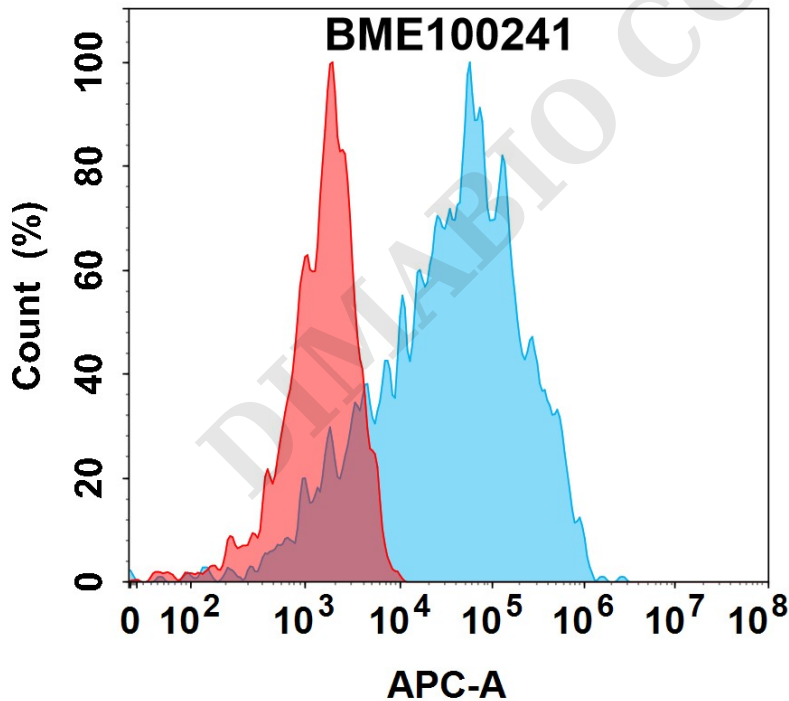


Figure 2. Flow cytometry analysis with 15 μ g/mL Anti-IL1RAP(nadunolimab biosimilar) mAb (BME100241) on Expi293 cells transfected with Human IL1RAP and IL1RA protein (Blue histogram) or Expi293 transfected with Human IL1RA protein (Red histogram).

