

PRODUCT INFORMATION

Common Name	Warning: Undefined variable \$hasAttribute&valueDescription in C:\wwwroot\mirror\dimabio.com\wp-content\plugins\woocommerce-print-products\public\class-woocommerce-print-products-public.php on line 2806 BI-655130, BI655130, BI 655130, spesolimab-sbzo
Conjugate	Unconjugated
Synonyms	ILRL2; IL-36R; IL1RRP2; IL-36R
Applications	ELISA, Flow Cyt
Recommended Dilutions	ELISA 1:5000-10000, Flow Cyt 1:100
Formulation & Reconstitution	Lyophilized from sterile PBS, pH 7.4. Normally 5 % - 8% trehalose is added as protectants before lyophilization. Please see Certificate of Analysis for specific instructions of reconstitution.
Host Species	Chimeric Humanized
IgG type	Human IgG1(K214R, L234A, L235A) - Kappa
Reactivity	Human
Target	IL1RL2
Uniprot ID	Q9HB29
Description	Anti-IL1RL2(spesolimab biosimilar) mAb
Delivery	In Stock
Yefei Storage	Store at -20°C to -80°C for 12 months in lyophilized form. After reconstitution, if not intended for use within a month, aliquot and store at -80°C (Avoid repeated freezing and thawing). Lyophilized antibodies are shipped at ambient temperature.
Background	Research grade biosimilar. Not for use in therapeutic or diagnostic procedures for humans or animals.
Usage	Research use only

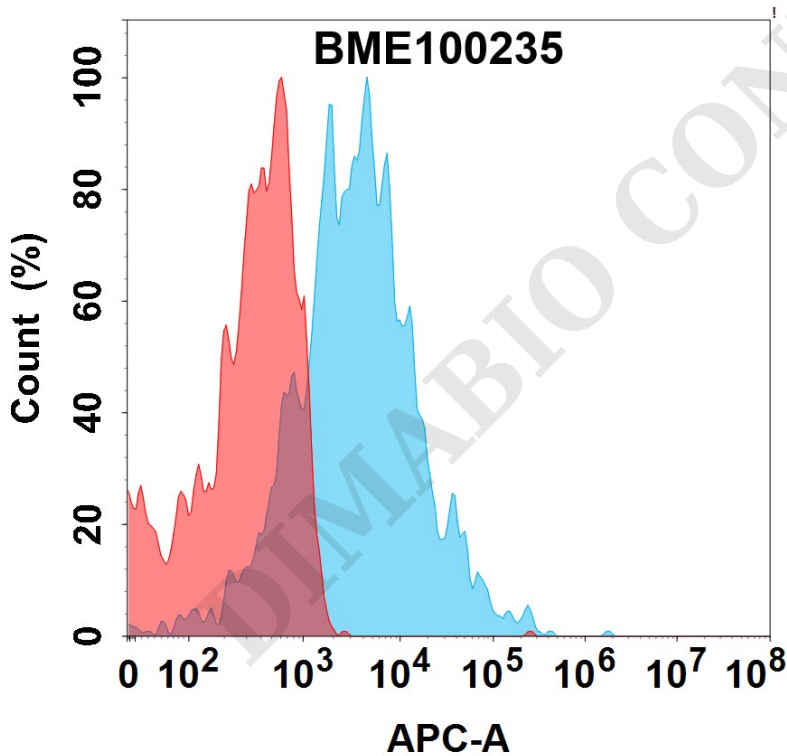


Figure 1. Flow cytometry analysis with 1µg/mL Anti-IL1RL2(spesolimab biosimilar) mAb (BME100235) on HEK293 cells transfected with Human IL1RL2 protein (Blue histogram) or HEK293 transfected with irrelevant protein (Red histogram).



Anti-IL1RL2(spesolimab biosimilar) mAb ELISA

0.2 μ g of Human IL1RL2, His tagged protein per well

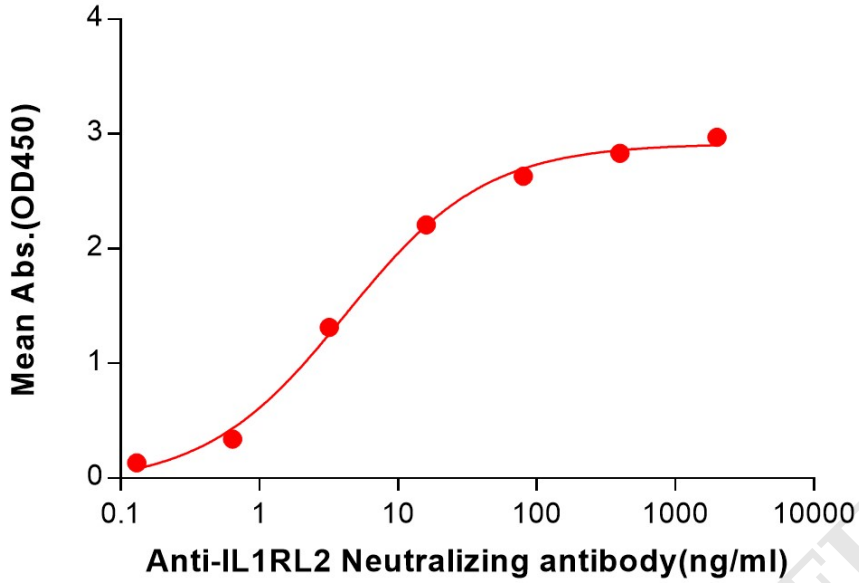


Figure 2. ELISA plate pre-coated by 2 μ g/mL (100 μ L/well) Human IL1RL2 Protein, His Tag (PME101318) can bind Anti-IL1RL2(spesolimab biosimilar) mAb (BME100235) in a linear range of 0.64-80 ng/mL.

