

PRODUCT INFORMATION

Common Name	Warning: Undefined variable \$hasAttribute\$ in C:\wwwroot\mirror\dimabio.com\wp-content\plugins\woocommerce-print-products\public\class-woocommerce-print-products-public.php on line 2806 ADX-914
Conjugate	Unconjugated
Synonyms	IL7R, CD127, CDw127
Applications	ELISA, Flow Cyt
Recommended Dilutions	ELISA 1:5000-10000, Flow Cyt 1:100
Formulation & Reconstitution	Lyophilized from sterile PBS, pH 7.4. Normally 5% - 8% trehalose is added as protectants before lyophilization. Please see Certificate of Analysis for specific instructions of reconstitution.
Host Species	Homo sapiens
IgG type	Human IgG1(K214R,L234A,L235E,G237A) - kappa
Reactivity	Human
Target	IL7RA
Uniprot ID	P16871
Description	Anti-IL7RA(bempikibart biosimilar) mAb
Delivery	In Stock
Yefei Storage	Store at -20°C to -80°C for 12 months in lyophilized form. After reconstitution, if not intended for use within a month, aliquot and store at -80°C (Avoid repeated freezing and thawing). Lyophilized antibodies are shipped at ambient temperature.
Background	Research grade biosimilar. Not for use in therapeutic or diagnostic procedures for humans or animals.
Usage	Research use only

Anti-IL7RA(bempikibart biosimilar) mAb ELISA

0.2 μ g of Human IL7RA, hFc tagged protein per well

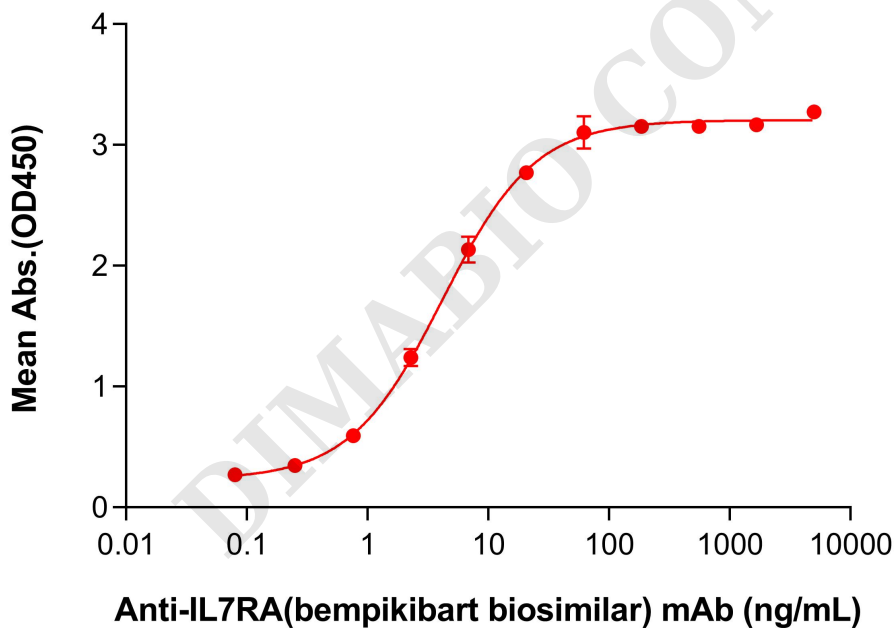


Figure 1. ELISA plate pre-coated by 2 μ g/mL (100 μ L/well) Human IL7RA Protein, hFc Tag (PME100840) can bind Anti-IL7RA(bempikibart biosimilar) mAb (BME100428) in a linear range of 0.76–20.58 ng/mL.



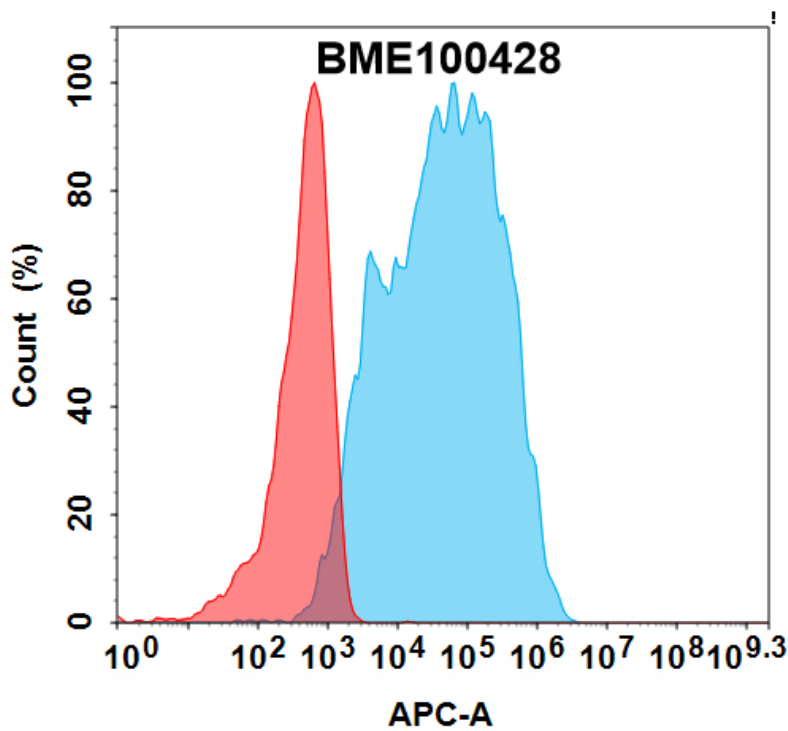


Figure 2. Flow cytometry analysis with 1 μ g/mL Anti-IL7RA(bempikibart biosimilar) mAb (BME100428) on HEK293 cells transfected with Human CRLF2 and IL7RA protein (Blue histogram) or HEK293 transfected with CRLF2 protein (Red histogram).

DIMABIO CONFIDENTIAL

