

PRODUCT INFORMATION

Common Name	LAG-3,CD223
Synonyms	BMS-986016;ONO-4482
Applications	ELISA; Flow Cyt
Recommended Dilutions	ELISA 1:5000-10000; Flow Cyt 1:100
Formulation & Reconstitution	Lyophilized from sterile PBS, pH 7.4. Normally 5% - 8% trehalose is added as protectants before lyophilization. Please see Certificate of Analysis for specific instructions of reconstitution.
Host Species	Homo sapiens
IgG type	IgG4
Reactivity	Human
Target	LAG3
Uniprot ID	P18627
Description	Anti-LAG3 (relatlimab biosimilar)mAb
Delivery	In Stock
Storage & Shipping	Store at -20°C to -80°C for 12 months in lyophilized form. After reconstitution, if not intended for use within a month, aliquot and store at -80°C (Avoid repeated freezing and thawing). Lyophilized proteins are shipped at ambient temperature.
Background	Research grade biosimilar. Not for use in therapeutic or diagnostic procedures for humans or animals.
Usage	Research use only
Conjugate	Unconjugated
DIMA Disclaimer	All DIMA recombinant antibodies are genuinely generated by DIMA Biotech. They are all under patent application. Any protein sequencing or reverse engineering attempt is prohibited. We are actively scrutinizing all patent application to ensure no IP infringement.



Anti-LAG3 (relatlimab biosimilar) mAb ELISA

0.1 μ g of Human LAG3, His Tagged protein per well

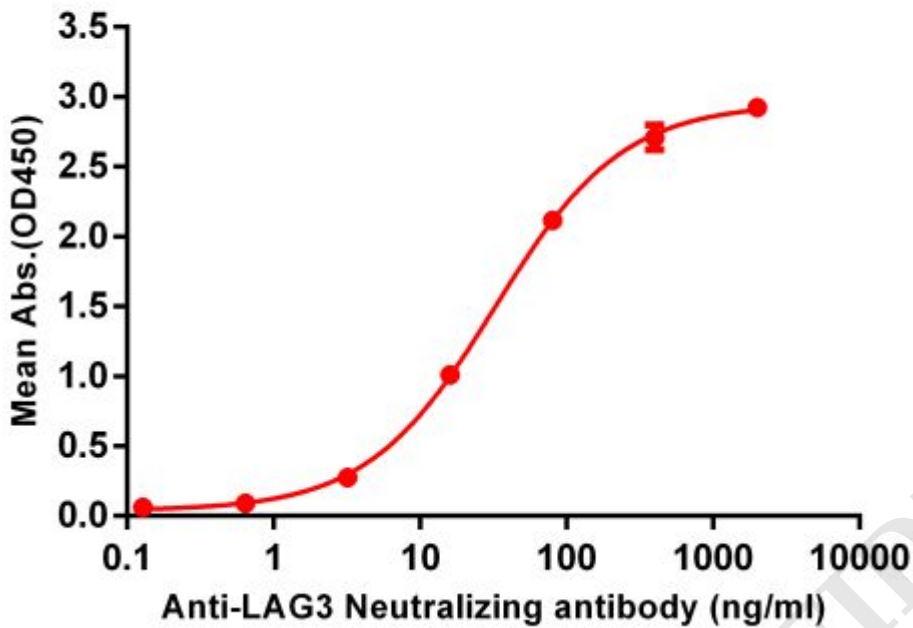


Figure 1. ELISA plate pre-coated by 1 μ g/ml (100 μ l/well) Human LAG3, His tagged protein ([getskuurl sku="PME100512"]) can bind Anti-LAG3 Neutralizing antibody (BME100062) in a linear range of 0.6-100ng/ml.

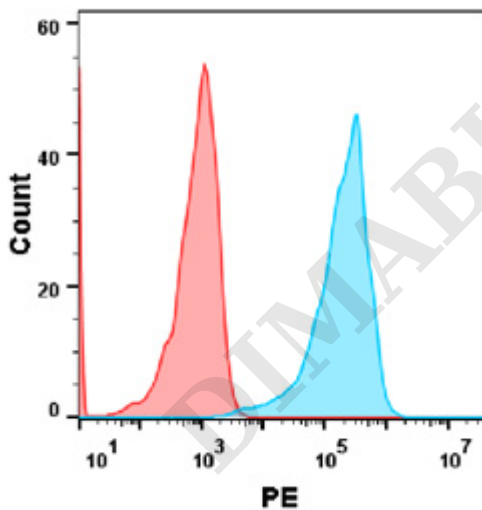


Figure 2. Flow cytometry analysis with Anti-LAG3 mAb 1 μ g/ml (relatlimab) on Expi293 cells transfected with human LAG3 (Blue histogram) or Expi293 transfected with irrelevant protein (Red histogram).

