

PRODUCT INFORMATION

Common Name	Warning: Undefined variable \$hasAttribute\$ in C:\wwwroot\mirror\dimabio.com\wp-content\plugins\woocommerce-print-products\public\class-woocommerce-print-products-public.php on line 2806 CERC-002, MDCN-002, SAR-252067, F-19, AEVI-002
Conjugate	Unconjugated
Synonyms	TNFSF14, HVEML, UNQ391/PRO726
Applications	ELISA, Flow Cyt
Recommended Dilutions	ELISA 1:5000-10000, Flow Cyt 1:100
Formulation & Reconstitution	Lyophilized from sterile PBS, pH 7.4. Normally 5 % - 8% trehalose is added as protectants before lyophilization. Please see Certificate of Analysis for specific instructions of reconstitution.
Host Species	Homo sapiens
IgG type	Human IgG4(L235E) - kappa
Reactivity	Human
Target	LIGHT
Uniprot ID	O43557
Description	Anti-LIGHT(quisovalimab biosimilar) mAb
Delivery	In Stock
Yefei Storage	Store at -20°C to -80°C for 12 months in lyophilized form. After reconstitution, if not intended for use within a month, aliquot and store at -80°C (Avoid repeated freezing and thawing). Lyophilized antibodies are shipped at ambient temperature.
Background	Research grade biosimilar. Not for use in therapeutic or diagnostic procedures for humans or animals.
Usage	Research use only

Anti-LIGHT(quisovalimab biosimilar) mAb ELISA

0.2 µg of Human LIGHT, hFc tagged protein per well

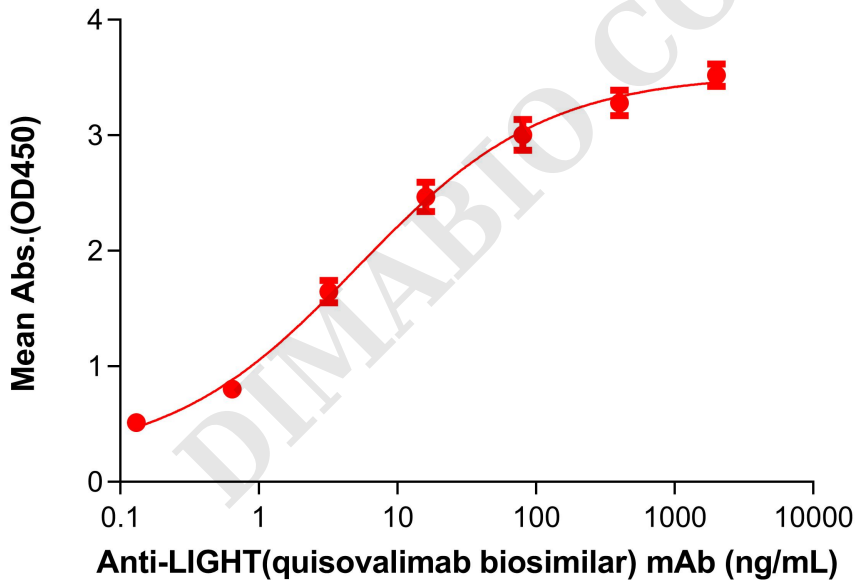


Figure 1. ELISA plate pre-coated by 2 µg/mL (100 µL/well) Human LIGHT Protein, hFc Tag(PME100049) can bind Anti-LIGHT(quisovalimab biosimilar) mAb (BME100274) in a linear range of 0.64-80 ng/mL.



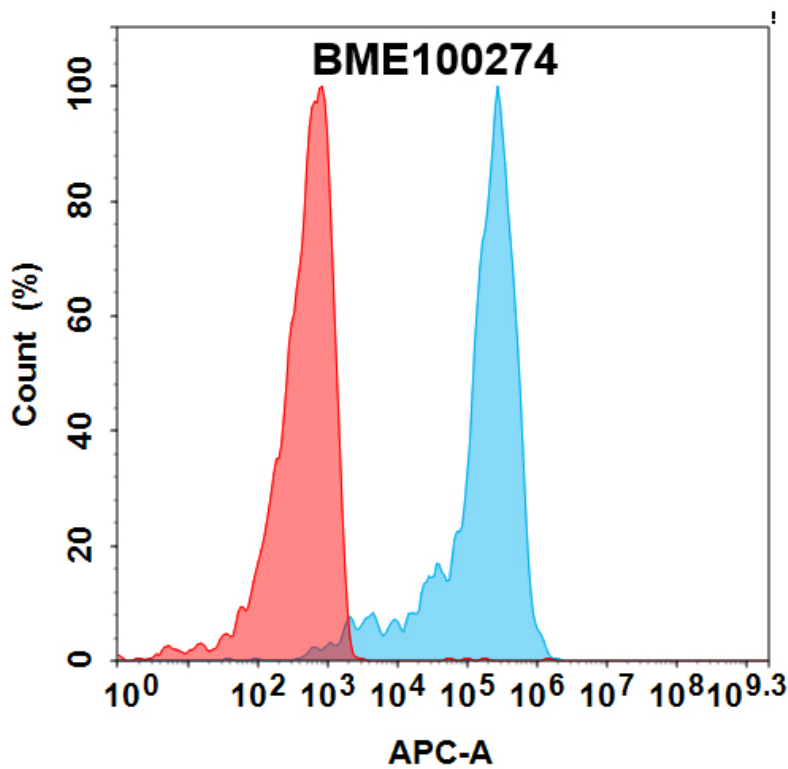


Figure 2. Flow cytometry analysis with 1 μ g/mL Anti-LIGHT(quisovalimab biosimilar) mAb (BME100274) on HEK293 cells transfected with Human LIGHT protein (Blue histogram) or HEK293 transfected with irrelevant protein (Red histogram).

