

PRODUCT INFORMATION

Common Name	Warning: Undefined variable \$hasAttributeValueDescription in C:\wwwroot\mirror\dimabio.com\wp-content\plugins\woocommerce-print-products\publicclass-woocommerce-print-products-public.php on line 2806 MK-4830
Conjugate	Unconjugated
Synonyms	LIR-2;ILT-4;MIR-10;CD85d
Applications	ELISA; Flow Cyt
Recommended Dilutions	ELISA 1:5000-10000; Flow Cyt 1:100
Formulation & Reconstitution	Lyophilized from sterile PBS, pH 7.4. Normally 5% - 8% trehalose is added as protectants before lyophilization. Please see Certificate of Analysis for specific instructions of reconstitution.
Host Species	Humanized
IgG type	Human IgG4 - Lambda1
Reactivity	Human
Target	LILRB2
Uniprot ID	Q8N423
Description	Anti-LILRB2 (MK-4830) mAb
Delivery	In Stock
Yefei Storage	Store at -20°C to -80°C for 12 months in lyophilized form. After reconstitution, if not intended for use within a month, aliquot and store at -80°C (Avoid repeated freezing and thawing). Lyophilized proteins are shipped at ambient temperature.
Background	Research grade biosimilar. Not for use in therapeutic or diagnostic procedures for humans or animals.
Usage	Research use only

Anti-LILRB2 (MK-4830) mAb ELISA

0.2 µg of Human LILRB2, His tagged protein per well

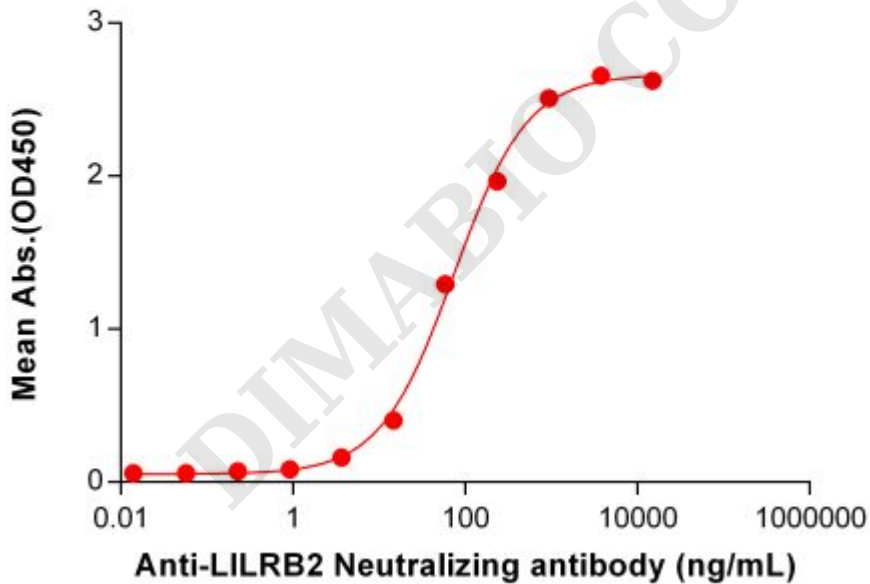


Figure 1. ELISA plate pre-coated by 2 µg/mL (100 µL/well) Human LILRB2 Protein, His Tag ([getskuurl sku="PME100745"]) can bind Anti-LILRB2 Neutralizing antibody (BME100145) in a linear range of 3.66–937.50 ng/mL.



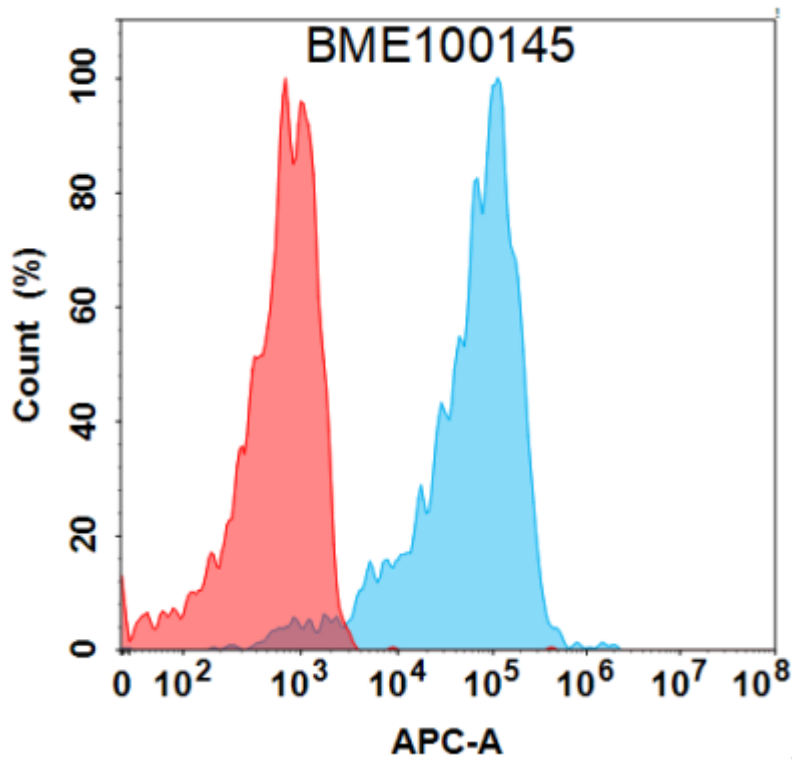


Figure 2. Flow cytometry analysis with 1 $\mu\text{g}/\text{mL}$ Anti-LILRB2 (MK-4830) mAb (BME100145) on HEK293 cells transfected with Human LILRB2 protein (Blue histogram) or HEK293 transfected with irrelevant protein (Red histogram).

DIMABIO CONFIDENTIAL

